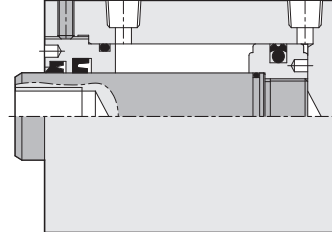
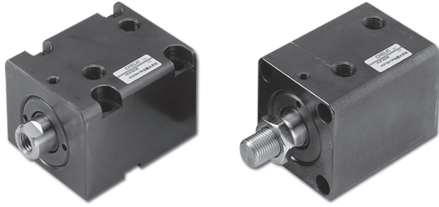


# HC series Compact Hydraulic Cylinder

Product features/ Code of order

CHELIC

## Internal structure



SCR(L)

HER

HGR(L)

HSR(L)

HBR(L)

HFR(L)

HFK

HCK

HLK

HUR(L)

HUK

HN

HS

HCF

HCS

HCQ

## Specification

Item	Bore size (mm)	Ø20	Ø25	Ø32	Ø40	Ø50	Ø63	Ø80	
Stroke range	mm	40	50	60	80	90	100		
Action	Double acting								
Fluid	Clean oil ( ISO - VG68 )								
Mounting type	Front mounting (HCF), Side mounting (HCS)								
Pressure range	kgf/cm <sup>2</sup> (kPa)	2 ~ 140 ( 200 ~ 14000 )							
Ambient and fluid temperature	°C	-10 ~ 60							
Material	Carbon steel								

## Code of order

**HCF** × **50** × **30** - **B** - **Z**

**Model**      **Bore size**      **Stroke**      **End rod type**      **Adjustabl**

**HCF:**  
Front mounting

**HCS:**  
Side mounting

20 - Ø20 mm  
25 - Ø25 mm  
32 - Ø32 mm  
40 - Ø40 mm  
50 - Ø50 mm  
63 - Ø63 mm  
80 - Ø80 mm

Ø20-5~40 mm  
Ø25-5~50 mm  
Ø32-5~60 mm  
Ø40-5~80 mm  
Ø50-5~90 mm  
Ø63-5~100 mm  
Ø80-5~100 mm

None:  
Female thread

**B:**  
Male thread

**D:** Double female thread type

**BD:** Double male thread

**GL:** Left male thread

**GR:** Right male thread

None: Standard  
Z: Adjust 25 mm  
L: Adjust 50 mm  
\* Only GL, GR type

■ Specification: Ø20~Ø63

# HC series Compact Hydraulic Cylinder

## Product weight

CHELIC

### Product weight

Unit: kg

Bore	Ø20		Ø25		Ø32				Ø40				Ø50				Ø63				Ø80	
	HCF		HCF		HCF		HCS		HCF		HCS		HCF		HCS		HCF		HCS		HCF	
		B		B		B		B		B		B		B		B		B		B		B
5	0.64	0.69	0.88	0.93	1.61	1.71	1.72	1.82	2.00	2.20	2.21	2.41	2.78	3.03	3.27	3.52	4.24	4.69	5.28	5.73	7.46	8.31
10	0.63	0.68	0.87	0.92	1.73	1.83	1.71	1.81	2.15	2.35	2.19	2.39	2.96	3.21	3.24	3.49	4.48	4.93	5.22	5.67	7.80	8.65
15	0.75	0.80	1.02	1.07	1.85	1.95	1.98	2.08	2.30	2.50	2.55	2.75	3.14	3.39	3.71	3.96	4.72	5.17	5.90	6.35	8.14	8.99
20	0.74	0.79	1.01	1.06	1.97	2.07	1.97	2.07	2.45	2.65	2.53	2.73	3.32	3.57	3.68	3.93	4.96	5.41	5.84	6.29	8.48	9.33
25	0.86	0.91	1.16	1.21	2.09	2.19	2.24	2.34	2.60	2.80	2.89	3.09	3.50	3.75	4.15	4.40	5.20	5.65	6.52	6.97	8.82	9.67
30	0.85	0.90	1.15	1.20	2.21	2.31	2.23	2.33	2.75	2.95	2.87	3.07	3.68	3.93	4.12	4.37	5.44	5.89	6.46	6.91	9.16	10.01
35	—	—	—	—	2.46	2.56	2.50	2.60	3.07	3.27	3.23	3.43	4.07	4.32	4.59	4.84	5.98	6.43	7.14	7.59	9.93	10.78
40	—	—	—	—	2.45	2.55	2.49	2.59	3.05	3.25	3.21	3.41	4.04	4.29	4.56	4.81	5.92	6.37	7.08	7.53	9.84	10.69
45	—	—	—	—	2.70	2.80	2.76	2.86	3.37	3.57	3.57	3.77	4.43	4.68	5.03	5.28	6.46	6.91	7.76	8.21	10.61	11.46
50	—	—	—	—	2.69	2.79	2.75	2.85	3.35	3.55	3.55	3.75	4.40	4.65	5.00	5.25	6.40	6.85	7.70	8.15	10.52	11.37
60	—	—	—	—	2.93	3.03	3.01	3.11	3.65	3.85	3.89	4.09	4.76	5.01	5.44	5.69	6.88	7.33	8.32	8.77	11.20	12.05
70	—	—	—	—	3.17	3.27	3.27	3.37	3.95	4.15	4.23	4.43	5.12	5.37	5.88	6.13	7.36	7.81	8.94	9.39	11.88	12.73
80	—	—	—	—	3.41	3.51	3.53	3.63	4.25	4.45	4.57	4.77	5.48	5.73	6.32	6.57	7.84	8.29	9.56	10.01	12.56	13.41
90	—	—	—	—	3.65	3.75	3.79	3.89	4.55	4.75	4.91	5.11	5.84	6.09	6.76	7.01	8.32	8.77	10.18	10.63	13.24	14.09
100	—	—	—	—	3.89	3.99	4.05	4.15	4.85	5.05	5.25	5.45	6.20	6.45	7.20	7.45	8.80	9.25	10.80	11.25	13.92	14.77

※ None: Female thread; B : Male thread

Unit: kg

Bore	Ø32						Ø40						Ø50						Ø63						Ø80					
	HCF			HCF			HCF			HCF			HCF			HCF			HCF			HCF			HCF			HCF		
	D	BD	GL,GR	D	BD	GL,GR	D	BD	GL,GR	D	BD	GL,GR	D	BD	GL,GR	D	BD	GL,GR	D	BD	GL,GR	D	BD	GL,GR	D	BD	GL,GR	D	BD	GL,GR
5	1.89	2.06	1.97	1.90	2.07	1.99	2.37	2.71	2.54	2.45	2.79	2.62	3.22	3.65	3.44	3.63	4.05	3.84	4.85	5.61	5.23	5.59	6.35	5.98	10.18	11.63	10.90			
10	1.89	2.06	1.97	1.90	2.07	1.99	2.37	2.71	2.54	2.45	2.79	2.62	3.22	3.65	3.43	3.62	4.05	3.84	4.83	5.59	5.21	5.58	6.34	5.96	10.15	11.60	10.88			
15	2.11	2.28	2.20	2.14	2.31	2.23	2.66	3.00	2.83	2.77	3.11	2.94	3.58	4.00	3.79	4.05	4.47	4.26	5.32	6.08	5.70	6.18	6.95	6.57	10.87	12.31	11.59			
20	2.11	2.28	2.20	2.14	2.31	2.23	2.66	3.00	2.83	2.77	3.11	2.94	3.57	4.00	3.79	4.04	4.47	4.26	5.30	6.07	5.68	6.17	6.93	6.55	10.84	12.28	11.58			
25	2.34	2.51	2.42	2.38	2.55	2.47	2.94	3.28	3.11	3.09	3.43	3.26	3.93	4.36	4.14	4.47	4.90	4.68	5.79	6.56	6.17	6.78	7.54	7.16	11.55	12.99	12.27			
30	2.34	2.51	2.42	2.39	2.56	2.47	2.95	3.29	3.12	3.10	3.44	3.27	3.93	4.35	4.14	4.47	4.89	4.68	5.77	6.54	6.15	6.76	7.52	7.14	11.52	12.97	12.25			
35	2.56	2.73	2.65	2.63	2.80	2.71	3.23	3.57	3.40	3.42	3.76	3.59	4.28	4.71	4.50	4.89	5.32	5.10	6.26	7.03	6.64	7.37	8.13	7.75	12.23	13.68	12.96			
40	2.56	2.73	2.65	2.63	2.80	2.71	3.23	3.57	3.40	3.42	3.76	3.59	4.28	4.71	4.49	4.89	5.31	5.10	6.24	7.01	6.63	7.35	8.11	7.73	12.21	13.65	12.93			
45	2.79	2.96	2.87	2.87	3.04	2.95	3.52	3.86	3.69	3.74	4.08	3.91	4.64	5.06	4.85	5.31	5.74	5.52	6.73	7.50	7.12	7.96	8.72	8.34	12.92	14.35	13.64			
50	2.79	2.96	2.87	2.87	3.04	2.96	3.52	3.86	3.69	3.74	4.08	3.91	4.63	5.06	4.85	5.31	5.73	5.52	6.72	7.48	7.10	7.94	8.71	8.32	12.89	14.34	13.61			
60	3.01	3.18	3.10	—	—	—	3.81	4.15	3.98	—	—	—	4.99	5.41	5.20	—	—	—	7.19	7.95	7.57	—	—	—	13.58	15.02	14.30			
70	3.24	3.41	3.32	—	—	—	4.10	4.44	4.27	—	—	—	5.34	5.76	5.55	—	—	—	7.66	8.43	8.04	—	—	—	14.26	15.70	14.98			
80	3.46	3.63	3.55	—	—	—	4.39	4.73	4.56	—	—	—	5.69	6.12	5.91	—	—	—	8.13	8.90	8.52	—	—	—	14.94	16.39	15.67			
90	3.69	3.86	3.77	—	—	—	4.67	5.01	4.84	—	—	—	6.05	6.47	6.26	—	—	—	8.61	9.37	8.99	—	—	—	15.63	17.07	16.35			
100	3.91	4.08	4.00	—	—	—	4.96	5.30	5.13	—	—	—	6.40	6.82	6.61	—	—	—	9.08	9.84	9.46	—	—	—	16.31	17.76	17.03			

※ D: Double female thread type; BD: Double male thread; GL,GR: Single male thread other thread

# HC series Compact Hydraulic Cylinder

## Specification

CHELIC

### Specification

● Standard product

○ Custom product

Model	Bore \ Stroke	5	10	15	20	25	30	35	40	45	50	60	70	80	90	100
		HCF HCF-B	Ø20	○	●	○	●	○	●	—	—	—	—	—	—	—
Ø25	○		●	○	●	○	●	—	—	—	—	—	—	—	—	—
Ø32	●		●	●	●	●	●	○	●	○	●	●	—	—	—	—
Ø40	●		●	●	●	●	●	○	●	○	●	●	●	●	—	—
Ø50	●		●	●	●	●	●	○	●	○	●	●	●	●	●	—
Ø63	●		●	●	●	●	●	○	●	○	●	●	●	●	●	●
Ø80	●		●	●	●	●	●	○	●	○	●	●	●	●	●	●
HCF-D HCF-BD HCF-GL	Ø32	○	●	○	●	○	●	○	●	○	●	●	—	—	—	—
	Ø40	○	●	○	●	○	●	○	●	○	●	●	●	●	—	—
	Ø50	○	●	○	●	○	●	○	●	○	●	●	●	●	●	—
	Ø63	○	●	○	●	○	●	○	●	○	●	●	●	●	●	●
HCF-Z HCF-B-Z HCF-L HCF-B-L	Ø32	○	●	○	●	○	●	○	●	○	●	●	—	—	—	—
	Ø40	○	●	○	●	○	●	○	●	○	●	●	●	●	—	—
	Ø50	○	●	○	●	○	●	○	●	○	●	●	●	●	●	—
	Ø63	○	●	○	●	○	●	○	●	○	●	●	●	●	●	●
	Ø80	○	●	○	●	○	●	○	●	○	●	●	●	●	●	●

SCR(L)

HER

HGR(L)

HSR(L)

HBR(L)

HFR(L)

HFK

Model	Bore \ Stroke	5	10	15	20	25	30	35	40	45	50	60	70	80	90	100
		HCS HCS-B	Ø32	○	●	○	●	○	●	○	●	○	●	—	—	—
Ø40	○		●	○	●	○	●	○	●	○	●	—	—	—	—	—
Ø50	○		●	○	●	○	●	○	●	○	●	—	—	—	—	—
Ø63	○		●	○	●	○	●	○	●	○	●	—	—	—	—	—
HCS-D HCS-BD HCS-GL HCS-GR	Ø32	○	●	○	●	○	●	○	●	○	●	—	—	—	—	—
	Ø40	○	●	○	●	○	●	○	●	○	●	—	—	—	—	—
	Ø50	○	●	○	●	○	●	○	●	○	●	—	—	—	—	—
	Ø63	○	●	○	●	○	●	○	●	○	●	—	—	—	—	—
HCS-Z HCS-B-Z HCS-L HCS-B-L	Ø32	○	●	○	●	○	●	○	●	○	●	—	—	—	—	—
	Ø40	○	●	○	●	○	●	○	●	○	●	—	—	—	—	—
	Ø50	○	●	○	●	○	●	○	●	○	●	—	—	—	—	—
	Ø63	○	●	○	●	○	●	○	●	○	●	—	—	—	—	—

HCK

HLK

HUR(L)

HUK

HN

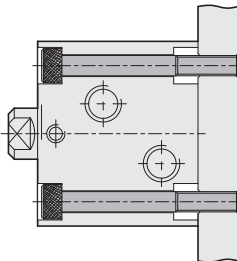
HS

HCF

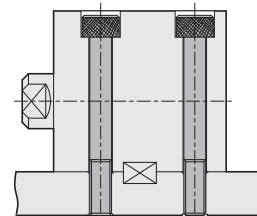
HCS

HCQ

### Mounting type



● HCF: Front mounting



● HCS: Side mounting

# HC series Compact Hydraulic Cylinder

## Product features

CHELIC

### Order code of seal kit

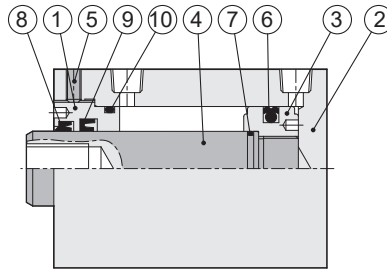
HC  SK   
 F  
 S

Bore size	Seal kit components
20	HCFSK20 -Include No.6, 7, 8, 9, 10
25	HCFSK25 -Include No.6, 7, 8, 9, 10
32	HCFSK32, HCSSK32 -Include No.6, 7, 8, 9, 10
40	HCFSK40, HCSSK40 -Include No.6, 7, 8, 9, 10
50	HCFSK50, HCSSK50 -Include No.6, 7, 8, 9, 10
63	HCFSK63, HCSSK63 -Include No.6, 7, 8, 9, 10
80	HCFSK80 -Include No.6, 7, 8, 9, 10

HC  SK  D  
 F  
 S

Bore size	Seal kit components
32	HCFSK32D, HCSSK32D-Include No.6, 7, 8, 9, 10
40	HCFSK40D, HCSSK40D-Include No.6, 7, 8, 9, 10
50	HCFSK50D, HCSSK50D-Include No.6, 7, 8, 9, 10
63	HCFSK63D, HCSSK63D-Include No.6, 7, 8, 9, 10
80	HCFSK80D, -Include No.6, 7, 8, 9, 10

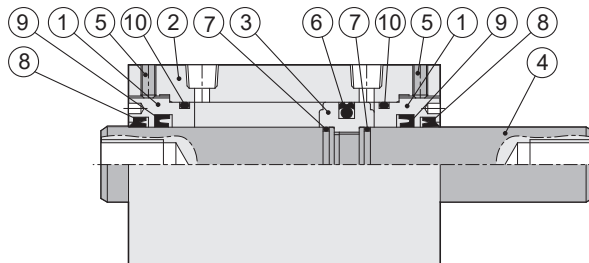
### HCF Type HCS Type



### Components and quantity

No.	Item	Quantity	No.	Item	Quantity	No.	Item	Quantity
01	Front cover	1	05	Plug	1	09	Shaft seal	1
02	Body	1	06	Piston packing	1	10	Front cover O-ring	1
03	Piston	1	07	Piston O-ring	1	11		
04	Piston rod	1	08	scrap ring	1	12		

### HCF-D Type HCS-D Type



### Components and quantity

No.	Item	Quantity	No.	Item	Quantity	No.	Item	Quantity
01	Front cover	2	05	Plug	2	09	Shaft seal	2
02	Body	1	06	Piston packing	1	10	Front cover O-ring	2
03	Piston	1	07	Piston O-ring	2	11		
04	Piston rod	1	08	Scrap ring	2	12		

# HC series Compact Hydraulic Cylinder

## Product features

CHELIC

### Order code of seal kit

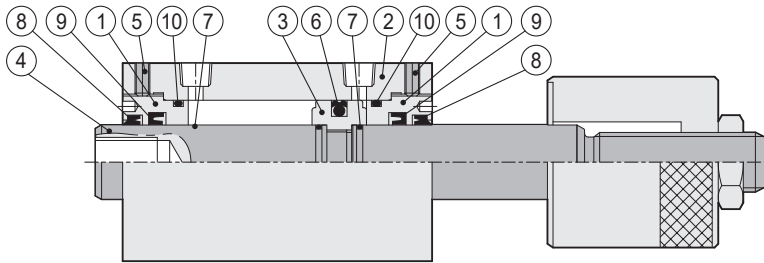
HC  SK  Z  
 F  
 S

Bore size	Seal kit components
32	HCFSK32Z, HCSSK32Z-Include No.6, 7, 8, 9, 10
40	HCFSK40Z, HCSSK40Z-Include No.6, 7, 8, 9, 10
50	HCFSK50Z, HCSSK50Z-Include No.6, 7, 8, 9, 10
63	HCFSK63Z, HCSSK63Z-Include No.6, 7, 8, 9, 10
80	HCFSK80Z, -Include No.6, 7, 8, 9, 10

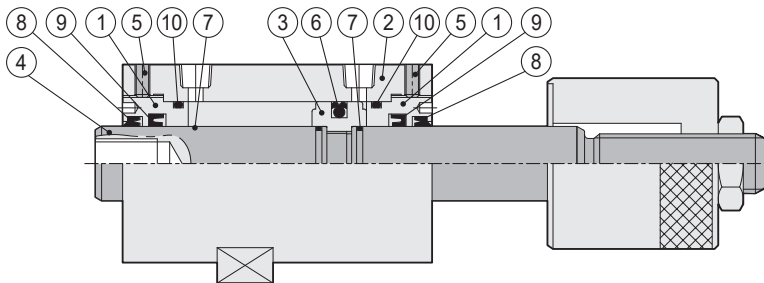
HC  SK  L  
 F  
 S

Bore size	Seal kit components
32	HCFSK32L, HCSSK32L-Include No.6, 7, 8, 9, 10
40	HCFSK40L, HCSSK40L-Include No.6, 7, 8, 9, 10
50	HCFSK50L, HCSSK50L-Include No.6, 7, 8, 9, 10
63	HCFSK63L, HCSSK63L-Include No.6, 7, 8, 9, 10
80	HCFSK80L, -Include No.6, 7, 8, 9, 10

- HCF-Z type** ( Adjustable stroke 25mm )  
**HCF-L type** ( Adjustable stroke 50mm )



- HCS-Z type** ( Adjustable stroke 25mm )  
**HCS L type** ( Adjustable stroke 50mm )



### Components and quantity

No.	Item	Quantity	No.	Item	Quantity	No.	Item	Quantity
01	Front cover	2	05	Plug	2	09	Shaft seal	2
02	Body	1	06	Piston packing	1	10	Front cover O-ring	2
03	Piston	1	07	Piston O-ring	2	11		
04	Piston rod	1	08	Scrap ring	2	12		

SCR(L)

HER

HGR(L)

HSR(L)

HBR(L)

HFR(L)

HFK

HCK

HLK

HUR(L)

HUK

HN

HS

HCF

HCS

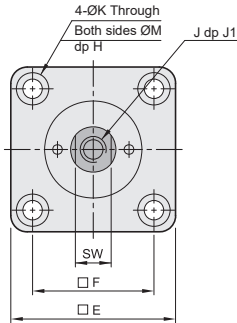
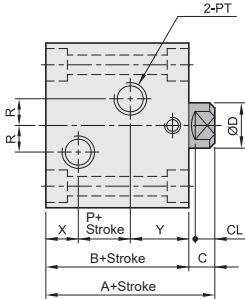
HCQ

# HCF series Compact Hydraulic Cylinder/End-side Mounting

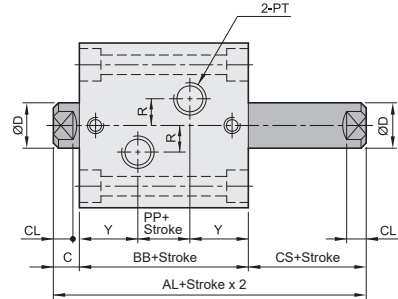
Dimension - HCF Ø20 ~ Ø80

CHELIC

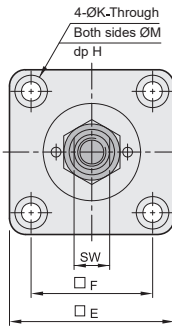
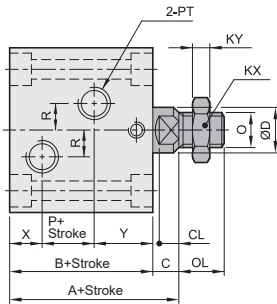
## ▶ HCF



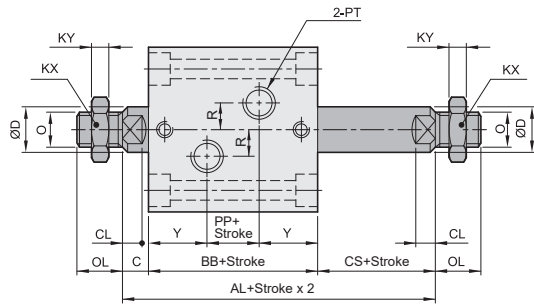
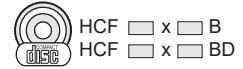
## ▶ HCF-D



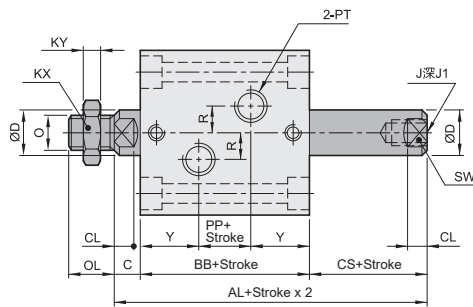
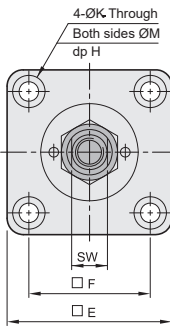
## ▶ HCF-B



## ▶ HCF-BD



## ▶ HCF-GL



Bore size	A	B	P	AL	BB	CS	PP
Ø20	51	43	10	—	—	—	—
Ø25	53	45	12	—	—	—	—
Ø32	64	54	14	89	69	10	13
Ø40	65	55	15	90	70	10	14
Ø50	71	60	18	97	75	11	16
Ø63	80	67	20	108	82	13	20
Ø80	95	78	27	127	93	17	27

Bore size	C	CL	D	E	F	H	J	J1	K	KX	KY	M	O	OL	PT	R	SW	X	Y
Ø20	8	6	12	42	30	5.5	M8×1.25P	10	5.6	17	6	9	M10×1.25P	20	PT 1/8	5	10	10	23
Ø25	8	6	14	48	36	5.5	M10×1.5P	12	5.6	19	7	9	M12×1.25P	22	PT 1/8	5	12	10	23
Ø32	10	7	20	62	47	6.5	M12×1.75P	15	6.6	24	8	11	M16×1.5P	25	PT 1/4	10	17	12	28
Ø40	10	7	25	70	52	9	M16×2.0P	20	9	32	10	14	M22×1.5P	30	PT 1/4	10	22	12	28
Ø50	11	8	30	80	58	11	M20×2.5P	25	11	35	14	18	M26×1.5P	35	PT 1/4	10	27	12.5	29.5
Ø63	13	10	35	94	69	13	M27×3.0P	35	13	41	13	20	M30×1.5P	40	PT 3/8	10	32	16	31
Ø80	17	14	45	114	86	15	M30×3.5P	35	15	50	10	22	M39×1.5P	45	PT 3/8	15	41	18	33

Note : Please contact with our sales representative for non standard stroke.

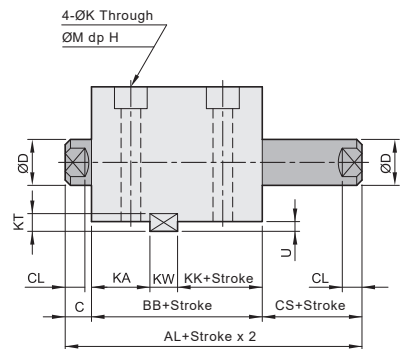
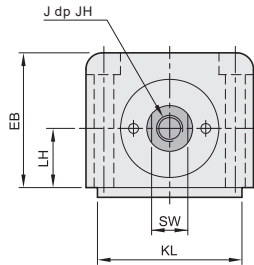
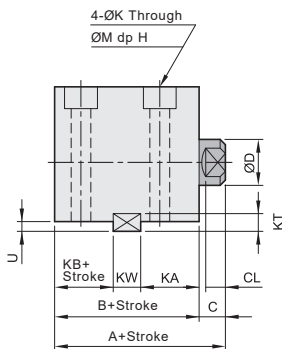
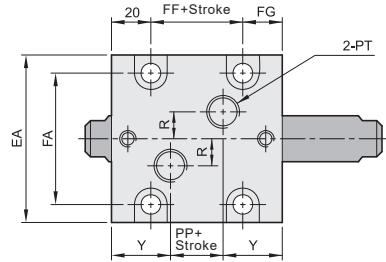
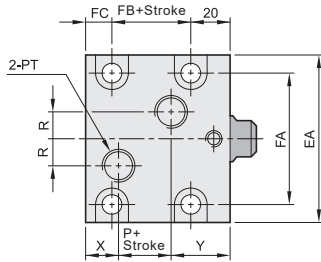
# HCS series Compact Hydraulic Cylinder/ Horizontal Mounting

Dimension - HCS Ø32 ~ Ø63

CHELIC

► HCS

► HCS-D



Bore size	A	B	FB	KB	P	AL	BB	CS	FF	KK	PP	C	CL	D	EA	EB	FA	FC	FG
Ø32	64	54	24	14	14	89	69	10	32	29	13	10	7	20	70	56	56	10	17
Ø40	65	55	23	15	15	90	70	10	32	30	14	10	7	25	80	64	62	12	18
Ø50	71	60	27	17	18	97	75	11	35	32	16	11	8	30	94	74	74	13	20
Ø63	80	67	32	20	20	108	82	13	42	35	20	13	10	35	114	89	90	15	20

Bore size	H	J	JH	K	KA	KL	KT	KW	LH	M	PT	R	SW	U	X	Y
Ø32	9	M12×1.75P	15	9	28	63	8	12	25	14	PT 1/4	10	17	4.5	12	28
Ø40	11	M16×2.0P	20	11	28	70	8	12	29	18	PT 1/4	10	22	4.5	12	28
Ø50	13	M20×2.5P	25	13	29	80	9	14	34	20	PT 1/4	10	27	5	12.5	29.5
Ø63	15	M27×3.0P	35	15	31	100	10	16	42	22	PT 3/8	10	32	5.5	16	31

Note: Please contact with our sales representative for non standard stroke.

SCR(L)

HER

HGR(L)

HSR(L)

HBR(L)

HFR(L)

HFK

HCK

HLK

HUR(L)

HUK

HN

HS

HCF

HCS

HCQ

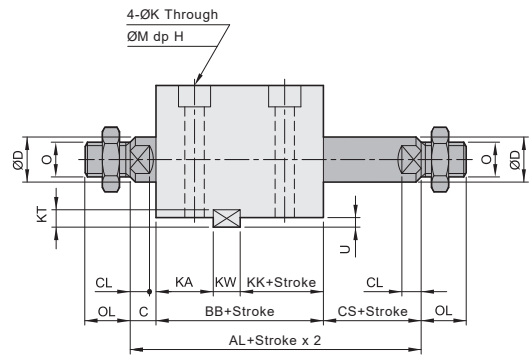
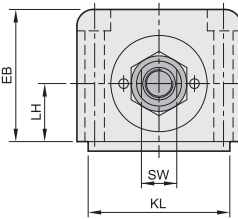
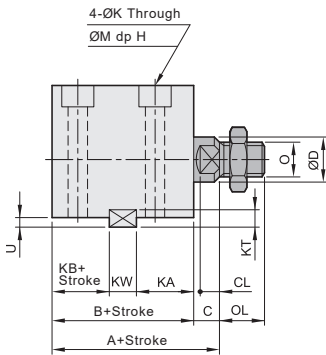
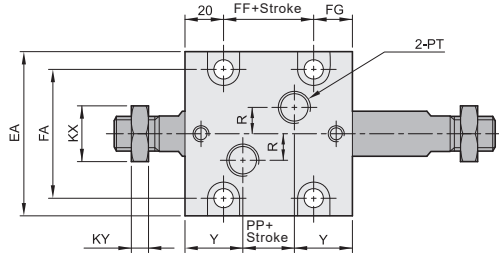
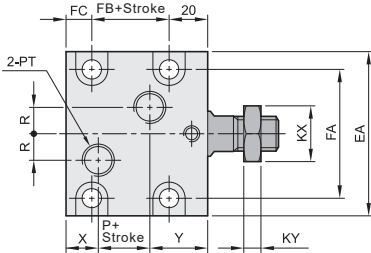
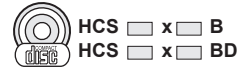
# HCS series Compact Hydraulic Cylinder/ Horizontal Mounting

Dimension - HCS Ø32 ~ Ø63

CHELIC

## ► HCS-B

## ► HCS-BD



Bore size	A	B	FB	KB	P	AL	BB	CS	FF	KK	PP	C	CL	D	EA	EB	FA	FC	FG	H
Ø32	64	54	24	14	14	89	69	10	32	29	13	10	7	20	70	56	56	10	17	9
Ø40	65	55	23	15	15	90	70	10	32	30	14	10	7	25	80	64	62	12	18	11
Ø50	71	60	27	17	18	97	75	11	35	32	16	11	8	30	94	74	74	13	20	13
Ø63	80	67	32	20	20	108	82	13	42	35	20	13	10	35	114	90	90	15	20	15

Bore size	K	KA	KL	KT	KW	KX	KY	LH	M	O	OL	PT	R	SW	U	X	Y
Ø32	9	28	63	8	12	24	8	25	14	M16×1.5P	25	PT 1/4	10	17	4.5	12	28
Ø40	11	28	70	8	12	32	10	29	18	M22×1.5P	30	PT 1/4	10	22	4.5	12	28
Ø50	13	29	80	9	14	35	14	34	20	M26×1.5P	35	PT 1/4	10	27	5	12.5	29.5
Ø63	15	31	100	10	16	41	13	42	22	M30×1.5P	40	PT 3/8	10	32	5.5	16	31

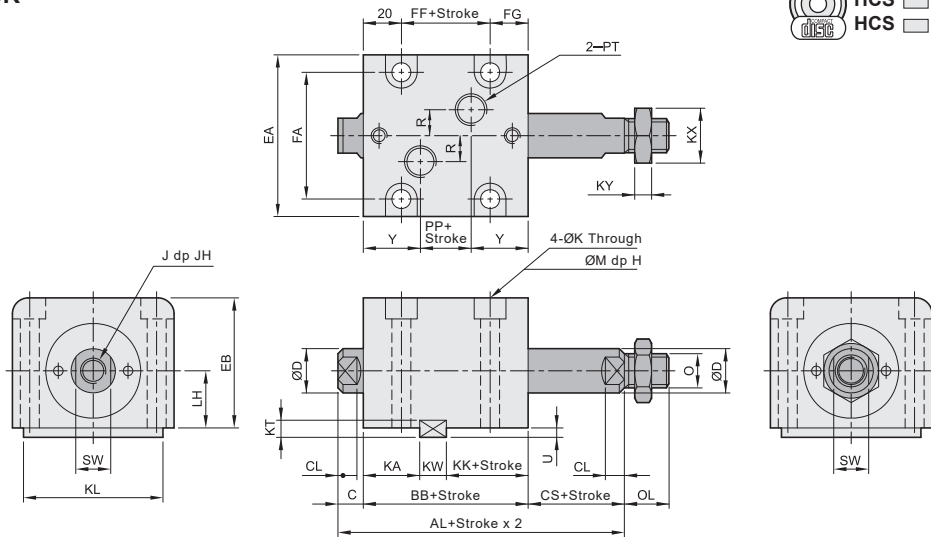
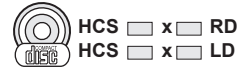
Note: Please contact with our sales representative for non standard stroke.

# HCS series Compact Hydraulic Cylinder/ Horizontal Mounting

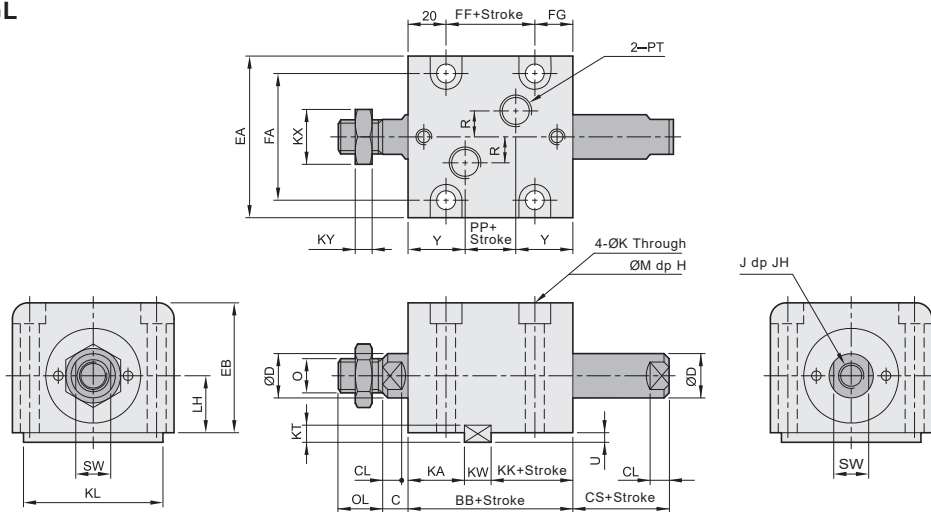
Dimension - HCS Ø32 ~ Ø63

CHELIC

## ► HCS-GR



## ► HCS-GL



Bore size	AL	BB	CS	FF	KK	PP	C	CL	D	EA	EB	FA	FG	H	J	JH
Ø32	89	69	10	32	29	13	10	7	20	70	56	56	17	9	M12×1.75P	15
Ø40	90	70	10	32	30	14	10	7	25	80	64	62	18	11	M16×2.0P	20
Ø50	97	75	11	35	32	16	11	8	30	94	74	74	20	13	M20×2.5P	25
Ø63	108	82	13	42	35	20	13	10	35	114	89	90	20	15	M27×3.0P	35

Bore size	K	KA	KL	KT	KW	KX	KY	LH	M	O	OL	PT	R	SW	U	Y
Ø32	9	28	63	8	12	24	8	25	14	M16×1.5P	25	PT 1/4	10	17	4.5	28
Ø40	11	28	70	8	12	32	10	29	18	M22×1.5P	30	PT 1/4	10	22	4.5	28
Ø50	13	29	80	9	14	35	14	34	20	M26×1.5P	35	PT 1/4	10	27	5	29.5
Ø63	15	31	100	10	16	41	13	42	22	M30×1.5P	40	PT 3/8	10	32	5.5	31

Note: Please contact with our sales representative for non standard stroke.

SCR(L)

HER

HGR(L)

HSR(L)

HBR(L)

HFR(L)

HFK

HCK

HLK

HUR(L)

HUK

HN □

HS □

HCF

HCS

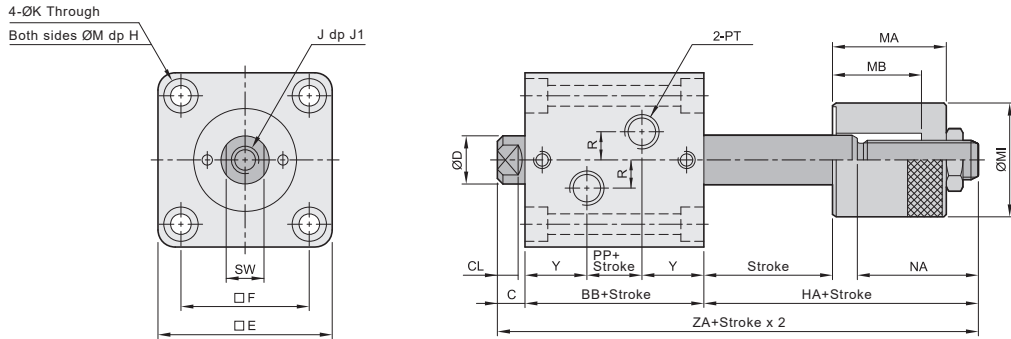
HCC

# HCF series Compact Hydraulic Cylinder/End-side Mounting

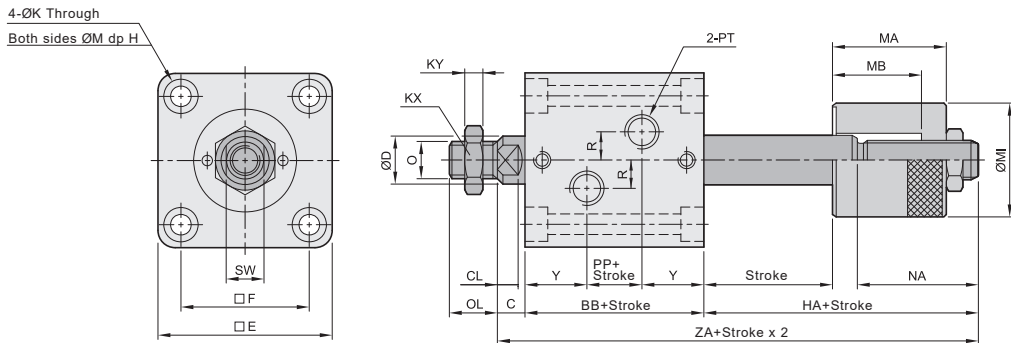
Dimensions - HCF-Z, HCF-BZ Ø32 ~ Ø80

CHELIC

## ● HCF-Z (Adjustable stroke 25mm)



## ● HCF-B-Z (Adjustable stroke 25mm)



Bore size	ZA	BB	PP	HA	C	CL	D	E	F	H	J	J1	K	KX	KY
Ø32	138	69	13	59	10	7	20	62	47	6.5	M12×1.75P	15	6.6	24	8
Ø40	148	70	14	68	10	7	25	70	52	9	M16×2.0P	20	9	32	10
Ø50	156	75	16	70	11	8	30	80	58	11	M20×2.5P	25	11	35	14
Ø63	173	82	20	78	13	10	35	94	69	13	M27×3.0P	35	13	41	13
Ø80	192	93	27	82	17	14	45	114	86	15	M30×3.5P	35	15	50	10

Bore size	M	MI	MA	MB	NA	O	OL	PT	R	SW	Y
Ø32	11	46	46	36	49	M16×1.5P	25	PT 1/4	10	17	28
Ø40	14	55	54	36	58	M22×1.5P	30	PT 1/4	10	22	28
Ø50	18	60	53	37	59	M26×1.5P	35	PT 1/4	10	27	29.5
Ø63	20	75	63	39	65	M30×1.5P	40	PT 3/8	10	32	31
Ø80	22	90	70	43	65	M39×1.5P	45	PT 3/8	15	41	33

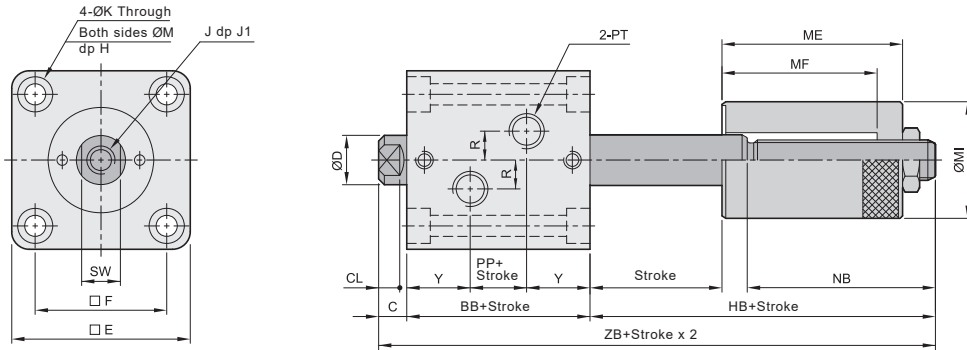
Note : Please contact with our sales representative for non standard stroke.

# HCF series Compact Hydraulic Cylinder/End-side Mounting

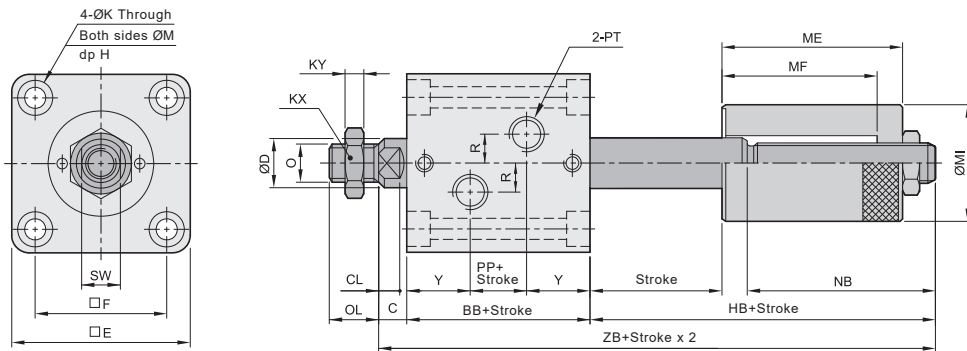
Dimensions - HCF-L, HCF-BL Ø32 ~ Ø80

CHELIC

## ● HCF-L (Adjustable stroke 50mm)



## ● HCF-B-L (Adjustable stroke 50mm)



Bore size	ZB	BB	PP	HB	C	CL	D	E	F	H	J	J1	K	KX	KY
Ø32	163	69	13	84	10	7	20	62	47	6.5	M12×1.75P	15	6.6	24	8
Ø40	173	70	14	93	10	7	25	70	52	9	M16×2.0P	20	9	32	10
Ø50	181	75	16	95	11	8	30	80	58	11	M20×2.5P	25	11	35	14
Ø63	198	82	20	103	13	10	35	94	69	13	M27×3.0P	35	13	41	13
Ø80	217	93	27	107	17	14	45	114	86	15	M30×3.5P	35	15	50	10

Bore size	M	MI	ME	MF	NB	O	OL	PT	R	SW	Y
Ø32	11	46	71	61	74	M16×1.5P	25	PT 1/4	10	17	28
Ø40	14	55	79	61	83	M22×1.5P	30	PT 1/4	10	22	28
Ø50	18	60	78	62	84	M26×1.5P	35	PT 1/4	10	27	29.5
Ø63	20	75	88	64	90	M30×1.5P	40	PT 3/8	10	32	31
Ø80	22	90	95	68	90	M39×1.5P	45	PT 3/8	15	41	33

Note : Please contact with our sales representative for non standard stroke.

SCR(L)

HER

HGR(L)

HSR(L)

HBR(L)

HFR(L)

HFK

HCK

HLK

HUR(L)

HUK

HN □

HS □

HCF

HCS

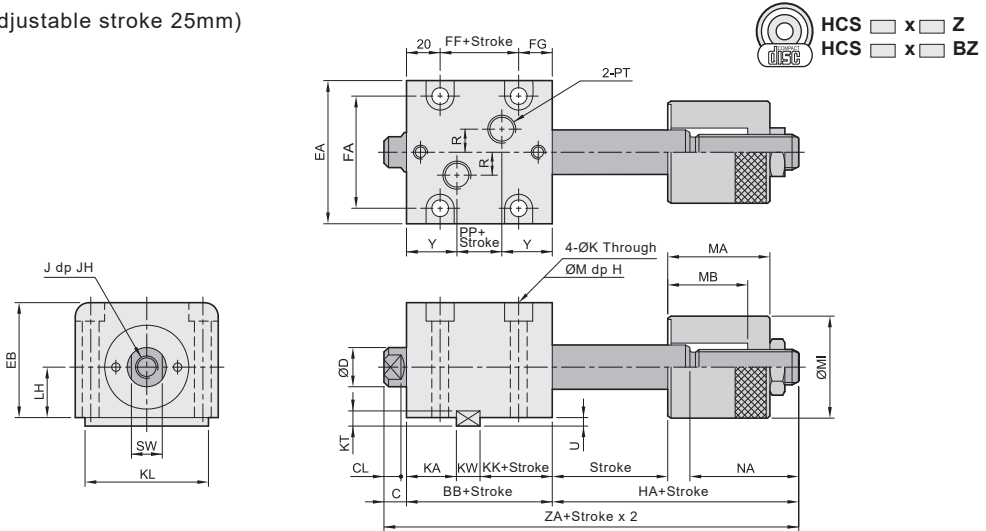
HQC

# HCS series Compact Hydraulic Cylinder/Horizontal Mounting

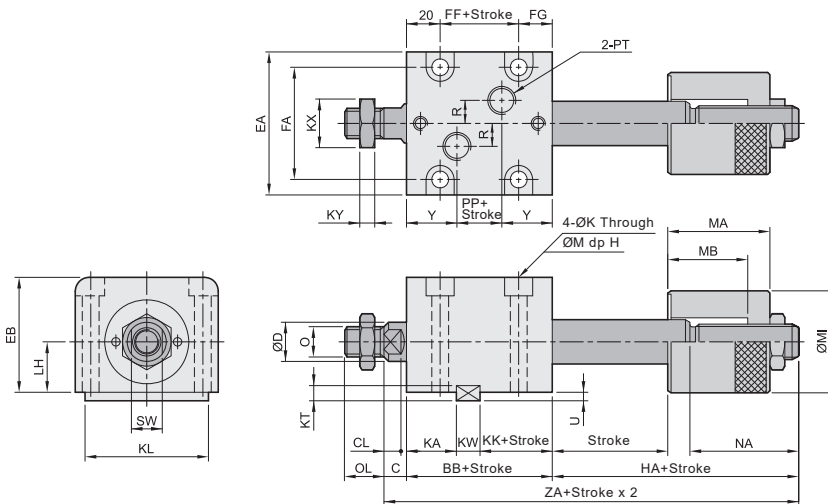
Dimensions - HCS-Z, HCS-BZ Ø32 ~ Ø63

CHELIC

## ► HCS-Z (Adjustable stroke 25mm)



## ► HCS-B-Z (Adjustable stroke 25mm)



Bore size	ZA	BB	FF	KK	PP	HA	C	CL	D	EA	EB	FA	FG	H	J	JH	K	KA	KL
Ø32	138	69	32	29	13	59	10	7	20	70	56	56	17	9	M12×1.75P	15	9	28	63
Ø40	148	70	32	30	14	68	10	7	25	80	64	62	18	11	M16×2.0P	20	11	28	70
Ø50	156	75	35	32	16	70	11	8	30	94	74	74	20	13	M20×2.5P	25	13	29	80
Ø63	173	82	42	35	20	78	13	10	35	114	89	90	20	15	M27×3.0P	35	15	31	100

Bore size	KT	KW	KX	KY	LH	M	MI	MA	MB	NA	O	OL	PT	R	SW	U	Y
Ø32	8	12	24	8	25	14	46	46	36	49	M16×1.5P	25	PT 1/4	10	17	4.5	28
Ø40	8	12	32	10	29	18	55	54	36	58	M22×1.5P	30	PT 1/4	10	22	4.5	28
Ø50	9	14	35	14	34	20	60	53	37	59	M26×1.5P	35	PT 1/4	10	27	5	29.5
Ø63	10	16	41	13	42	22	75	63	39	65	M30×1.5P	40	PT 3/8	10	32	5.5	31

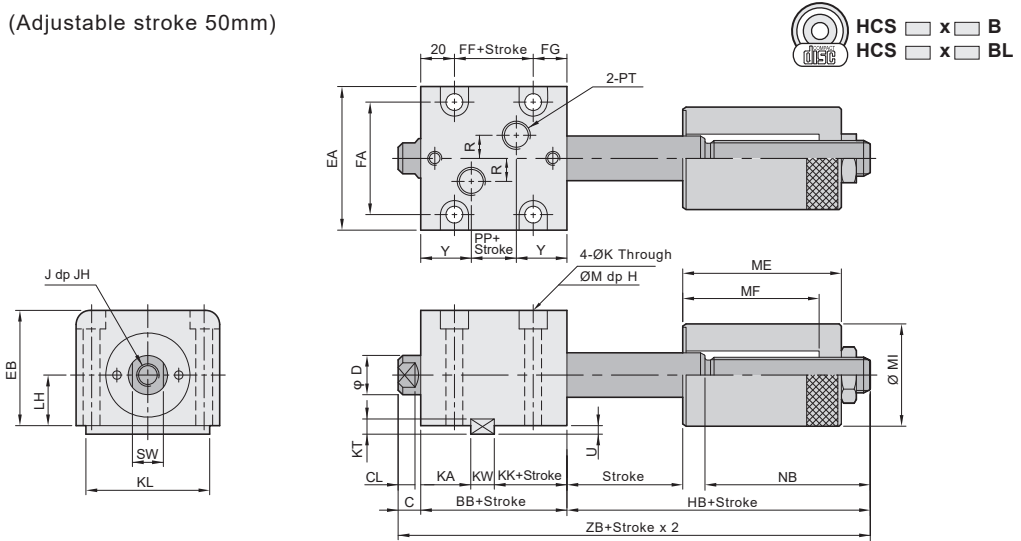
Note : Please contact with our sales representative for non standard stroke.

# HCS series Compact Hydraulic Cylinder/Horizontal Mounting

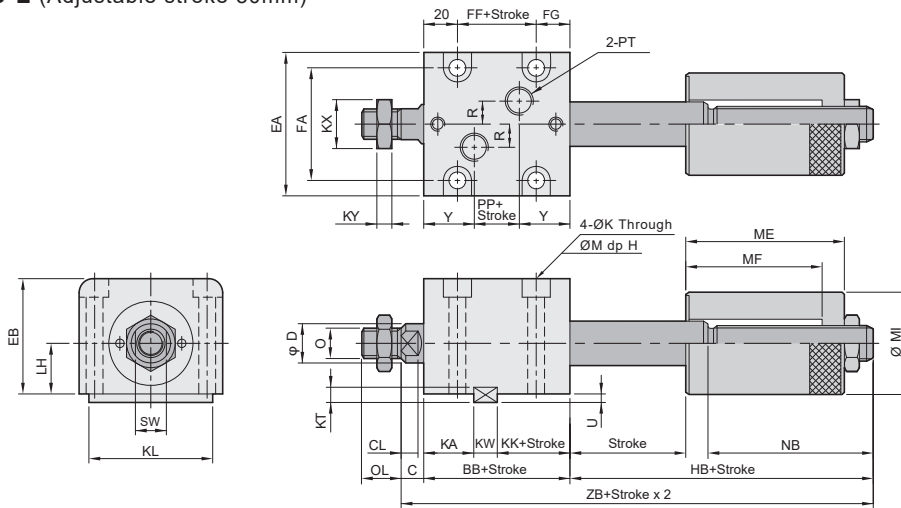
Dimensions - HCS-L, HCS-BL Ø32 ~ Ø63

CHELIC

## ► HCS-L (Adjustable stroke 50mm)



## ► HCS-B-L (Adjustable stroke 50mm)



Bore size	ZB	BB	FF	KK	PP	HB	C	CL	D	EA	EB	FA	FG	H	J	JH	K	KA	KL
Ø32	183	69	32	29	13	84	10	7	20	70	56	56	17	9	M12×1.75P	15	9	28	63
Ø40	173	70	32	30	14	93	10	7	25	80	64	62	18	11	M16×2.0P	20	11	28	70
Ø50	181	75	35	32	16	95	11	8	30	94	74	74	20	13	M20×2.5P	25	13	29	80
Ø63	198	82	42	35	20	103	13	10	35	114	89	90	20	15	M27×3.0P	35	15	31	100

Bore size	KT	KW	KX	KY	LH	M	MI	ME	MF	NB	O	OL	PT	R	SW	U	Y
Ø32	8	12	24	8	25	14	46	71	61	74	M16×1.5P	25	PT 1/4	10	17	4.5	28
Ø40	8	12	32	10	29	18	55	79	61	83	M22×1.5P	30	PT 1/4	10	22	4.5	28
Ø50	9	14	35	14	34	20	60	78	62	84	M26×1.5P	35	PT 1/4	10	27	5	29.5
Ø63	10	16	41	13	42	22	75	88	64	90	M30×1.5P	40	PT 3/8	10	32	5.5	31

Note : Please contact with our sales representative for non standard stroke.

SCR(L)

HER

HGR(L)

HSR(L)

HBR(L)

HFR(L)

HFK

HCK

HLK

HUR(L)

HUK

HN □

HS □

HCF

HCS

HCC