

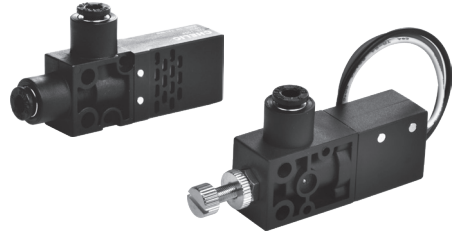
VAB/ VABS series Vacuum Ejector

Product features/ Code of order

CHELIC

Feature

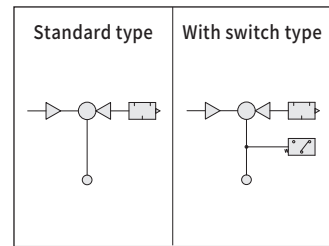
- Light and compact, easy to install.
- Fitting design, easy to piping.
- Sensing switch: manual type pressure switch option



Specification

Item	Model	0704	0706	1204	1206	1508	1510
Fluid		Air					
Ambient and fluid temperature	°C	0~60					
Lubrication		Unnecessary					
Pressure range	MPa(kPa)	0.1~0.6(100~600)					
Nozzle diameter	Ø(mm)	0.7	0.7	1.2	1.2	1.5	1.5
Max. Vacuum value		-91.8					
Port size	Ø(mm)	4	6	4	6	8	10

Vacuum ejector symbol



Vacuum ejectors performance table

Model	Item	Nozzle diameter (mm)	Port size (mm)	Suction flow (L/min)	Vacuum pressure kPa(mmHg)	Air consumption (L/min)	Supply air pressure MPa(kPa)
VAB-0704		Ø0.7	Ø4	9	-86.7(650)	22	0.5(500)
VAB-0706		Ø0.7	Ø6	9	-91.8(690)	22	0.5(500)
VAB-1204		Ø1.2	Ø4	32	-91.8(690)	64	0.5(500)
VAB-1206		Ø1.2	Ø6	32	-91.8(690)	64	0.5(500)
VAB-1508		Ø1.5	Ø8	64	-91.8(690)	192	0.5(500)
VAB-1510		Ø1.5	Ø10	64	-91.8(690)	192	0.5(500)

Code of order **VABS - 07 - 06**



1	Mark	With switch	Image
	VAB	Without switch	
	VABS	With vacuum pressure switch	

2	Mark	Nozzle diameter
	07	0.7
	12	1.2
	15	1.5

3	Mark	Port size (mm)
	04	Ø4
	06	Ø6
	08	Ø8
	10	Ø10

VAB series Selection table:

Model	1 With switch	2 Nozzle diameter	3 Port size
VAB	S	07	04
			06
		12	04
			06
		15	08
			10

EV

EV M

VA □

VM □

VM □ U

VHS

VSL

VKM

VKMT

VCK

VK20 □

VK30 □

VQ20 □

VFD

VFM

VFU

ERV

ERVL

MVS

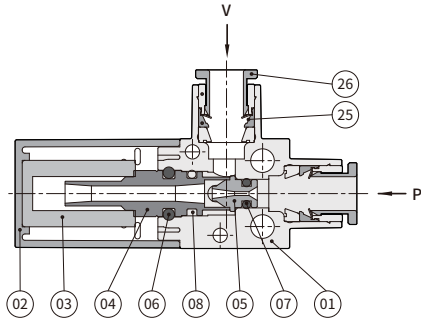
VAB/ VABS series Vacuum Ejector

Product features

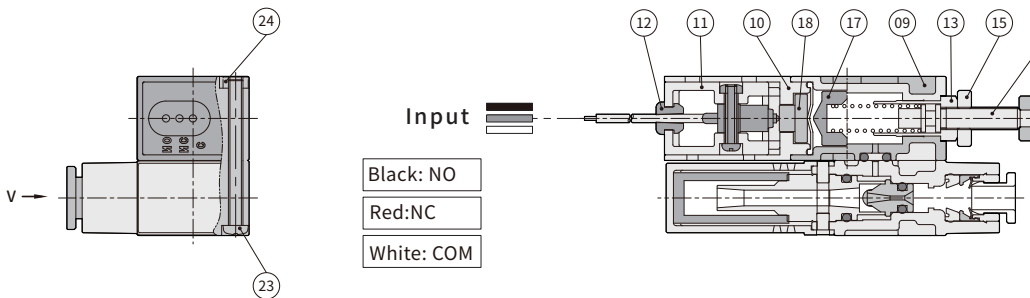
CHELIC

Internal structure

► VAB



► VABS



Components and Material list

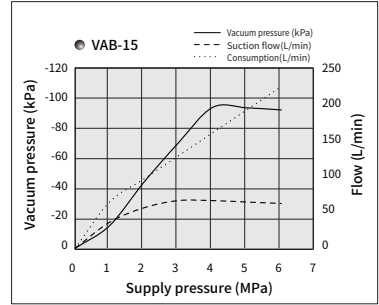
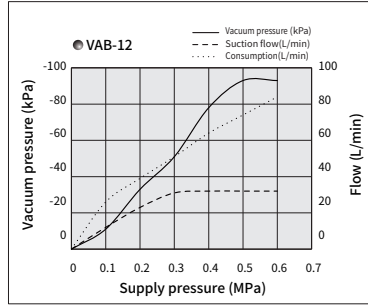
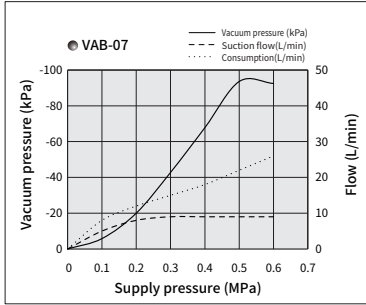
No.	Item	Material	No.	Item	Material
01	Ejector body	Nylon fiber	14	Adjusting bolt	Copper Alloy
02	Filter cap	Nylon fiber	15	Screw	Copper Alloy
03	Filter	EA30	16	Adjusting rod	Copper Alloy
04	Exhaust pipe	Copper Alloy	17	Spring block	Copper Alloy
05	Nozzle	Copper Alloy	18	Sensor block	Copper Alloy
06	Pin	Copper Alloy	19	Sensor device screw	Copper Alloy
07	Nozzle O-ring	NBR	20	Spring	Spring steel
08	Exhaust pipe O-ring	NBR	21	Sensor	-
09	Mechanical switching body	Nylon fiber	22	Sensor device cable	Brass, Plastic
10	Switching lower body	Nylon fiber	23	Vacuum body screw	Alloy steel
11	Sensor holder	Nylon fiber	24	Vacuum body nut	Alloy steel
12	Wire holder	NBR	25	The 3-fitting part	Copper Alloy
13	Lever sleeve	Copper Alloy	26	Release ring	POM

VAB/ VABS series Vacuum Ejector

Dimensions

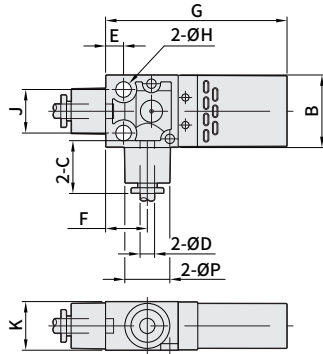
CHELIC

Characteristics



External dimensions

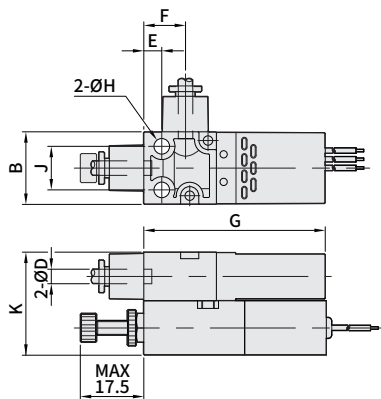
VAB



Unit: mm

Model	Item	Port size ØD	ØP	B	C	E	F	G	H	J	K	Weight (g)
VAB-074		Ø4	12.4	20	14.5	5	11.5	50	4.3	12	13.4	18
VAB-076		Ø6			16							
VAB-124		Ø4	17.8	28	14.5	7	16	70	5.2	18	18.8	25
VAB-126		Ø6			16							
VAB-158		Ø8	17.8	28	18.5	7	16	70	5.2	18	18.8	25
VAB-1510		Ø10			20							

VABS



Unit: mm

Model	Item	Port size ØD	B	E	F	G	H	J	K	Weight(g)
VABS-074		Ø4	20	5	11.5	50	4.3	12	26.8	47
VABS-076		Ø6								
VABS-124		Ø4	28	7	16	70	5.2	18	37.6	60
VABS-126		Ø6								
VABS-158		Ø8	28	7	16	70	5.2	18	37.6	60
VABS-1510		Ø10								

EV

EVM

VA □

VM □

VM □ U

VHS

VSL

VKM

VKMT

VCK

VK20 □

VK30 □

VQ20 □

VFD

VFM

VFU

ERV

ERVL

MVS