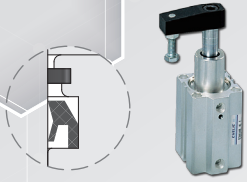


Dual scraper type cylinder series

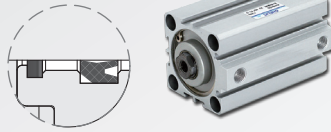
Scrape and dust removal model + **W1** Mark Phosphor bronze
 + **W2** Mark Stainless steel

Applicable industry
 Machining, Welding, PCB, Dust work, Stamping, Automobile, Electronics... etc industries.



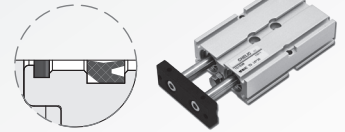
Bore size: $\varnothing 20 \sim \varnothing 40$

SCR(L)W series - Scraper Type Rotary Clamp Cylinder



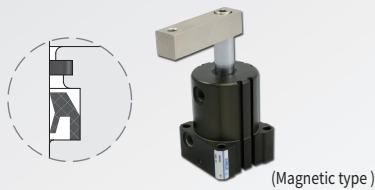
Bore size: $\varnothing 20 \sim \varnothing 100$

JDW series - Scraper Type Compact Cylinder



Bore size: $\varnothing 16 \sim \varnothing 32$

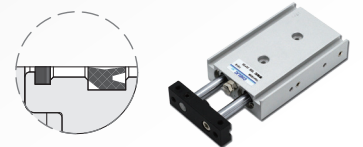
TDW series - Scraper Type Dual Rod Cylinder



(Magnetic type)

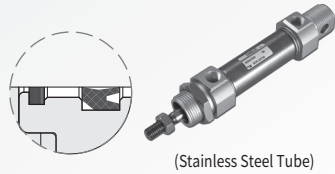
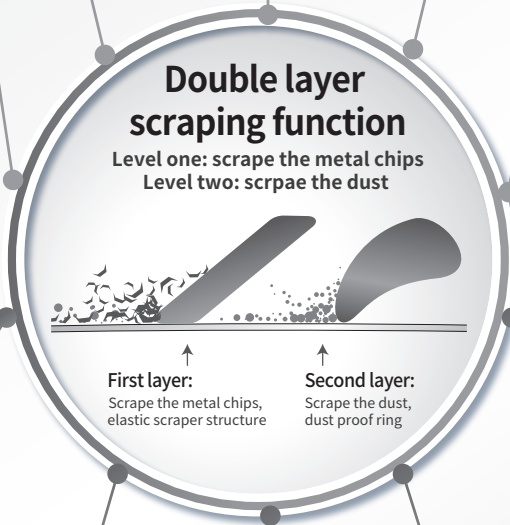
HBR(L)W series - Scraper Directional Rotary Clamp Cylinder

Bore size: $\varnothing 20 \sim \varnothing 40$



TDXW series - Scraper Type Dual Rod Cylinder

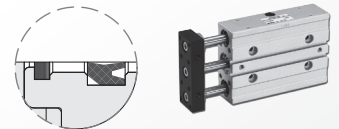
Bore size: $\varnothing 16 \sim \varnothing 25$



(Stainless Steel Tube)

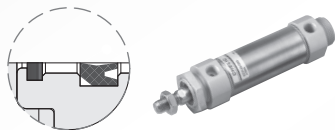
SDAW series - Scraper Type Air Cylinder

Bore size: $\varnothing 20 \sim \varnothing 40$



TB(U)2W series - Scraper Type Compact Cylinder

Bore size: $\varnothing 16 \sim \varnothing 32$

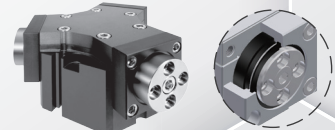


SDXW series - Scraper Type Air Cylinder (Stainless)

Bore size: $\varnothing 20 \sim \varnothing 40$

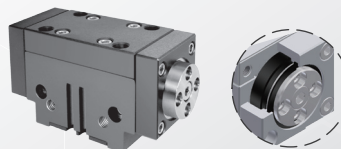
HMG series - Three-sided Force Air Gripper (Standard)

Bore size: $\varnothing 22 \sim \varnothing 55$



HMT series - Dual-sided Force Type Air Gripper (Standard)

Bore size: $\varnothing 55 \sim \varnothing 40$



TDXW series Scraper Type Dual Rod Cylinder

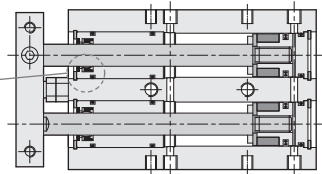
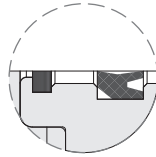
Internal structure, Code of order, Scraper description

CHELIC



☛ Metal scrap ring

☛ Internal structure

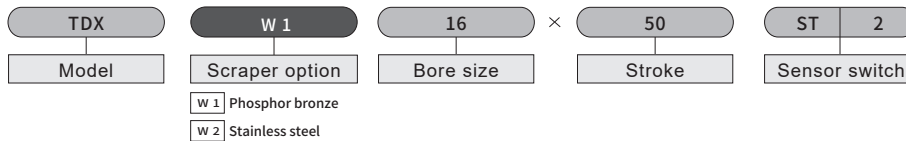


Scraper type

☛ Scraper bore size

Available scraper bore size			
Bore siz(Ø)	16	20	25

☛ Code of order



Note: The outer size is same as the original design; Please refer page P.6-10.14

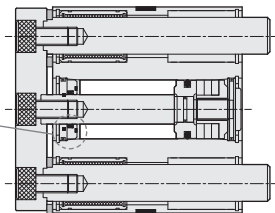
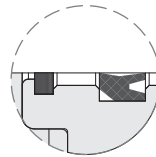
TB(U)2W series Scraper Type Compact Cylinder

Internal structure, Code of order, Scraper description



☛ Metal scrap ring

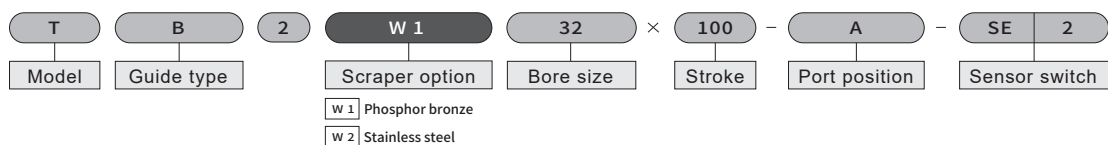
☛ Internal structure



☛ Scraper bore size

Available scraper bore size				
Bore siz(Ø)	16	20	25	32

☛ Code of order



Note: The outer size is same as the original design; Please refer page P.6-11.2
6-2.2

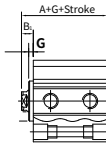
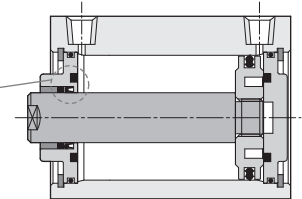
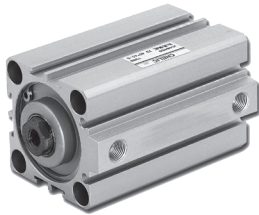
JDW series Scraper Type Compact Cylinder

Internal structure, Code of order, Scraper description

CHELIC

► Metal scrap ring

► Internal structure



► Scraper bore size

Available scraper bore size								
Bore siz(Ø)	20	25	32	40	50	63	80	100
G	4.8	4.9	6.3	6.3	6.9	6.9	8	6

► Code of order

JD	W 1	32	×	50	-	B	-	LB	-	S	E	2
Model	Scraper option	Bore size		Stroke		Thread type		Mounting type		Sensor switch		
	W 1 Phosphor bronze											
	W 2 Stainless steel											

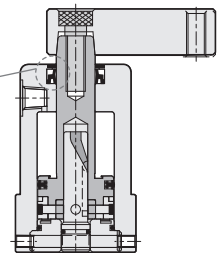
Note: All dimension is sam as original size but except "G" size; Please refer page P.6-3.59

HBR(L)W series Scraper Directional Rotary Clamp Cylinder (Magnetic type)

Internal structure, Code of order, Scraper description

► Metal scrap ring

► Internal structure



► Scraper bore size

Available scraper bore size				
Bore siz(Ø)	20	25	32	40

► Code of order

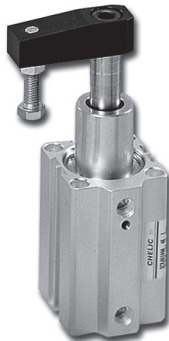
HB	R	W 1	×	25	×	13	-	SD	2
Model		Scraper option		Bore size		Stroke		Sensor switch	
		W 1 Phosphor bronze							
		W 2 Stainless steel							

Note: The outer size is same as the original design; Please refer page P.6-13.21

SCR(L)W series Scraper Type Rotary Clamp Cylinder

Internal structure, Code of order, Scraper description

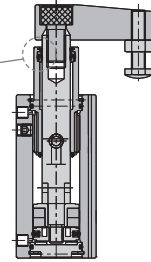
CHELIC



▶ Metal scrap ring



▶ Internal structure

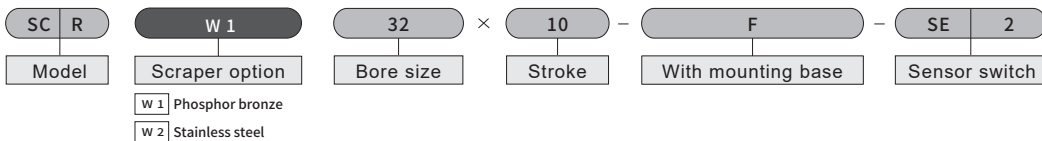


Scraper type

▶ Scraper bore size

Available scraper bore size				
Bore siz(Ø)	20	25	32	40

▶ Code of order

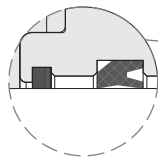


Note: The outer size is same as the original design; Please refer page P.6-13.6

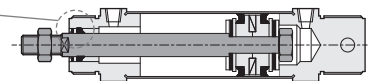
SDAW series Scraper Type Air Cylinder (Stainless Steel Tube)

Internal structure, Code of order, Scraper description

▶ Metal scrap ring



▶ Internal structure



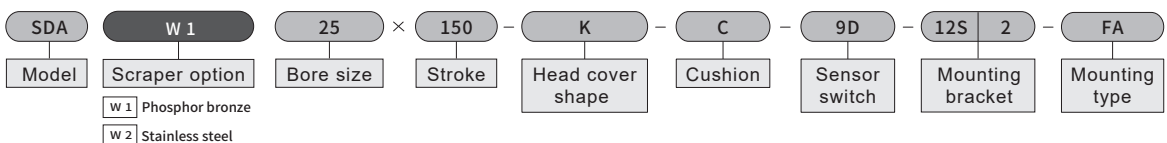
ISO-6432規格



▶ Scraper bore size

Available scraper bore size				
Bore siz(Ø)	20	25	32	40

▶ Code of order



Note: The outer size is same as the original design; Please refer page P.6-5.16

SDXW series Scraper Type Air Cylinder (Stainless Steel Tube)

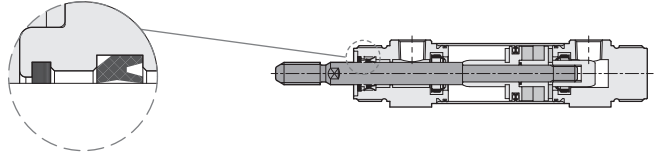
Internal structure, Code of order, Scraper description

CHELIC



▶ Metal scrap ring

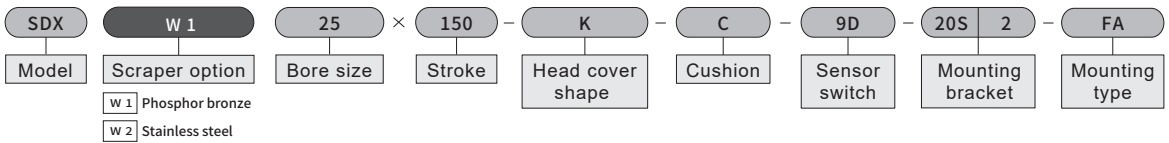
▶ Internal structure



▶ Scraper bore size

Available scraper bore size				
Bore siz(Ø)	20	25	32	40

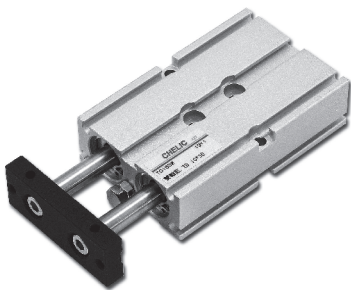
▶ Code of order



Note: The outer size is same as the original design; Please refer page P.6-5.22

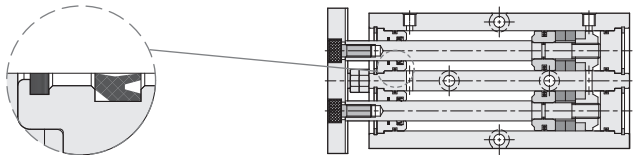
TDW series Scraper Type Dual Rod Cylinder

Internal structure, Code of order, Scraper description



▶ Metal scrap ring

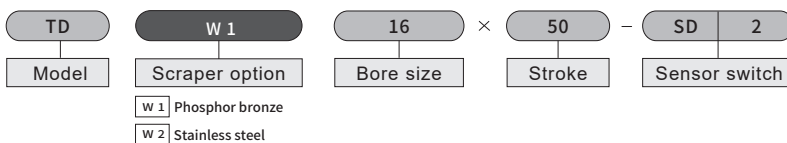
▶ Internal structure



▶ Scraper bore size

Available scraper bore size				
Bore siz(Ø)	16	20	25	32

▶ Code of order

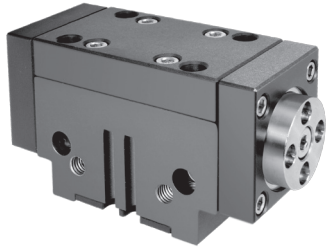


Note: The outer size is same as the original design; Please refer page P.6-10.2

HMG series Dual-sided Force Air Gripper (Standard type)

Internal structure, Code of order, Scraper description

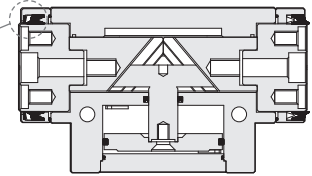
CHELIC



▶ Metal scrap ring



▶ Internal structure



Scraper
type

▶ Scraper bore size

Available scraper bore size					
Bore siz(Ø)	22	27	34	44	55

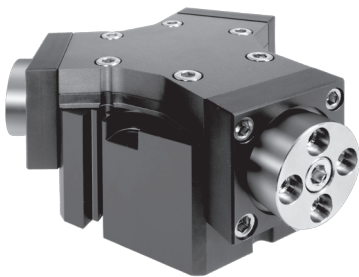
▶ Code of order

HMG	L	22	-	8G	2
Model	Type	Bore size		Sensor switch	

Note: The outer size is same as the original design; Please refer page P.6-14.108

HMT series Three-sided Force Air Gripper (Standard type)

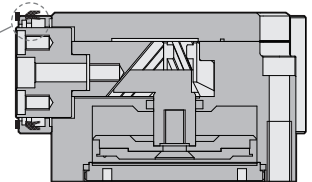
Internal structure, Code of order, Scraper description



▶ Metal scrap ring



▶ Internal structure



▶ Scraper bore size

Available scraper bore size		
Bore siz(Ø)	55	70

▶ Code of order

HMT	55	-	8G	2
Model	Bore size		Sensor switch	

Note: The outer size is same as the original design; Please refer page P.6-14.192