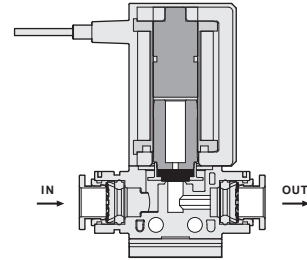
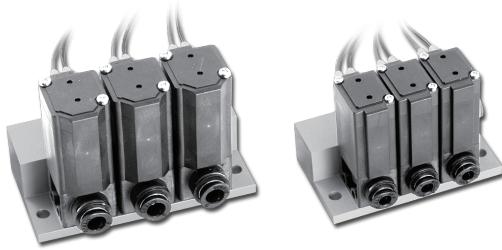


SU series 2/2 Solenoid Valve

Product features/ Code of order

CHELIC

Internal structure



● Applicable to air, water and vacuum fluid.

Specification

Item	Model	SU12	SU22
Fluid		Applicable to air, water and vacuum	
Ambient and fluid temperature	°C	5 ~ 60	
Number of position ports		2/2 Solenoid valve	
Type of actuation		Normally closed	
Pilot type		Direct operated (General)	
Pressure range	kgf/cm ² (kPa)	0 ~ 9.0 (0 ~ 900)	
Withstand pressure	kgf/cm ² (kPa)	10 (1000)	
Port size		Ø4	Ø6
Orifice	mm Ø	1.6	3.3
Effective orifice(Cv factor)	mm ²	1.26 (0.07)	5.4 (0.3)
The max. operating pressure differential*	kgf/cm ² (kPa)	4 (400)	2 (200)
Pressure range (Max. range)	Air	0 ~ 9 (0 ~ 900)	
	Water (Normal)		
	Vacuum	-1 ~ 0 (-100 ~ 0)	
Material	Body	PPS	
	Coil	PBT-G30	
Weight	kg	0.05	0.08

*Note: The max. operating pressure differential is while supply port pressure over exhaust pressure value.

Code of order

SU Series : 2/2 Solenoid valve

SU - **12** - **C4** - **DC24** - **W** - **C** | **1**

Model number: 12: 12 Series, 22: 22 Series

With fitting port:

Mark	Port	Model
C4	Ø4	SU12
C6	Ø6	SU22

※Port fitting type

Voltage:

Mark	Model
SU12	24V DC / 2.3W
SU22	24V DC / 4.6W

Electrical entry: Grommet

*With wire length 300mm

Bracket type: C1

Body mounting type: C2

Manifold quantity: M2

None : without manifold
M2 = 2 sets
M3 = 3 sets
.....
M10 = 10 sets
※Bracket not included in manifold type

SBS

SU

SFW

SUB

SUG

SUD2

SUW2

SUS

SAS

SDC

SU12 series 2/2 Solenoid Valve

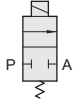
Dimensions/ Single unit/ With bracket

CHELIC

☉ SU12-W-C1

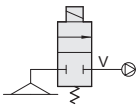
Fluid assembly description:

- For positive pressure working environment :

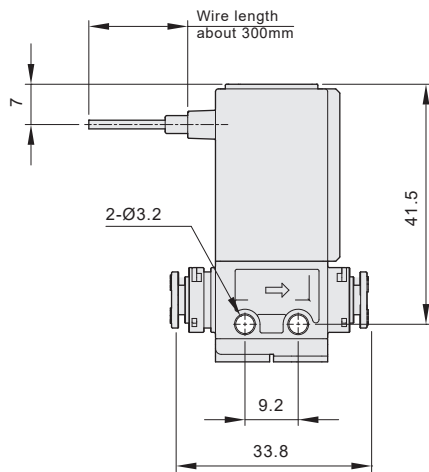
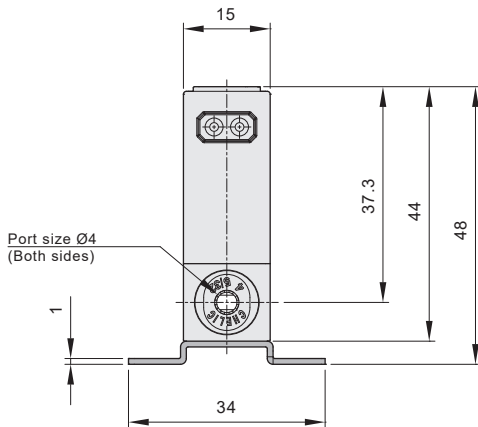
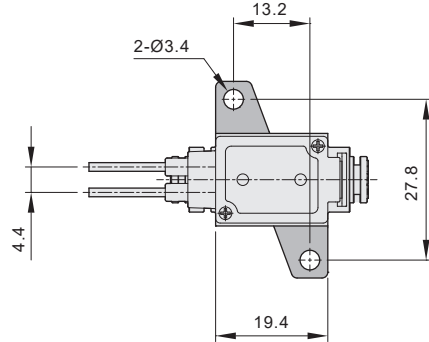
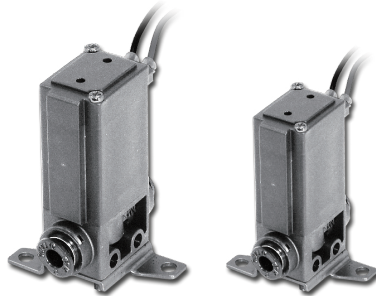


Note: Air supply setting at "IN" port

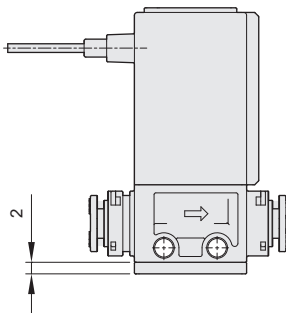
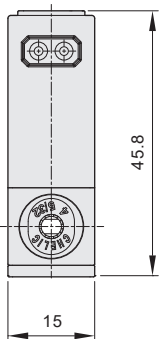
- Under negative pressure working environment :



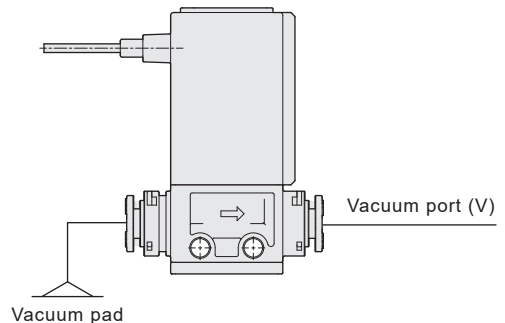
Note: Vacuum supply setting "OUT" port



☉ SU12-W-C2



☉ Under vacuum working environment - How to Assembly



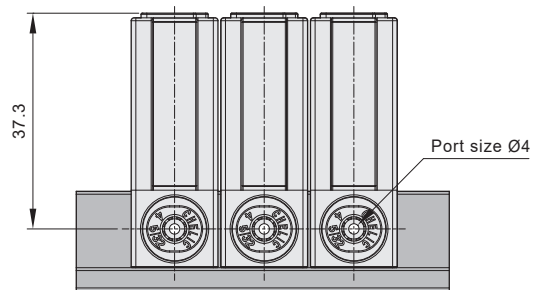
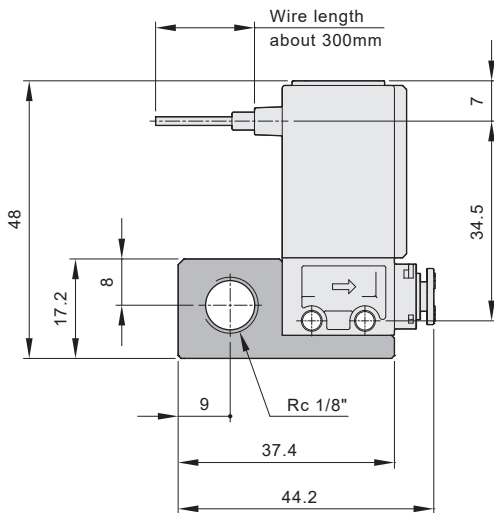
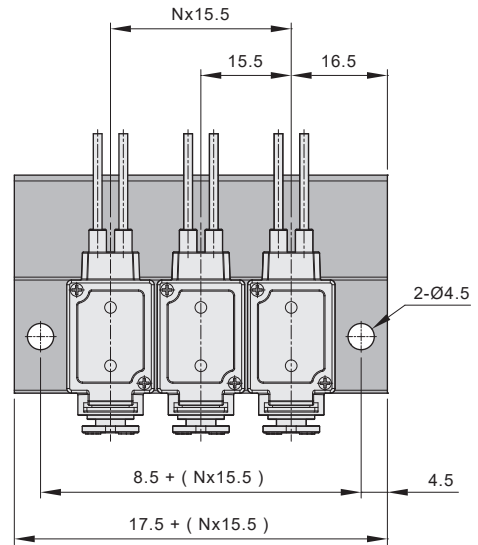
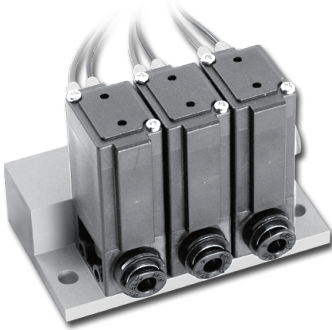
※ Note: The product with arrow indicates positive pressure, otherwise negative pressure.

SU22 series 2/2 Solenoid Valve

Dimensions/ Manifold type

CHELIC

☉ SU-12
Manifold size



Manifold type not available to vacuum working requirement

SBS

SU

SFW

SUB

SUG

SUD2

SUW2

SUS

SAS

SDC

SU22 series 2/2 Solenoid Valve

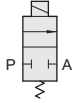
Dimensions/ Single unit/ With bracket

CHELIC

☛ SU22-W-C1

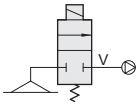
Fluid assembly description:

- For positive pressure working environment:

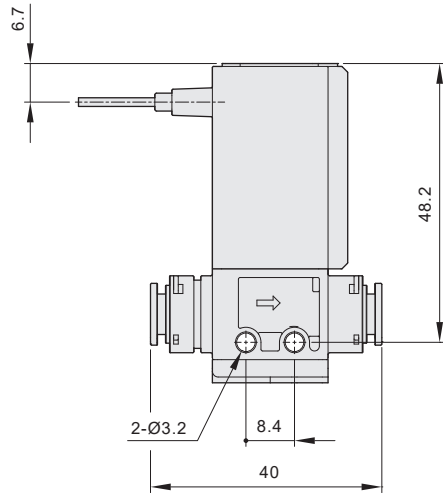
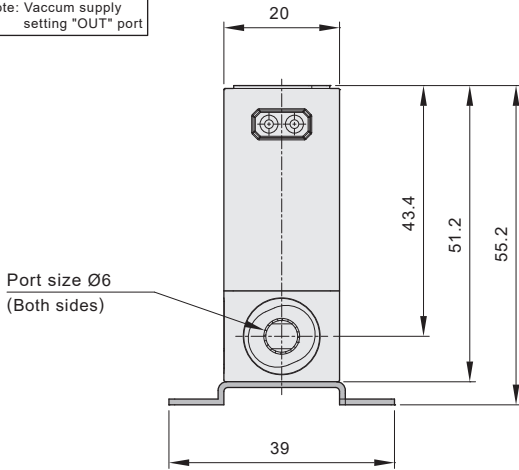
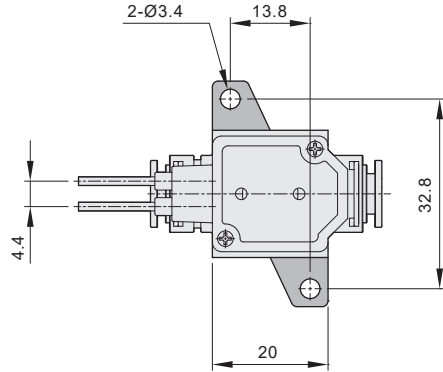
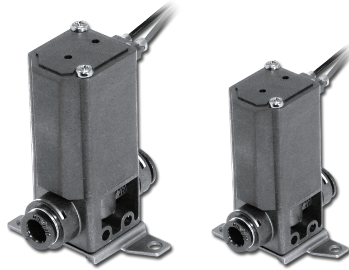


Note: Air supply setting at "IN" port

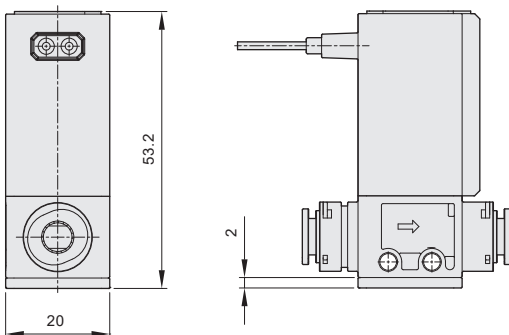
- Under negative pressure working environment:



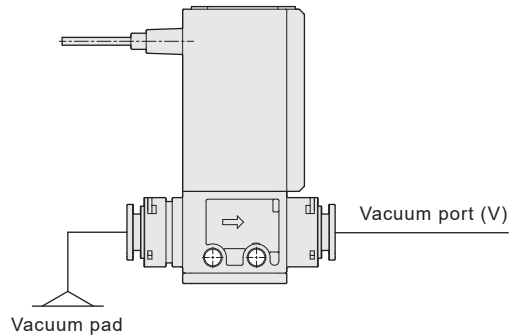
Note: Vacuum supply setting "OUT" port



☛ SU22-W-C2



☛ Under vacuum working environment - How to Assembly



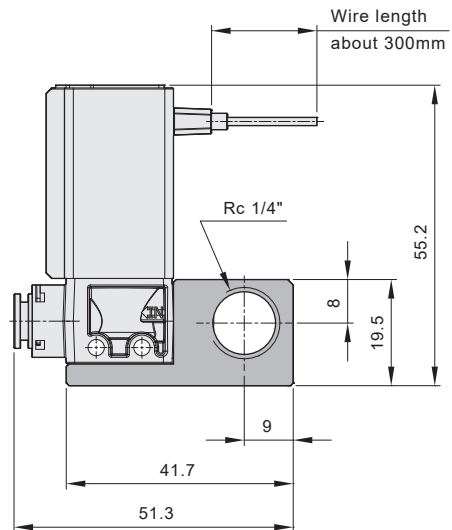
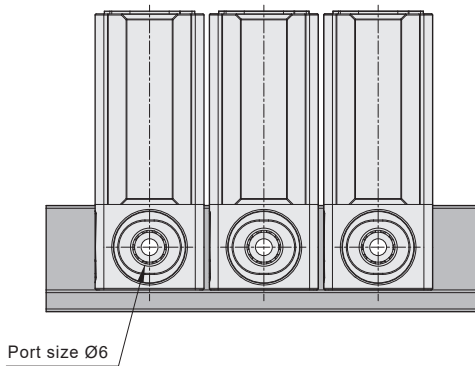
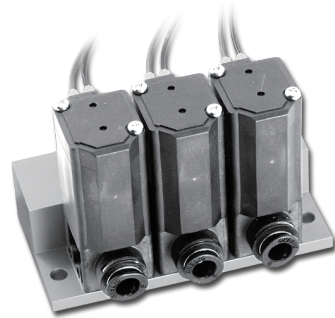
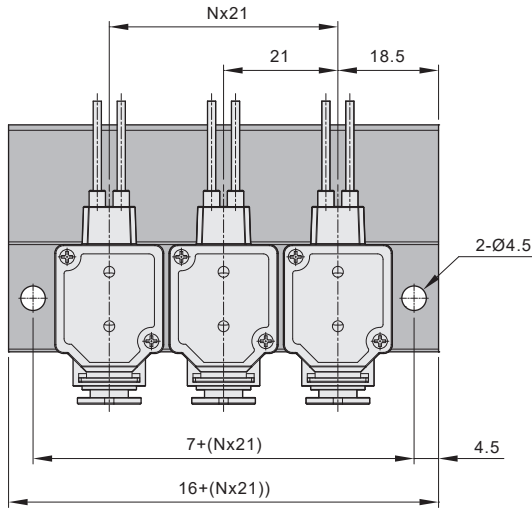
※ Note: The product with arrow indicates positive pressure, otherwise negative pressure.

SU22 series 2/2 Solenoid Valve

Dimensions/ Manifold type

CHELIC

☉ SU-22 Manifold size



Manifold type not available to vacuum working requirement

SBS

SU

SFW

SUB

SUG

SUD2

SUW2

SUS

SAS

SDC