

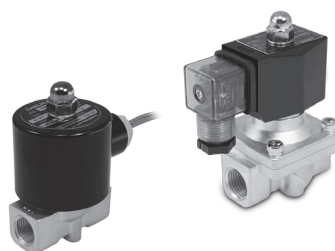
SUW2 series 2/2 Solenoid Valve

Product features/ Code of order

CHELIC

Feature

- Large flow capacity for gas or liquid control.
- Direct operated at low pressure.
- DIN connector or lead wire type available.



Specification

Item		Model	SUW2 10		SUW2 15		SUW2 20		SUW2 25		SUW2 35		SUW2 40		SUW2 50	
Wiring methods			-W	-K	-W	-K	-W	-K	-W	-K	-W	-K	-W	-K	-W	-K
Fluid			Suitable for air, water and light oil													
Pressure range (Max. range) (kgf / cm ² (kPa))	Air		0 ~ 7 (0 ~ 700)													
	Water(Normal)		0 ~ 5 (0 ~ 500)													
	Oil (Circulate)		0 ~ 5 (0 ~ 500)													
Ambient and fluid temperature (°C)			-5 ~ 80													
Voltage	110 VAC	Power (W)	13VA	26	13	26	13	26	13	26	28VA	48	28VA	48	28	48
	220 VAC		13VA	26	13	26	13	26	13	26	28VA	48	28VA	48	28	48
	DC 24 V		18W	18	18	18	18	18	18	18	50	48	50	48	50	48
Min. energization time (S)			0.05													
Pilot type			Direct diaphragm type (High flow)													
Number of position ports			Number of position ports													
Type of actuation			Normally closed (Custom made for normally open type)													
Port size (Rc)			Rc 3/8		Rc 1/2		Rc 3/4		Rc 1		G 1¼		G 1½		G 2	
Orifice (mm Ø)			16		16		20		25		35		40		50	
Effective orifice (Cv factor)			4.8		4.8		7.6		12		24		29		48	
Material	Body		Forge brass													
	Diaphragm		NBR, Viton, Silicon													
	Spring		Stainless steel													
Weight (Kg)			0.88	0.91	0.88	0.88	0.9	0.91	1.17	1.18	2.44	2.23	2.64	2.49	3.73	3.96

Note : This product is not suitable for the liquid of high temperature, the fluid of solid while cooling and the fluid of corrosive and viscosity exceed 20CST

SUW2 series 2/2 Solenoid Valve

Code of order/ Dimension

CHELIC

Code of order **SUW2 20 - D2 - K**

1 — 2 — 3

1

Mark	Port size
10	Rc 3/8
15	Rc 1/2
20	Rc 3/4
25	Rc 1
35	G 1¼
40	G 1½
50	G 2

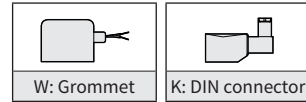
2

Mark	Voltage
D2	24V DC
A1	110V AC
A2	220V AC

3

Mark	Connection type
W	Grommet type
K	DIN connector type

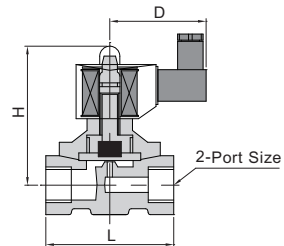
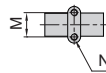
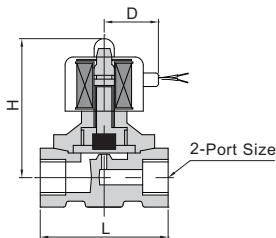
● Image



Dimension

● W - Grommet type

● K - DIN connector type



Item	Model	SUW2 10	SUW2 15	SUW2 20	SUW2 25	SUW2 35	SUW2 40	SUW2 50
D		W type 48, K type 58				W type 58 / K type 69		
H		97	99	103	135	137	152	
L		67	71	92	118	125	168	
M		30	27	—				
N		M6x1.0P			—			