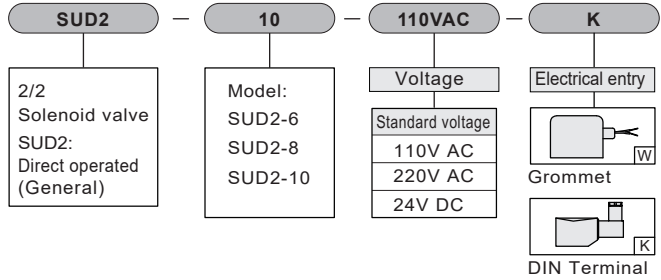
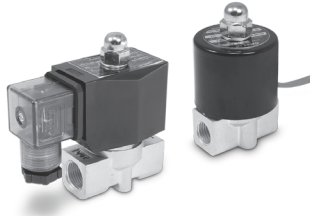


SUD2 series 2/2 Solenoid Valve

Product features/ Code of order


CHELIC

Code of order

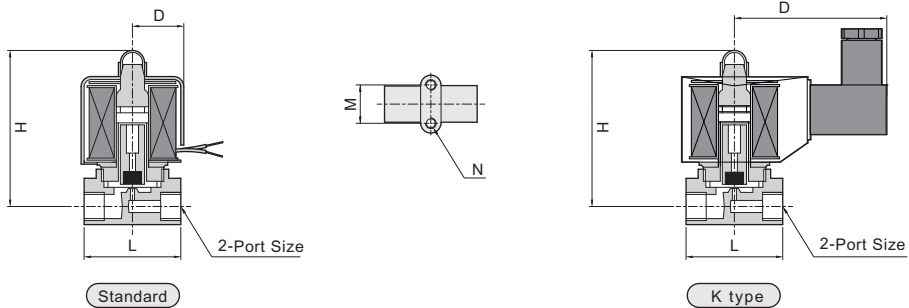


Specification

Item	Model	SUD2-6	SUD2-8	SUD2-10
Fluid		Suitable for air, water, light oil and steam		
Ambient and fluid temperature °C		-5 ~ 80		
Number of position ports		2/2 Solenoid valve		
Type of actuation		Normally closed (Custom made for normally open type)		
Pilot type		Direct operated (General)		
Port size Rc		1/8	1/4	3/8
Orifice mm Ø		2.5		4
Effective orifice(Cv factor) mm ²		0.23		0.6
Pressure range (Max. range) kgf/cm ² (kPa)	Air	0 ~ 7 (0 ~ 700)		0 ~ 10 (0 ~ 1000)
	Water (Normal)			
	Oil (Circulate)			
	Steam			
Material	Body	Forge brass		
	Diaphragm	NBR, Viton, Silicon		
	Spring	Stainless steel		
Weight kg		0.3		0.6

 Note : This product is not suitable for the liquid of high temperature, the fluid of solid while cooling and the fluid of corrosive and viscosity exceed 20CST

External dimensions



Item	Model	SUD2-6-W	SUD2-6-K	SUD2-8-W	SUD2-8-K	SUD2-10-W	SUD2-10-K
D		21	56	21	56	48	58
H		62				75	
L		42				53	
M		18				21	
N		M5 x 0.8P				M5 x 0.8P	