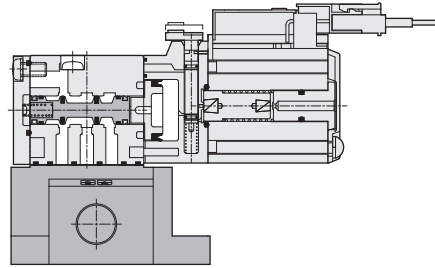
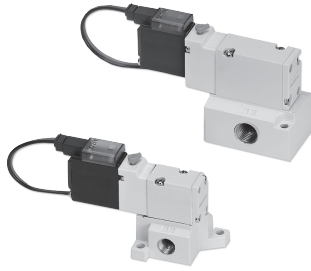


# SMUB series 3/2 Base Mounted Solenoid Valve

Product features

**CHELIC**

## Internal structure



## Specification

Item	Model	SMUB5000	SMUB7000
Fluid		Air	
Pressure range	kgf/cm <sup>2</sup> (kPa)	1.5 ~ 7 ( 150 ~ 700 )	
Ambient and fluid temperature	℃	5 ~ 60	
Pilot type		Pilot operated	
Number of positions		3/2-position	
Type of actuation		Normally closed/ Normally open	
Effective orifice	mm <sup>2</sup> (CV)	3.06 (0.17)	11.7 (0.65)
Manual override		Push and lock	
Port size		M5, Rc 1/8	Rc 1/8, Rc 1/4
Lubrication		Lubrication free type	

## Code of order

**SMUB** - **5** - **10** - **1** - **NC** - **110** - **L** - **M** **2**

Model	Model number	Coil q'ty	Port size	Valve type	Voltage	Electrical entry	Manifold																													
SMUB : 3 port 2-position Solenoid valve	5: 5000 series 7: 7000 series	10 : Single	<table border="1"> <thead> <tr> <th colspan="3">Thread type</th> </tr> <tr> <th>Mark</th> <th>Thread</th> <th>Model</th> </tr> </thead> <tbody> <tr> <td>M5</td> <td>M5x0.8p</td> <td>SMUB5000</td> </tr> <tr> <td>1</td> <td>Rc 1/8</td> <td rowspan="2">SMUB7000</td> </tr> <tr> <td>1</td> <td>Rc 1/8"</td> </tr> <tr> <td>2</td> <td>Rc 1/4</td> <td></td> </tr> </tbody> </table> <p>For A port connection</p> <table border="1"> <tbody> <tr> <td>1</td> <td>Rc 1/8</td> <td>SMUB5000</td> </tr> <tr> <td>2</td> <td>Rc 1/4</td> <td>SMUB7000</td> </tr> </tbody> </table>	Thread type			Mark	Thread	Model	M5	M5x0.8p	SMUB5000	1	Rc 1/8	SMUB7000	1	Rc 1/8"	2	Rc 1/4		1	Rc 1/8	SMUB5000	2	Rc 1/4	SMUB7000	<table border="1"> <thead> <tr> <th>Mark</th> <th>Model</th> </tr> </thead> <tbody> <tr> <td>NC</td> <td>Normally closed</td> </tr> <tr> <td>NO</td> <td>Normally open</td> </tr> </tbody> </table>	Mark	Model	NC	Normally closed	NO	Normally open	Standard : 12V DC 1.5W 24V DC 1.5W 110V AC 0.9VA 220V AC 1.8VA	(With wire length 300mm) (With wire length 300mm) (With wire length 300mm) Grommet (With wire length 300mm) 	M4 None : Without manifold M1 = 1 set M2 = 2 sets M3 = 3 sets ..... M20 = 20 sets
Thread type																																				
Mark	Thread	Model																																		
M5	M5x0.8p	SMUB5000																																		
1	Rc 1/8	SMUB7000																																		
1	Rc 1/8"																																			
2	Rc 1/4																																			
1	Rc 1/8	SMUB5000																																		
2	Rc 1/4	SMUB7000																																		
Mark	Model																																			
NC	Normally closed																																			
NO	Normally open																																			

DIN Terminal  
(L, T, and W type auxiliary wires are 300mm long and there is no A1 (110V)-K specification.)

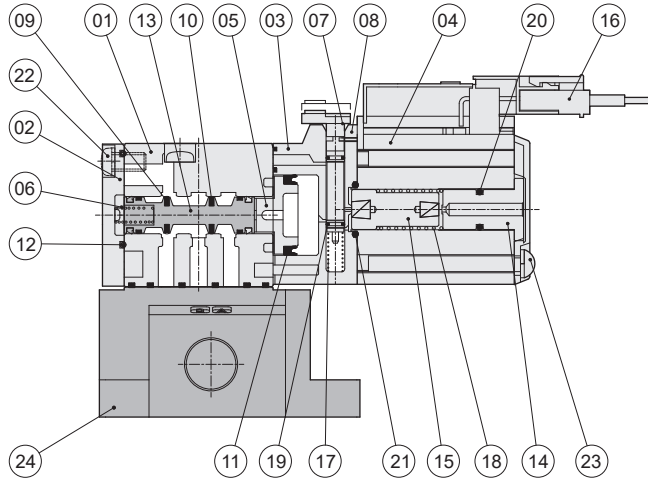
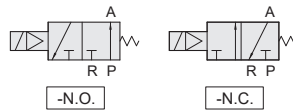
# SMUB series 3/2 Base Mounted Solenoid Valve

## Product features

CHELIC

### Internal structure

- 3 port 2-position single



### Components and Material list

No.	Item	Material	No.	Item	Material
01	Main body	Aluminum alloy	13	Shaft	Aluminum alloy
02	Rear cover	Resin	14	Coil insert bushing	Stainless steel
03	Holder	Resin	15	Spring bushing	Stainless steel
04	Coil	—	16	Wire plug	Resin
05	Holder piston	POM	17	Manual override spring	Stainless steel
06	Rear cover spring	Stainless steel	18	Spring bushing spring	Stainless steel
07	Manual override	POM	19	Manual override O-Ring	NBR
08	Position iron plate	Iron	20	Coil insert bushing O-ring	NBR
09	Spool packing	NBR	21	O-Ring	NBR
10	Spool packing	NBR	22	Rear screw	Alloy steel
11	Holder piston packing	NBR	23	Coil cover screw	Alloy steel
12	Rear cover O-ring	NBR	24	Single sub-plate	Aluminum alloy

Note: The main body has been treated with painting.

### Packing and O-Ring material list

Item	Holder piston packing	Rear cover packing	Manual rod O-Ring	Coil insert bushing O-ring
<b>Model</b>	<b>Quantity</b>	1	1	1
SMUB 5000	MYA-10	MYA-7	∅2x∅0.6	∅4.6x∅1
SMUB 7000	MYA-11	MYA-7	∅2x∅0.6	∅4.6x∅1

Note: Piston packing and rod packing all adopt import parts ( MITSUBISHI, SAKAGAH, and same grade ).

ISO

SRU

SRUB

SMU

SMUB

SKU

SKB

SKV

SV310

SWB

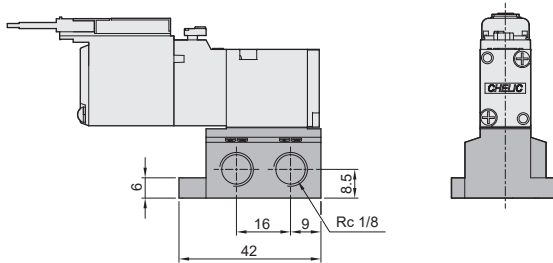
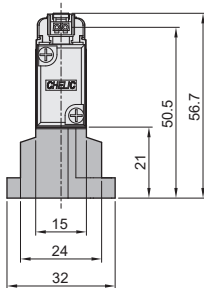
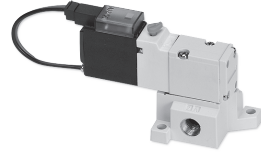
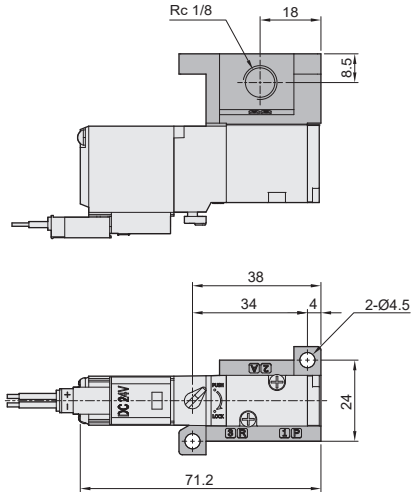
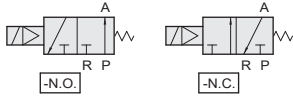
# SMUB 500 series 3/2 Base Mounted Solenoid Valve

Dimensions/ Base mount type

**CHELIC**

## SMUB 5101 - □

Single exhausting sub-plate  
3 port 2-position single

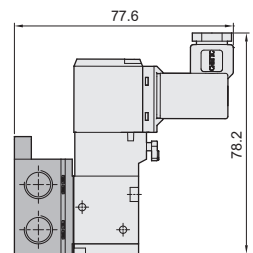
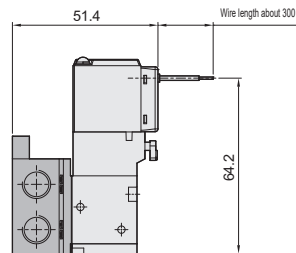
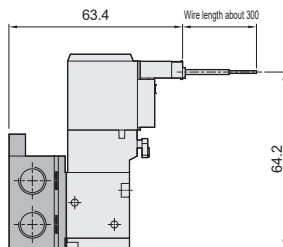
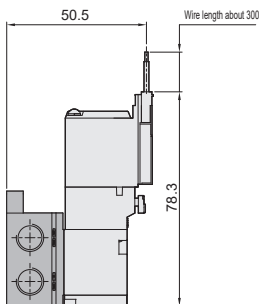


## L wire type - □

## T wire type - □

## W wire type - □

## K wire type - □



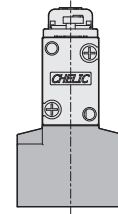
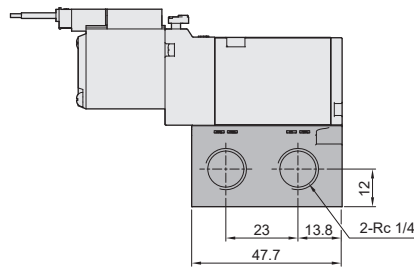
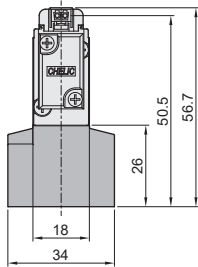
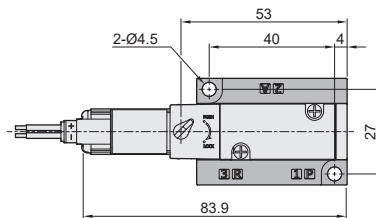
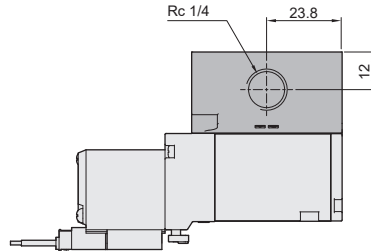
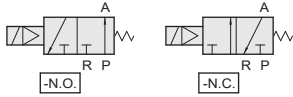
# SMUB 700 series 3/2 Base Mounted Solenoid Valve

Dimensions/ Base mount type

CHELIC

## SMUB 7102 - □

Single exhausting sub-plate  
3 port 2-position single

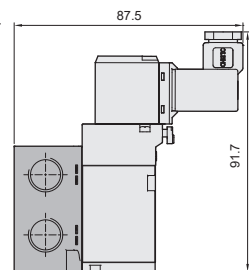
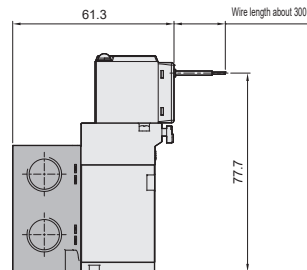
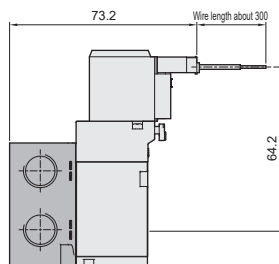
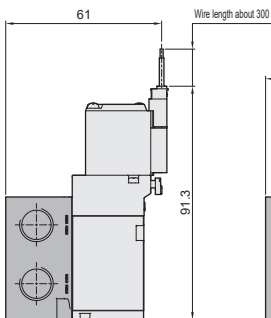


## L wire type - □

## T wire type - □

## W wire type - □

## K wire type - □



ISO

SRU

SRUB

SMU

SMUB

SKU

SKB

SKV

SV310

SWB

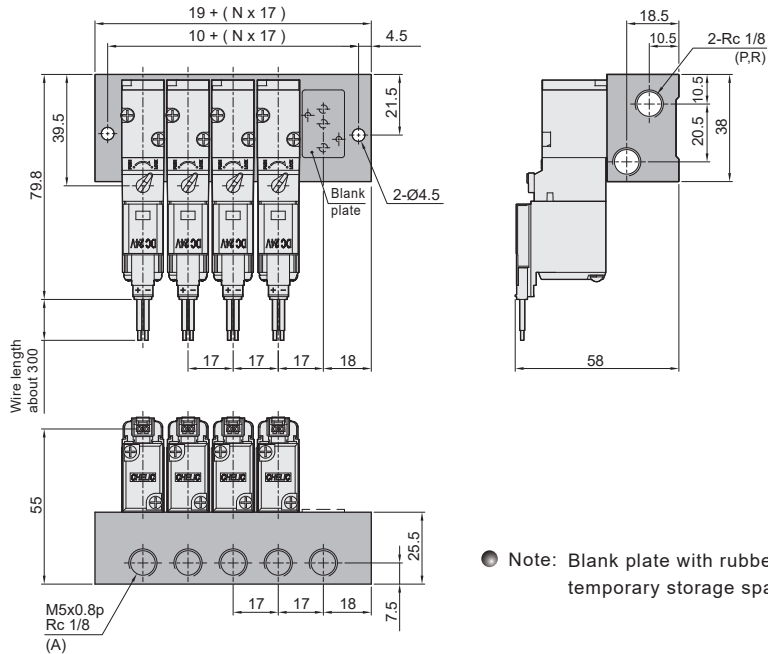
# SMUB series 3/2 Base Mounted Solenoid Valve

## Dimensions/ Manifold type

CHELIC

### SMUB 5000 series

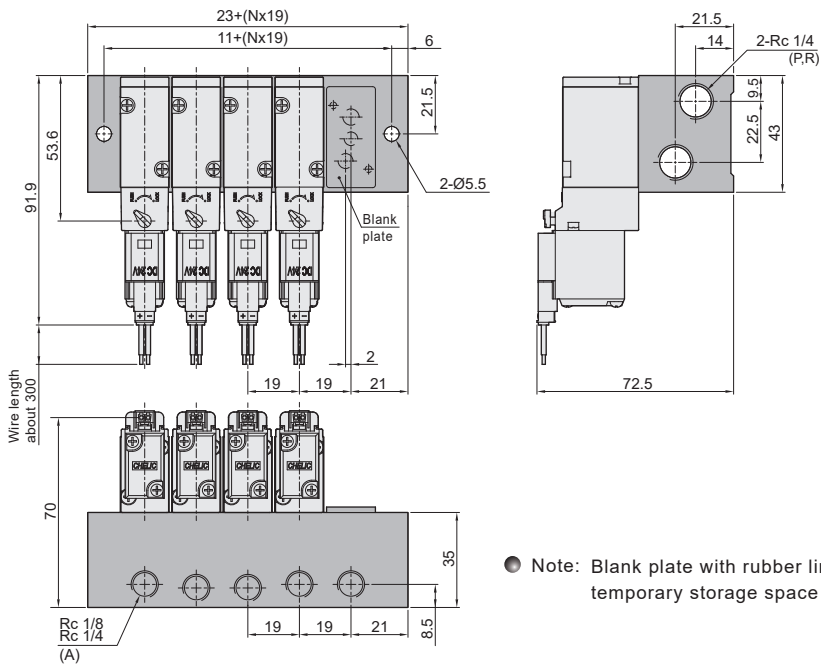
Exhaust manifold dimension



Note: Blank plate with rubber lining is reserved for temporary storage space of solenoid valves.

### SMUB 7000 series

Exhaust manifold dimension



Note: Blank plate with rubber lining is reserved for temporary storage space of solenoid valves.

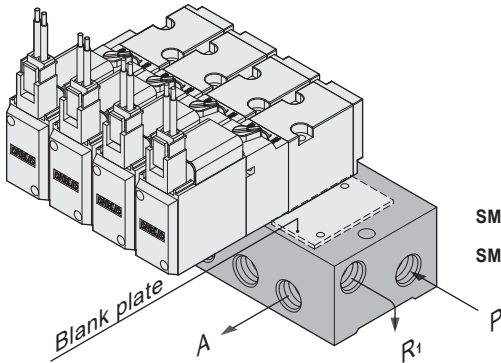
# SMUB series 3/2 Base Mounted Solenoid Valve

Accessories/ Installation

CHELIC

## Manifold

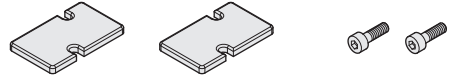
SMUB - 5000 • 7000 series



## Manifold accessory

SMUB - 5000 • 7000 series

※ The accessories of blank plate.



### Blank plate

### Rubber lining

### Mounting screw

SMUB-5000 series

MSMUB05041

MSMUB05039

M2.6X6.5L MSMUB05040

SMUB-7000 series

MSMUB07041

MSMUB07039

M3X8L MSMUB07040

ISO

SRU

SRUB

SMU

SMUB

SKU

SKB

SKV

SV310

SWB

With indicator light: all this series with indicator light and voltage protection circuit

