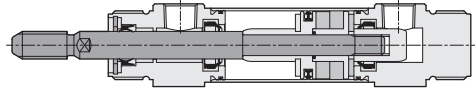


SDX series Standard Cylinder (Stainless Steel Tube)

Product features

CHELIC

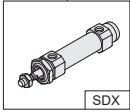
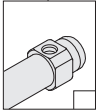
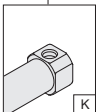
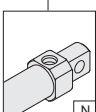
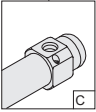
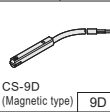
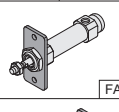
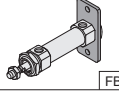
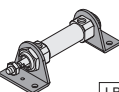
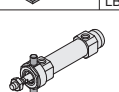
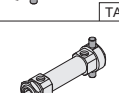
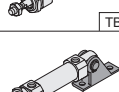
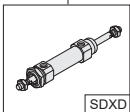
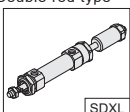
Internal structure



Specification

Item	Bore size (mm)	Ø20	Ø25	Ø32	Ø40
Action		Double acting			
Fluid		Air			
Pressure range	Kgf/cm ² (kPa)	1 ~ 7 (100 ~ 700)			
Ambient and fluid temperature	°C	- 10 ~ 60			
Piston speed	mm/s	50 ~ 700			
Cushion		Rubber washer/ Air cushioning			
Lubrication		Lubrication free type			
Port size		PT 1/8			PT 1/4
Sensing device		With magnet			
Standard stroke	mm	25, 50, 75, 100, 125, 150, 200, 250, 300			

Code of order

SDX	25	150		C	9D	20S	2	FA										
Model	Bore size	Stroke	Head cover shape	Cushion	Sensor switch	Mounting bracket	Sensor/ Bracket q'ty	Mounting type										
 <p>SDX: Standard</p>	20-Ø20 mm 25-Ø25 mm 32-Ø32 mm 40-Ø40 mm	25-25 mm 50-50 mm 75-75 mm 100-100 mm 125-125 mm 150-150 mm 200-200 mm 250-250 mm 300-300 mm	 None: Standard  K: Short head  N: Mounting type	 None: No cushion C: With cushion	 CS-9D (Magnetic type) 9D None: Standard	<table border="1"> <thead> <tr> <th>Mark</th> <th>Cylinder (inner dia.)</th> </tr> </thead> <tbody> <tr> <td>20S</td> <td>Ø20</td> </tr> <tr> <td>25S</td> <td>Ø25</td> </tr> <tr> <td>32S</td> <td>Ø32</td> </tr> <tr> <td>40S</td> <td>Ø40</td> </tr> </tbody> </table>	Mark	Cylinder (inner dia.)	20S	Ø20	25S	Ø25	32S	Ø32	40S	Ø40	1 : 1 PC 2 : 2 PC	 FA  FB  LB  TA  TB  CB
Mark	Cylinder (inner dia.)																	
20S	Ø20																	
25S	Ø25																	
32S	Ø32																	
40S	Ø40																	
 <p>SDXD: Double rod type</p>		※Refer to standard stroke table																
 <p>SDXL: Adjustable stroke Cylinder</p>																		

FA: Front flange
 FB: Rear flange
 LB: Double foot
 TA: Central trunnion
 TB: Rear trunnion
 CB: Clevis

SBA

SDA

SDX

DBS2

DBF2

DBT

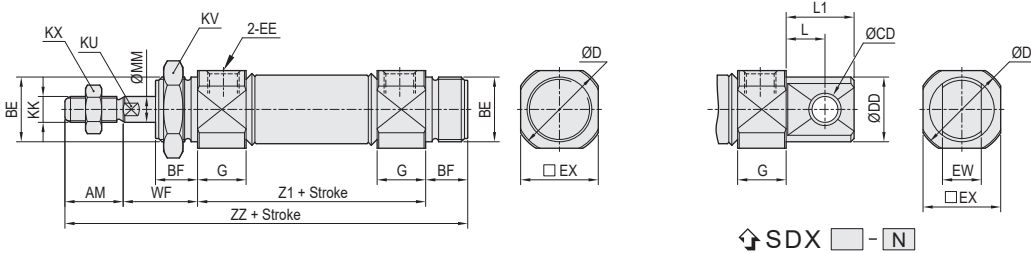
FDA

SDX series Standard Cylinder (Stainless Steel Tube)

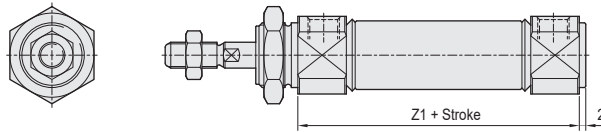
Dimensions

CHELIC

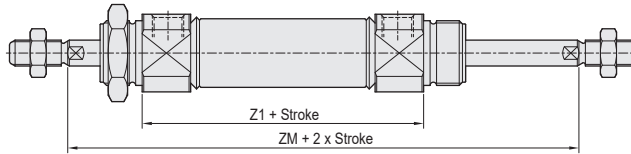
Standard (Double acting) – SDX



SDX [] - [] K



SDXD – Double rod type (Double acting)

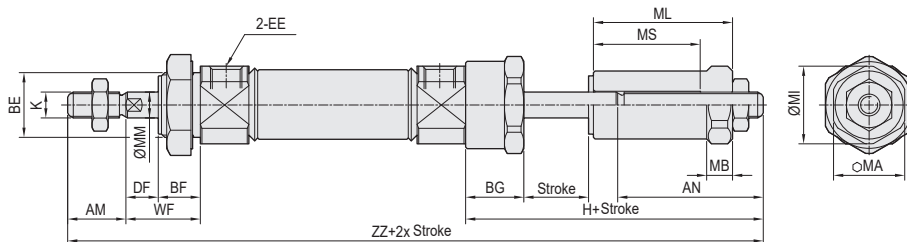


Unit: mm

Bore size	AM	BE	BF	CD	D	DD	EE	EX	EW	G	KK	KU	KV	KX	L	L1	MM	WF	Z1	ZM	ZZ
Ø20	18	M20x1.5P	13	8	28	20	PT1/8	24	12	15	M8x1.25P	7	27	14	12	21	8	23	62	108	116
Ø25	22	M26x1.5P	13	8	33.5	22	PT1/8	30	12	15	M10x1.25P	9	32	17	12	21	10	23	62	108	120
Ø32	22	M26x1.5P	13	10	37.5	27	PT1/8	34.5	20	15	M10x1.25P	10	32	17	15	27	12	23	64	110	122
Ø40	24	M32x2.0P	16	10	46.5	33	PT1/4	42.5	20	21.5	M14x1.5P	14	41	22	15	27	16	26	88	140	154

SDXL – Adjustable stroke type ● A:25mm

● B:50mm



Unit: mm

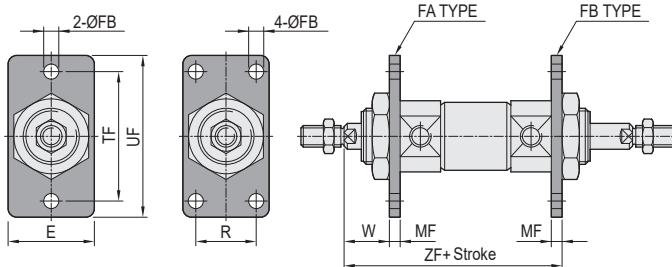
Bore size	AN		AM	BE	BF	BG	DF	EE	H		KK	MA	MB	MI	ML		MM	MS		WF	ZZ	
	A	B							A	B					A	B		A	B		A	B
Ø20	44	69	18	M20x1.5P	13	18	10	PT 1/8	71	96	M8x1.25P	22	8	24	43	68	8	33	58	23	174	199
Ø25	46	71	22	M26x1.5P	13	18	10	PT 1/8	74	99	M10x1.25P	22	8	24	45	70	10	35	60	23	181	206
Ø32	49	74	22	M26x1.5P	13	18	10	PT 1/8	77	102	M10x1.25P	27	10	29	47	72	12	35	60	23	186	211
Ø40	50	75	24	M32x2.0P	16	21	10	PT 1/4	81	106	M14x1.5P	32	10	35	47	72	16	35	62	26	219	244

SDX series Standard Cylinder (Stainless Steel Tube)

Bracket dimensions

CHELIC

Front or rear flange — FA FB



● Ø20 ~ Ø32 ● Ø40



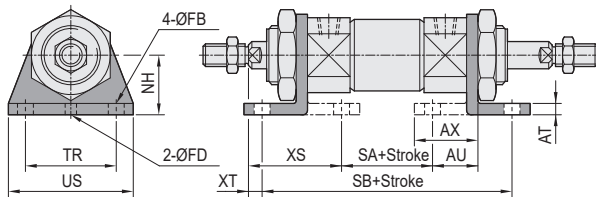
SDX □ FA
SDX □ FB

Unit : mm

Bore size	E	FB	MF	R	TF	UF
Ø20	34	7	4	—	60	75
Ø25	40	7	4	—	60	75
Ø32	40	7	4	—	60	75
Ø40	52	7	5	36	66	82

	W	ZF			
Ø20	19	89			
Ø25	19	89			
Ø32	19	91			
Ø40	21	119			

Double foot for both front and rear — LB



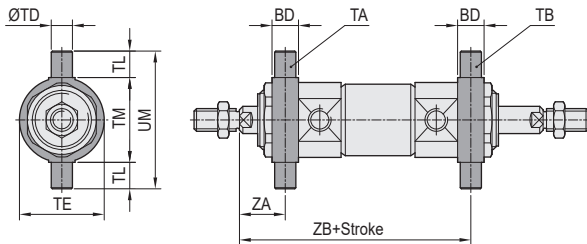
SDX □ LB

Unit : mm

Bore size	AT	AU	AX	FB	FD	NH
Ø20	3.2	20	28	6.8	4	25
Ø25	3.2	20	28	6.8	4	28
Ø32	3.2	20	28	6.8	4	28
Ø40	3.2	23	33	7	4	30

	SA	SB	TR	US	XT	XS
Ø20	28.4	102	40	55	3	39.8
Ø25	28.4	102	40	55	3	39.8
Ø32	30.4	104	40	55	3	39.8
Ø40	48.4	134	55	75	3	45.8

Front or rear trunnion — TA TB



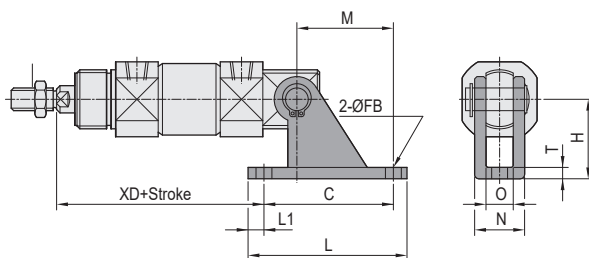
SDX □ TA
SDX □ TB

Unit : mm

Bore size	BD	TD	TE	TL	TM	UM
Ø20	10	8	32	10	32	52
Ø25	10	9	40	10	40	60
Ø32	10	9	40	10	40	60
Ø40	11	10	53	12	53	77

	ZA	ZB			
Ø20	18	90			
Ø25	18	90			
Ø32	18	92			
Ø40	20.5	119.5			

Clevis — CB



SDX □ CB

Unit : mm

Bore size	C	FB	H	L	L1	M
Ø20	45	6.8	30	59	7	30
Ø25	45	6.8	30	59	7	30
Ø32	55	9	40	75	10	40
Ø40	55	9	40	75	10	40

Bore size	N	O	T	XD		
Ø20	18.4	12	3.2	82		
Ø25	18.4	12	3.2	82		
Ø32	28	20	4	87		
Ø40	28	20	4	114		

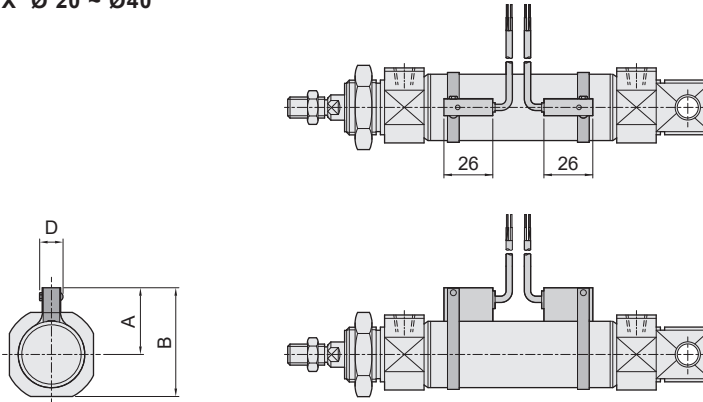
SDX series Standard Cylinder (Stainless Steel Tube)

Sensor switch operating range and the setting

CHELIC

☉ Sensor switch mounting type/ Dimension (Reference)

- SDX $\varnothing 20 \sim \varnothing 40$



Bore size (mm)	A	B	D	E
$\varnothing 20$	22.5	34.5	8	26
$\varnothing 25$	25	40	8	26
$\varnothing 32$	29	46.5	8	26
$\varnothing 40$	33	54	8	26

- Please install sensor at front and rear sides of cylinder, it is better to make same direction as line at easy visible position of indicator light.
- Electric wire is arranged following cylinder and fixed to avoid any pulling and dragging affecting the reception of signal.

☉ Sensing range

- Sensor switch is fixed on the cylinder body. The magnetic piston head will activate the Sensor switch when it enters the operating range. It has 0.5mm differential.

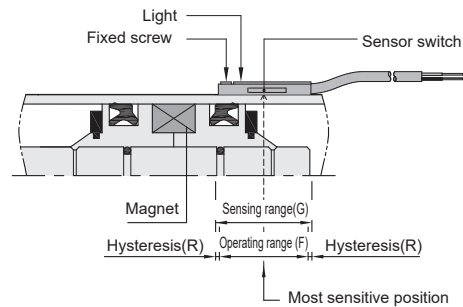
☉ Operating range

- When piston head moves the switch setting and adjustment will be based on the responding range generated by the magnetic field and the switch. (Please refer to the below table)

Unit: mm

Model	CS-9D	
Bore size	Operating range (F)	Hysteresis (R)
$\varnothing 20$	4	1
$\varnothing 25$	5	1
$\varnothing 32$	5.5	1
$\varnothing 40$	7	1

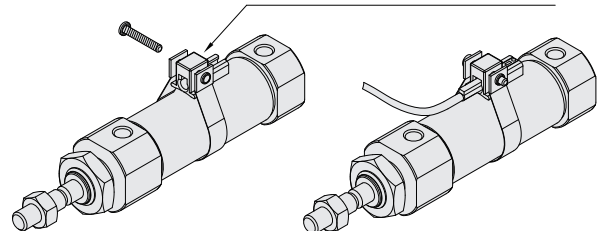
☉ Sensor switch setting and operating range



☉ Accessory and assembly (Stainless steel cylinder tube use)

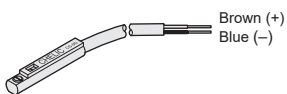
- CS-9D series-Applicable to round body cylinder

Round the metallic belt to the cylinder body with sensor switch like below images, then screw to the holder and tighten to prevent sensor switch fallen.



☉ Sensor switch introduction

- CS-9D



Voltage: DC 5 ~ 120 V
AC 5 ~ 120 V