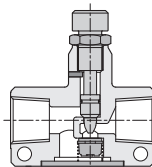
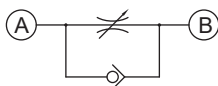
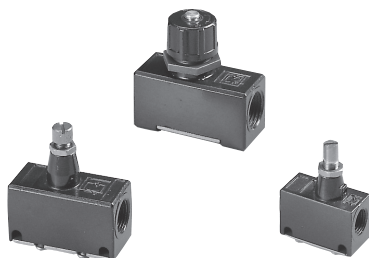


# SC series Speed Controller

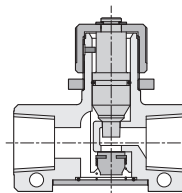
## Product features

CHELIC

### Internal structure



ASC - 150 series  
BSC - 300 series



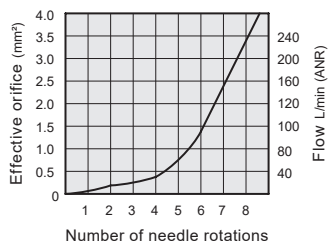
CSC - 400 series

### Specification

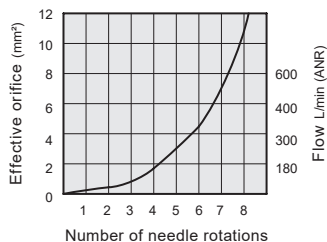
Item	Model	ASC-150-01(N)	ASC-150-02(N)	BSC-300-02(N)	BSC-300-03(N)	CSC-400-03	CSC-400-04
Fluid		Air					
Port size	Rc (PT)	1/8"	1/4"	1/4"	3/8"	3/8"	1/2"
Pressure range	kgf/cm <sup>2</sup> (kPa)	0.5 ~ 9 ( 50 ~ 900 )					
Max. service pressure	kgf/cm <sup>2</sup> (kPa)	9.5 ( 950 )					
Air flow	Controlled flow	240	240	800	800	1600	1600
	Free flow	320	320	800	800	1600	1600
Applicable bore size	mm	Ø12, Ø16, Ø20, Ø25, Ø32		Ø32, Ø40, Ø50, Ø63		Ø50, Ø63, Ø80, Ø100	

### Flow rate characteristic graph

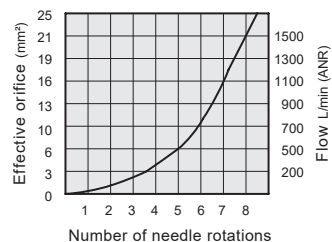
● ASC-150 (01, 02)



● BSC-300 (02, 03)



● CSC-400 (03, 04)



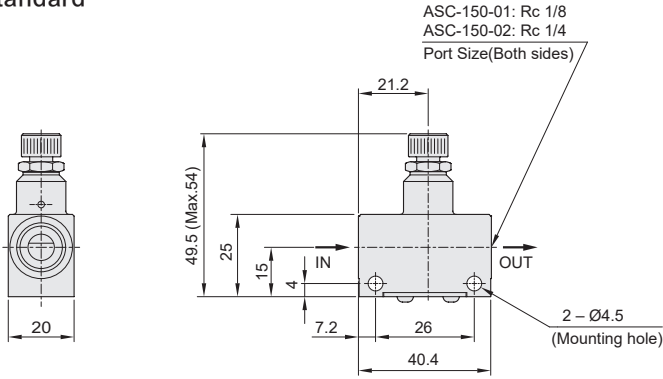
# SC series Speed Controller

## Dimensions

CHELIC

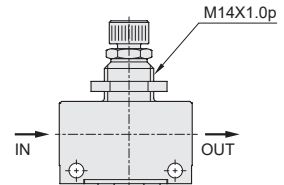
### ASC - 150 - 01 (02)

Standard



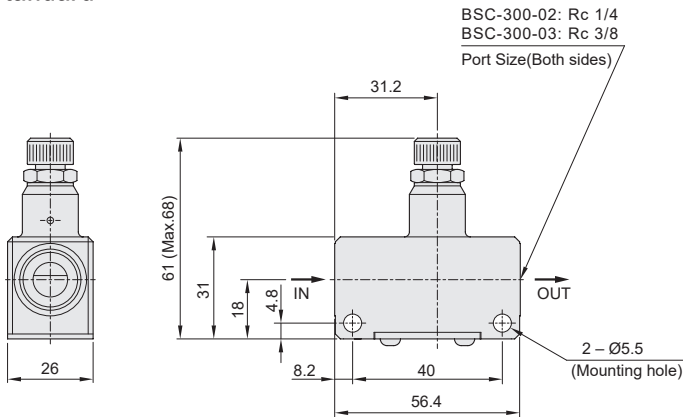
### ASC - 150 - 01 - N (02)

Panel mounting



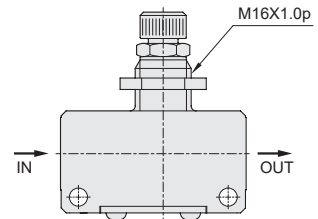
### BSC - 300 - 02 (03)

Standard



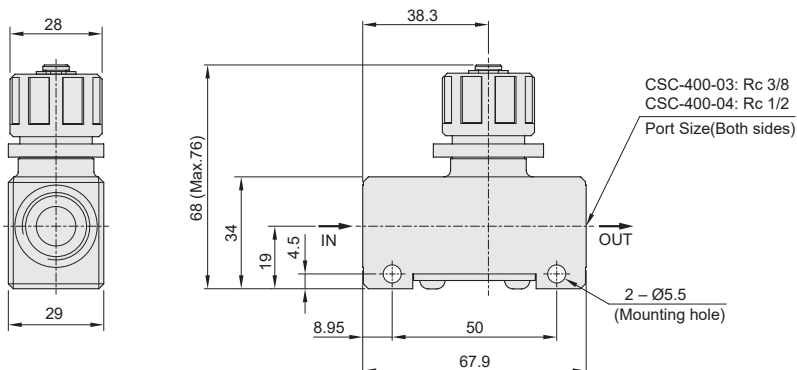
### BSC - 300 - 02 - N (03)

Panel mounting



### CSC - 400 - 03 (04)

Standard



SQ □

MSQ □

SP □

SQ □ J

SQR □

SQ □ G

RQL

M □

Stainless steel fitting

Brass Fitting

Full copper fitting

□ SC

QS □

QMC

QT

QH □

QV □

QST

PU Tube