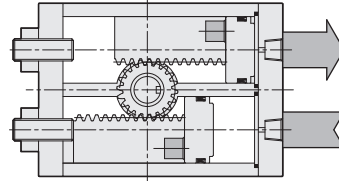
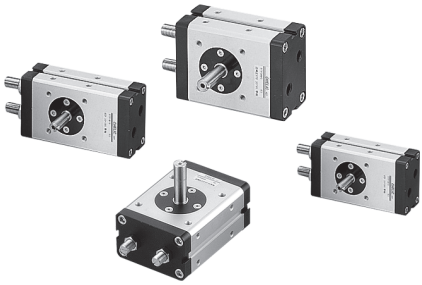


RTP series Rotary Actuator

Product features

CHELIC

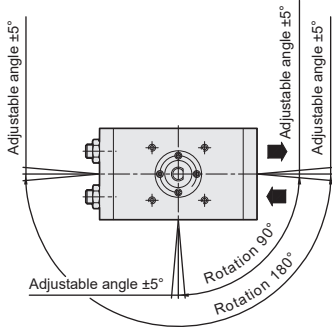
Internal structure



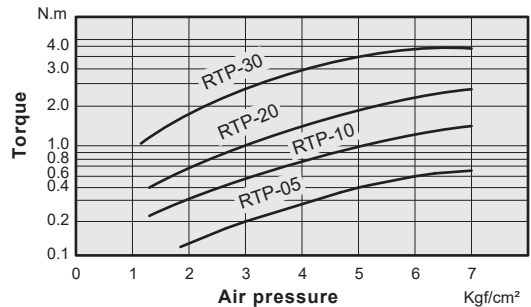
Specification

Item	Model	RTP05	RTP10	RTP20	RTP30
Action		Double acting			
Fluid		Air			
Torque force	N · m	0.38	0.88	1.86	2.94
Bore size	mm	Ø16	Ø20	Ø25	Ø30
Rotation angle	°	90, 180			
Adjustment angle	°	+5 ~ -30			
Prot size		PT 1/8			
Pressure range	Kgf/cm ² (kPa)	1.5~7(150~700)			
Ambient and fluid temperature	°C	0~50			

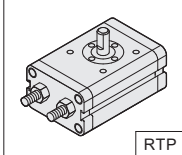
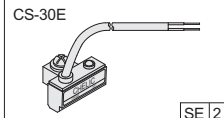
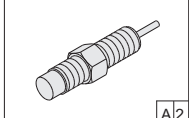
Rotation angle and Rotation range



Output characteristics



Code of order

RTP	10	×	180	-	2	D	-	SE	2	-	A	2
Model	Torque force		Rotation angle		Axis type			Sensor switch			Shock absorber	
	5 : 0.38 N · m 10 : 0.88 N · m 20 : 1.86 N · m 30 : 2.94 N · m		90 - 90° 180 - 180°		None: Single rod 2D: Double rod				SE 2			A 2

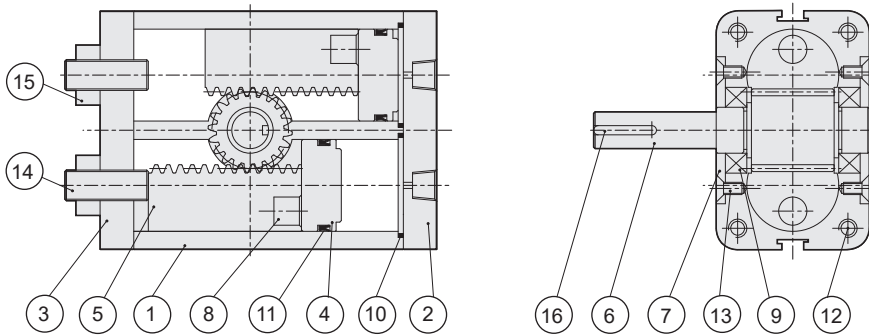
[SE] : Sensor switch mark (CS-30E) A: Shock absorber
 [SEN] : Sensor switch mark (CS-30EN) 1 = 1 PCS
 [SEP] : Sensor switch mark (CS-30EP) 2 = 2 PCS (option)
 [2] : Number of sensor switch 1 = 1 PCS

RTP series Rotary Actuator

Product features

CHELIC

Internal structure



Components and material list

No.	Item	Material	No.	Item	Material
01	Body	Aluminum alloy	09	Bearing	Bearing steel
02	Front cover	Aluminum alloy	10	Front cover O-ring	NBR
03	Rear cover	Aluminum alloy	11	Piston packing	NBR
04	Piston	Teflon	12	Cover screw	Alloy steel
05	Gear	POM	13	Shaft cover screw	Alloy steel
06	Gear shaft	Carbon steel	14	Adjustment bolt	Alloy steel
07	Shaft cover	Aluminum alloy	15	Nut	Carbon steel
08	Magnet	Rare earth metal	16	Key	Carbon steel

Packing and O-ring material list

Item	Piston packing	Cover O-ring
Quantity	2	2
Bore size(mm)		
Ø05	DYP - 05	16.8 x 1.3
Ø10	DYP - 10	20 x 1.6
Ø20	DYP - 20	25.7 x 1.78
Ø30	DYP - 30	30 x 2

Weight

Bore size	Weight (g)	
	90°	180°
RTP Ø05	320	377
RTP Ø10	426	519
RTP Ø20	665	803
RTP Ø30	1068	1462

RTM

RMF

RTB

RTBM

RTZB

RTP

RTH

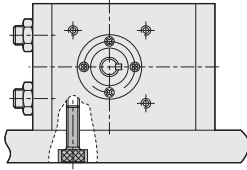
RTU

RTP series Rotary Actuator

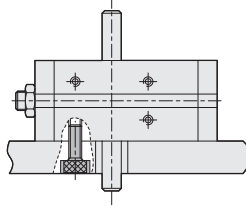
Mounting type, Dimensions

CHELIC

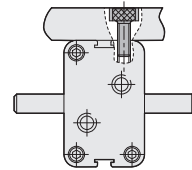
Mounting type



● Side mounting



● Bottom mounting



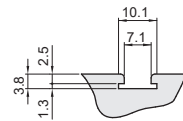
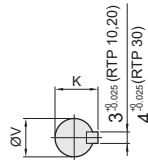
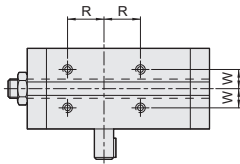
● Top mounting

External dimension

● RTP-5 Axis type

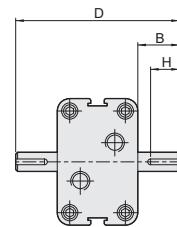
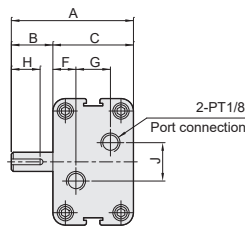
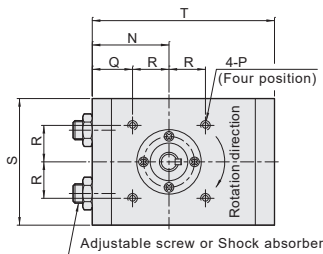
● RTP10~30 Axis type

● The groove of sensor switch



● Single axis type (Standard)

● Twin axis type(2D)



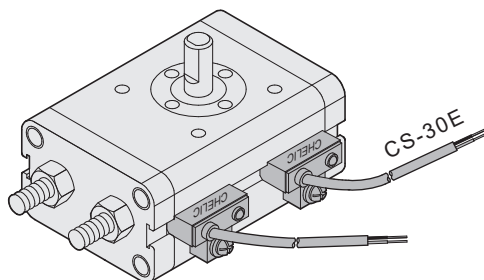
Model	A	B	C	D	F	G	H	J	K	N	P	Q	R	S	T	V	W
RTP05 - 90°	52	20	32	72	11	10	10	16	5.5	30.5	M5x0.8P, dp 7	14.5	16 ^{±0.1}	52	70	6 ^{h7}	8
RTP05 - 180°										35.5		19.5			86		
RTP10 - 90°	61	25	36	86	11	14	19	14	9.2	34.5	M5x0.8P, dp 7	17.5	17 ^{±0.1}	56	81	8 ^{h7}	9
RTP10 - 180°										44		27			103		
RTP20 - 90°	72	30	42	102	12	18	19	20	11.2	40	M5x0.8P, dp 7	21	19 ^{±0.1}	66	94	10 ^{h7}	10
RTP20 - 180°										52		33			120		
RTP30 - 90°	90	40	50	130	12	26	19	36	13.2	50	M6x1.0P, dp 8	22	28 ^{±0.1}	78	110	12 ^{h7}	15
RTP30 - 180°										71		43			150		

RTP series Rotary Actuator

Mounting type and operation of sensor switch

CHELIC

Sensor switch mounting type



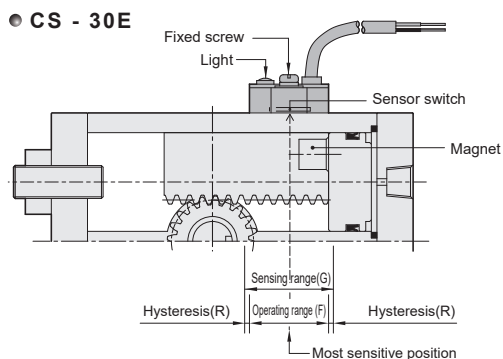
Sensing range

Sensor switch is fixed on the cylinder body. The magnetic piston head will activate the sensor switch when it enters the operating range. It has 0.5mm differential.

Operating range

When piston head moves the switch setting and adjustment will be based on the responding range generated by the magnetic field and the switch. (Please refer to the right table)

Sensor switch setting and operating range

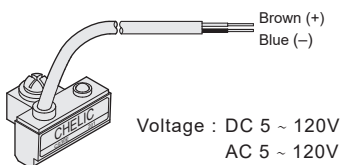


Unit: mm

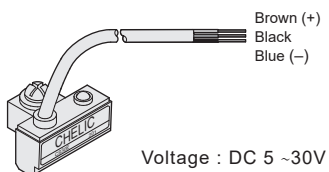
Model	CS-30E, CS-30EN(P)	
Bore size	Operating range(F)	Hysteresis(R)
RTP-05	10	1.5
RTP-10	8.5	1.0
RTP-20	7	1.0
RTP-30	8.5	1.0

Sensor switch introduction

CS-30E



CS-30EN(P)



RTM

RTF

RTB

RTBM

RTZB

RTP

RTH

RTU