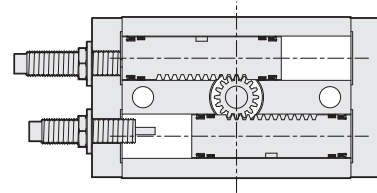


# RTB series Rotary Table

## Product features

CHELIC

### Internal structure

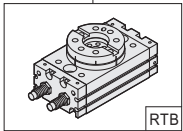


### Specification

Item	Model	RTB 3	RTB 7	RTB10	RTB20	RTB30	RTB50	RTB70	RTB100	RTB200	RTB300	RTB500
Action		Double acting										
Fluid		Air										
Torque	N · m	0.3	0.6	1.5	2.2	3.2	5.5	7.5	9.8	19	31	45
Bore size	mm	Ø10	Ø12	Ø15	Ø18	Ø20	Ø25	Ø28	Ø32	Ø40	Ø50	Ø63
Rotation angle	°	180										
Adjustable angle	°	0 ~ 190										
Port size		M3x0.5P		M5x0.8P			PT 1/8				PT 1/4	
Pressure range	Kgf/cm <sup>2</sup> (kPa)	1.5~7 (150~700)										
Ambient and fluid temperature	°C	0~50										
Allowable kinetic energy	Adjustment bolt	0.002	0.006	0.007	0.025	0.048	0.081	0.24	0.32	0.56	1	1.5
	Shock absorber	—	—	0.039	0.116	0.116	0.294	1.1	1.6	2.9	3.5	5.2

### Code of order

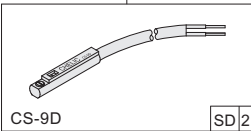
**RTB** (Model) — **10** (Torque force) — **SD** (Sensor switch) **2** — **A** (Shock absorber) **2**



RTB series  
Rotary cylinder

Torque force

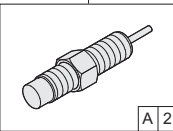
3	: 0.3 N·m
7	: 0.6 N·m
10	: 1.5 N·m
20	: 2.2 N·m
30	: 3.2 N·m
50	: 5.5 N·m
70	: 7.5 N·m
100	: 9.8 N·m
200	: 19 N·m
300	: 31 N·m
500	: 49 N·m



CS-9D

SD 2

SD: Sensor switch mark (CS-9D)  
 SB: Sensor switch mark (CS-9B)  
 SH: Sensor switch mark (CS-9H)  
 SDN: Sensor switch mark (CS-9DNPN)  
 SDP: Sensor switch mark (CS-9DPNP)



A 2

A: Shock absorber  
 1 = 1 pcs  
 2 = 2 pcs (option)

※ For AC&DC - 5~240V Voltage

2: Number of sensor switch  
 1 = 1 pcs Sensor switch  
 2 = 2 pcs Sensor switch (option)

### How to select shock absorbers

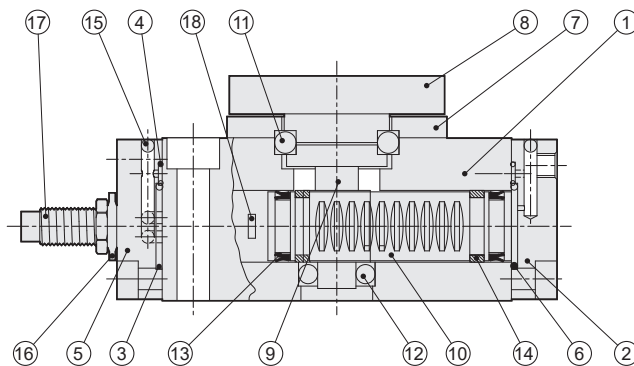
Model	Shock absorbers	Max. absorb ability
RTB-10	SAT-0806N	3 N·m
RTB-20	SAT-1007N	6 N·m
RTB-30	SAT-1007N	6 N·m
RTB-50	SAT-1412N	20 N·m
RTB-70	SAT-2015N	59 N·m
RTB-100	SAT-2015N	59 N·m
RTB-200	SAT-2725N	147 N·m
RTB-300	SAT-2725N	147 N·m
RTB-500	SAT-2725N	147 N·m

# RTB series Rotary Table

## Product features

CHELIC

### Internal structure



### Components and material list

No.	Item	Material	No.	Item	Material
01	Body	Aluminum alloy	10	Gear	Stainless steel
02	Rear cover	Aluminum alloy	11	Bearing	Bearing steel
03	Front cover O-ring	NBR	12	Bearing	Bearing steel
04	Vent O-ring	NBR	13	Piston packing	NBR
05	Front cover	Aluminum alloy	14	Wear ring	POM
06	Rear cover O-ring	NBR	15	Ball bearing	Alloy steel
07	Bearing cap	Aluminum alloy	16	Screw packing	Rubber
08	Dial scale	Aluminum alloy	17	Adjustment bolt	Alloy steel
09	Gear shaft	Alloy steel	18	Magnet	Rare earth metal

### Packing and O-ring material list

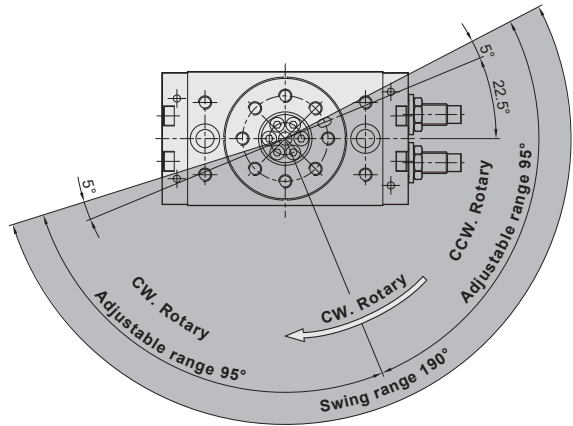
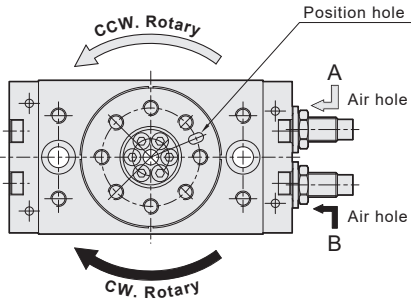
Item	Front cover O-ring	Rear cover O-ring	Vent O-ring	Piston packing
<b>Model</b>	<b>Quantity</b>	<b>2</b>	<b>2</b>	<b>4</b>
RTB-3	Ø8XØ1 (1 PCS)	Ø8XØ1 (1 PCS)	—	DYP-10
RTB-7	Ø10XØ1 (1 PCS)	Ø10XØ1 (1 PCS)	—	DYP-12
RTB-10	Ø15XØ1.45	Ø15XØ1.45	Ø2.9XØ1	DYP-15
RTB-20	Ø20XØ1.2	Ø20XØ1.2	Ø4XØ1	DYP-18
RTB-30	Ø20.8XØ2	Ø20.8XØ2	Ø4XØ1	DYP-20
RTB-50	Ø25.12XØ1.78	Ø25.12XØ1.78	Ø4XØ1	DYP-25
RTB-70	Ø28XØ2	Ø28XØ2	Ø6XØ1	Z8-2822
RTB-100	Ø33XØ1.5	Ø33XØ1.5	Ø6XØ1	Z8-3224
RTB-200	Ø41XØ1.78	Ø41XØ1.78	Ø12XØ1	Z8-4032
RTB-300	Ø50.52XØ1.78	Ø50.52XØ1.78	Ø12XØ1	Z8-5042
RTB-500	Ø63XØ2	Ø63XØ2	Ø12XØ1	Z8-6353

# RTB series Rotary Table

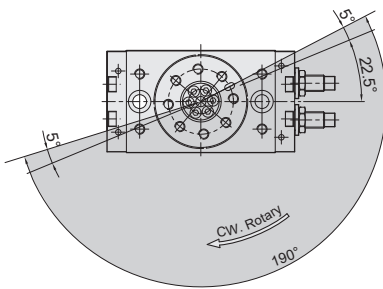
## Instructions

CHELIC

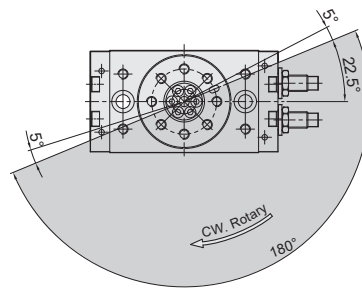
### Rotary direction and rotation angle



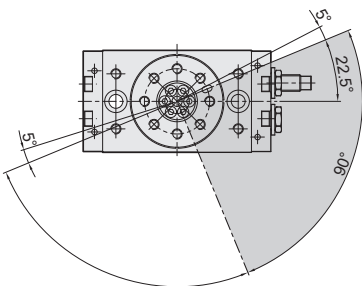
### Set of Rotation range



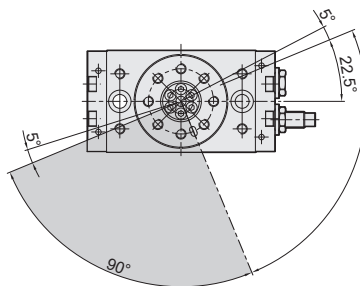
● 190° Swing rotation



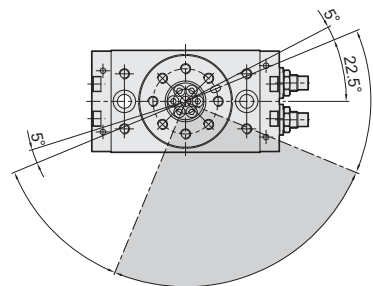
● 180° Swing rotation



● 90° Swing rotation



● 90° Swing rotation



● 90° Swing rotation

RTM

RMF

RTB

RTBM

RTZB

RTP

RTH

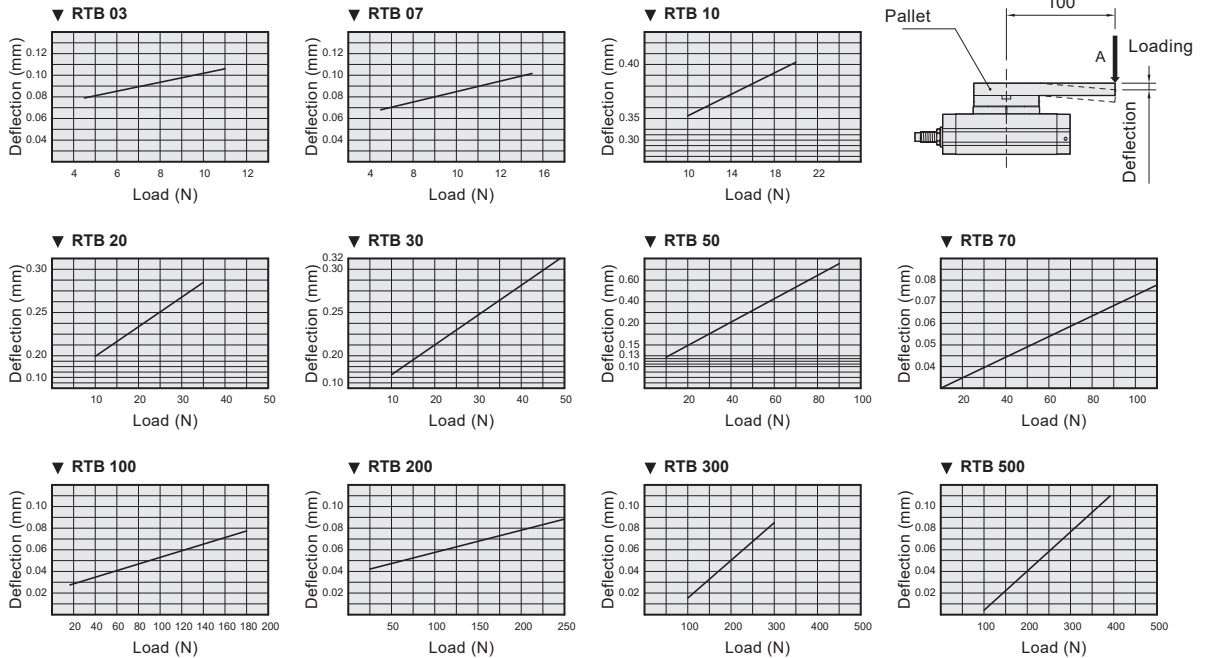
RTU

# RTB series Rotary Table

## Instructions

CHELIC

### Transverse load and Deflection



### Allowable load

Model	Loading way			Allowable torque (N.m)
	Side load (N)	Table load(N)		
		(a)	(b)	
RTB 3	33	48	48	1.1
RTB 7	54	71	71	1.5
RTB 10	70	78	74	2
RTB 20	140	130	130	3.5
RTB 30	185	188	358	4.8
RTB 50	300	285	442	9
RTB 70	333	296	476	12
RTB 100	390	493	706	18
RTB 200	543	740	1009	25
RTB 300	850	950	1500	30
RTB 500	1200	1400	2100	38

### Weight

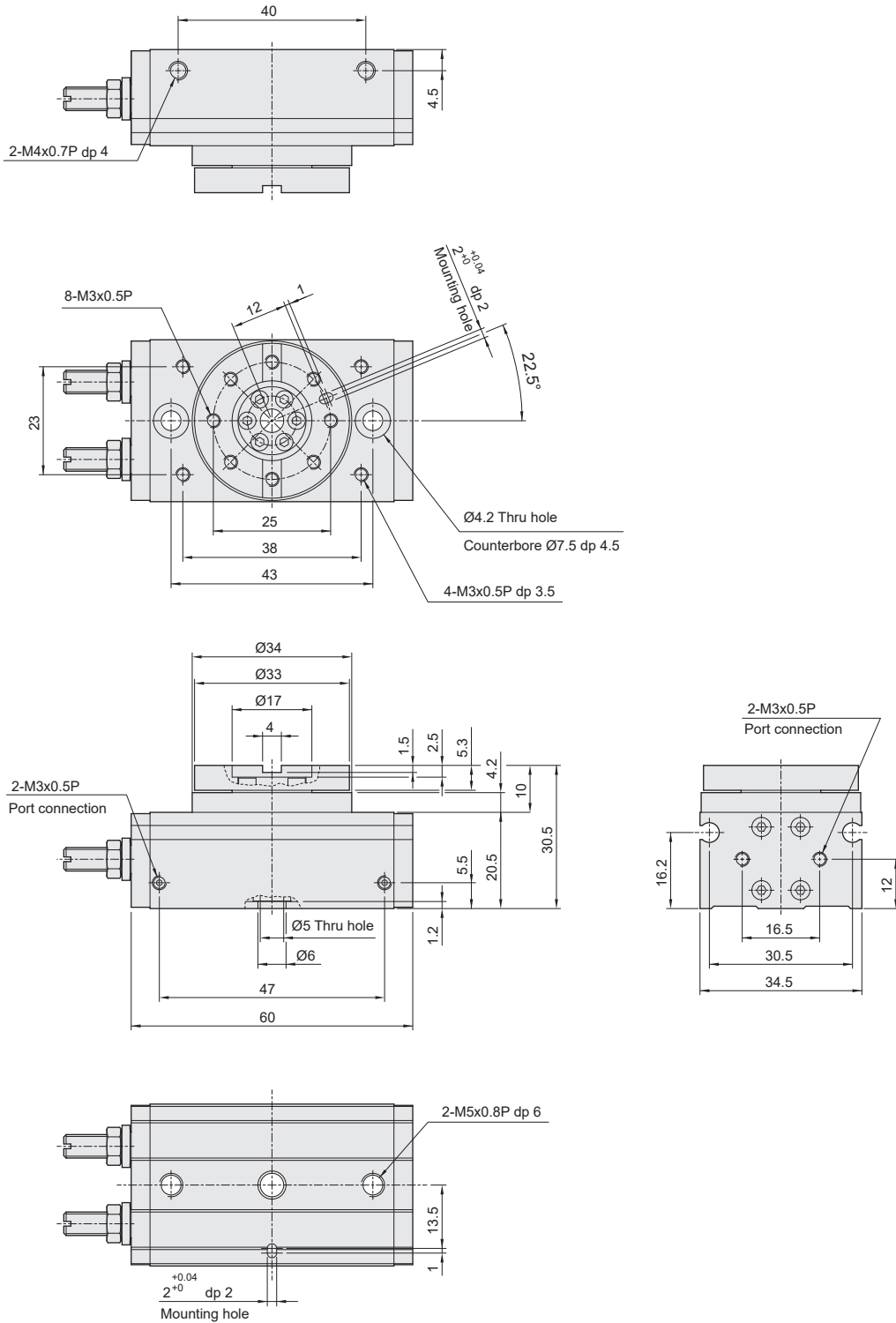
Model	RTB 3	RTB 7	RTB 10	RTB 20	RTB 30	RTB 50	RTB 70	RTB 100	RTB 200	RTB 300	RTB 500
Weight	150g	250g	530g	990g	1290g	2100g	2890g	4100g	7650g	8960g	11170g

# RTB series Rotary Table

## Dimensions

CHELIC

### RTB 3



RTM

RMF

RTB

RTBM

RTZB

RTP

RTH

RTU

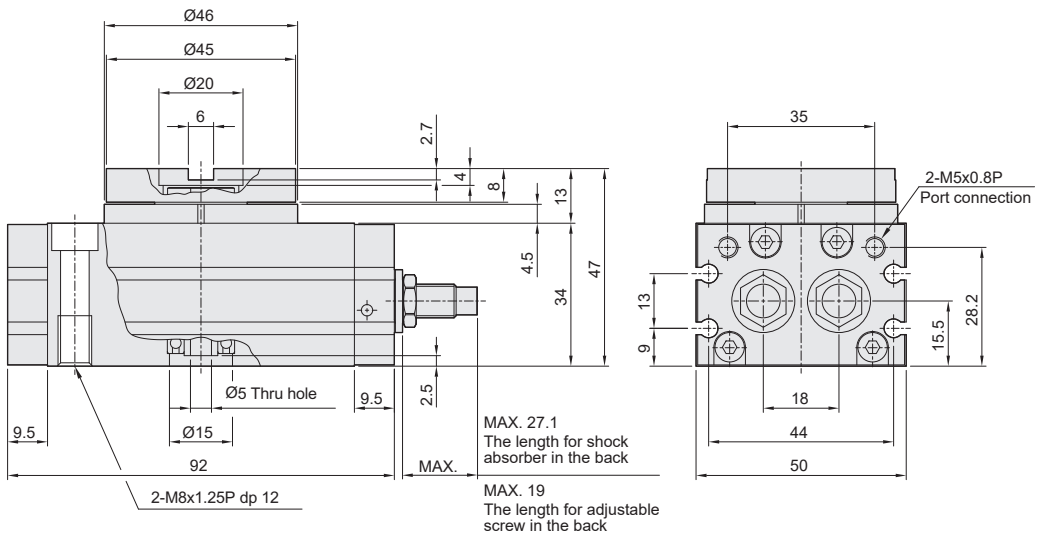
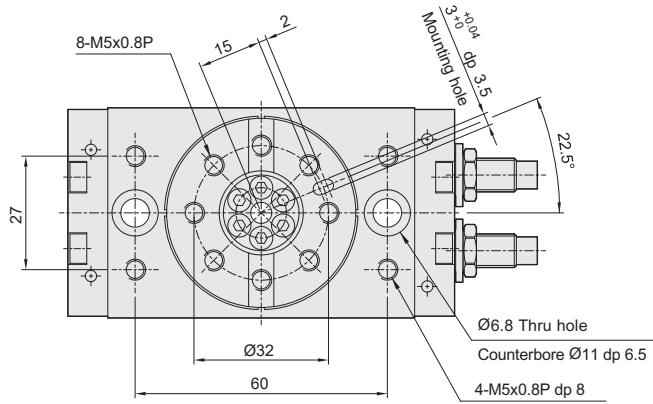


# RTB series Rotary Table

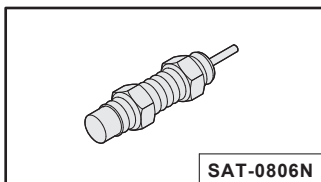
## Dimensions

CHELIC

### RTB 10



### ▼ Option/ Shock absorber



RTM

RMF

RTB

RTBM

RTZB

RTP

RTH

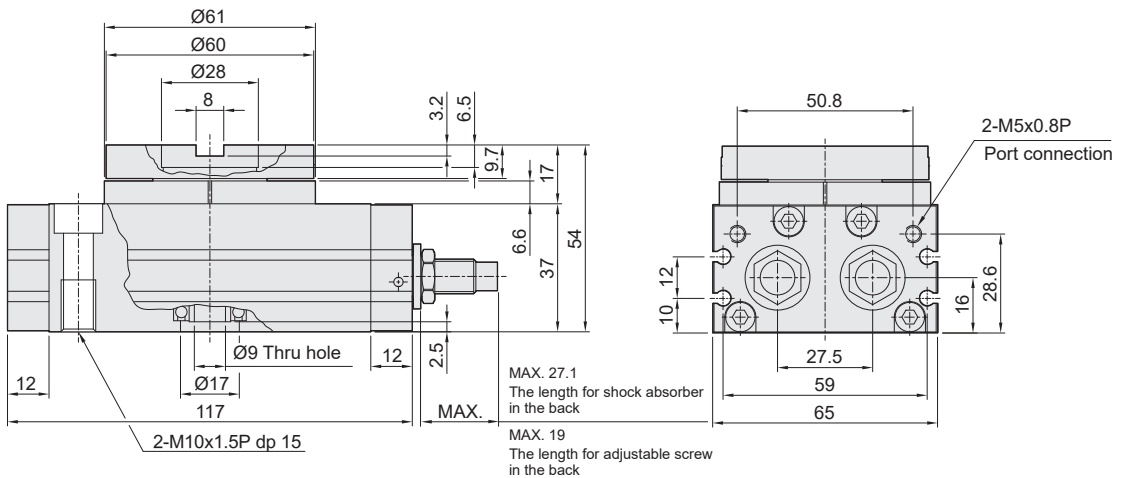
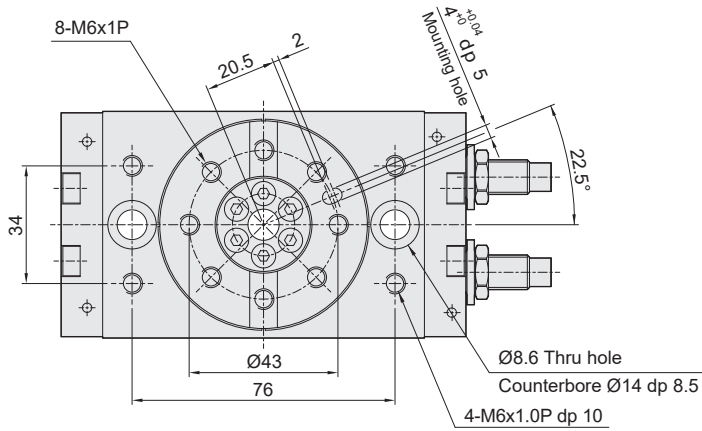
RTU

# RTB series Rotary Table

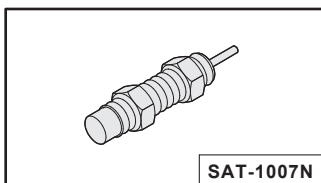
## Dimensions

CHELIC

### RTB 20



### ▼ Option/ Shock absorber



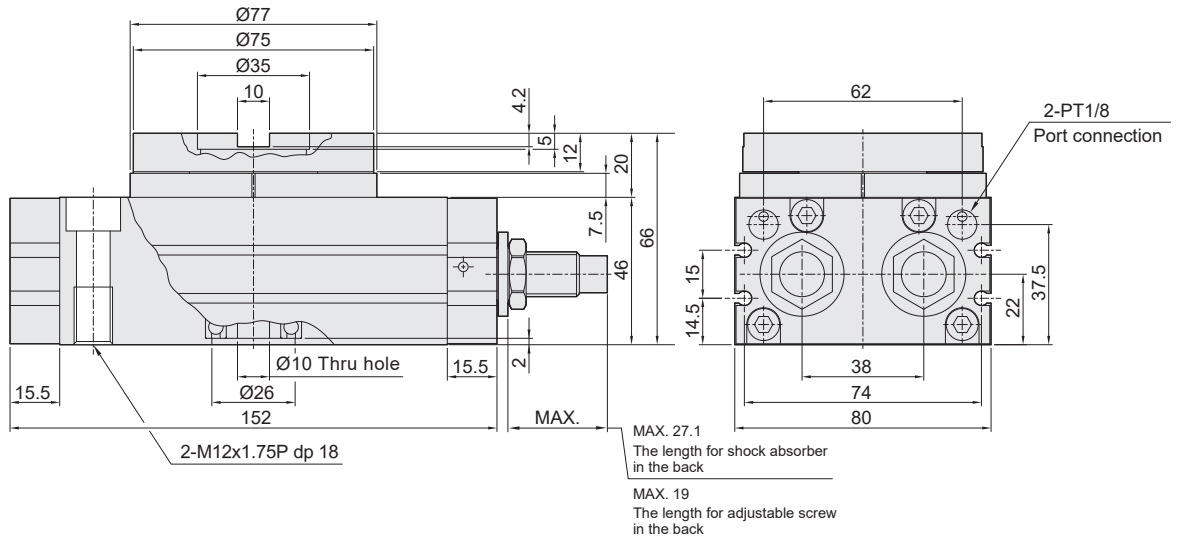
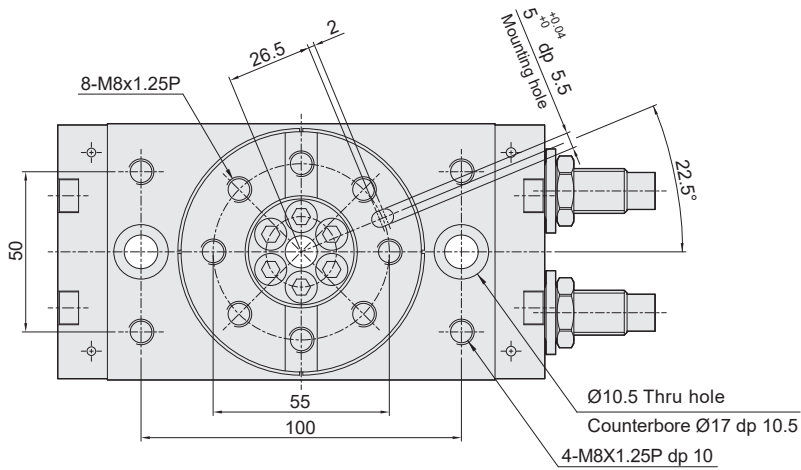


# RTB series Rotary Table

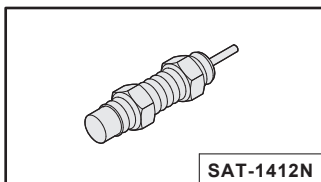
## Dimensions

CHELIC

### RTB 50



### ▼ Option/ Shock absorber



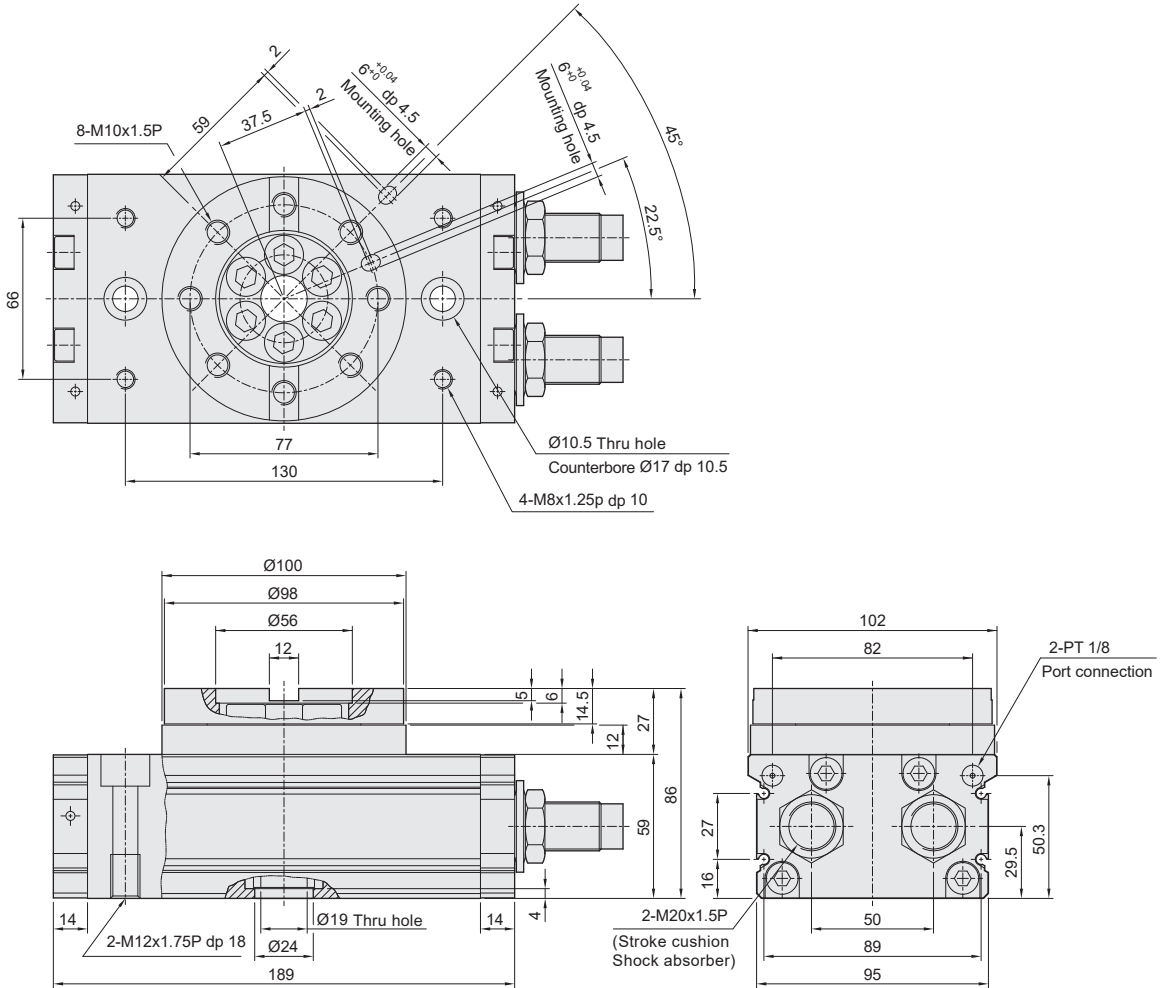


# RTB series Rotary Table

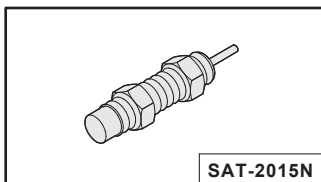
## Dimensions

CHELIC

### RTB 100



### ▼ Option/ Shock absorber

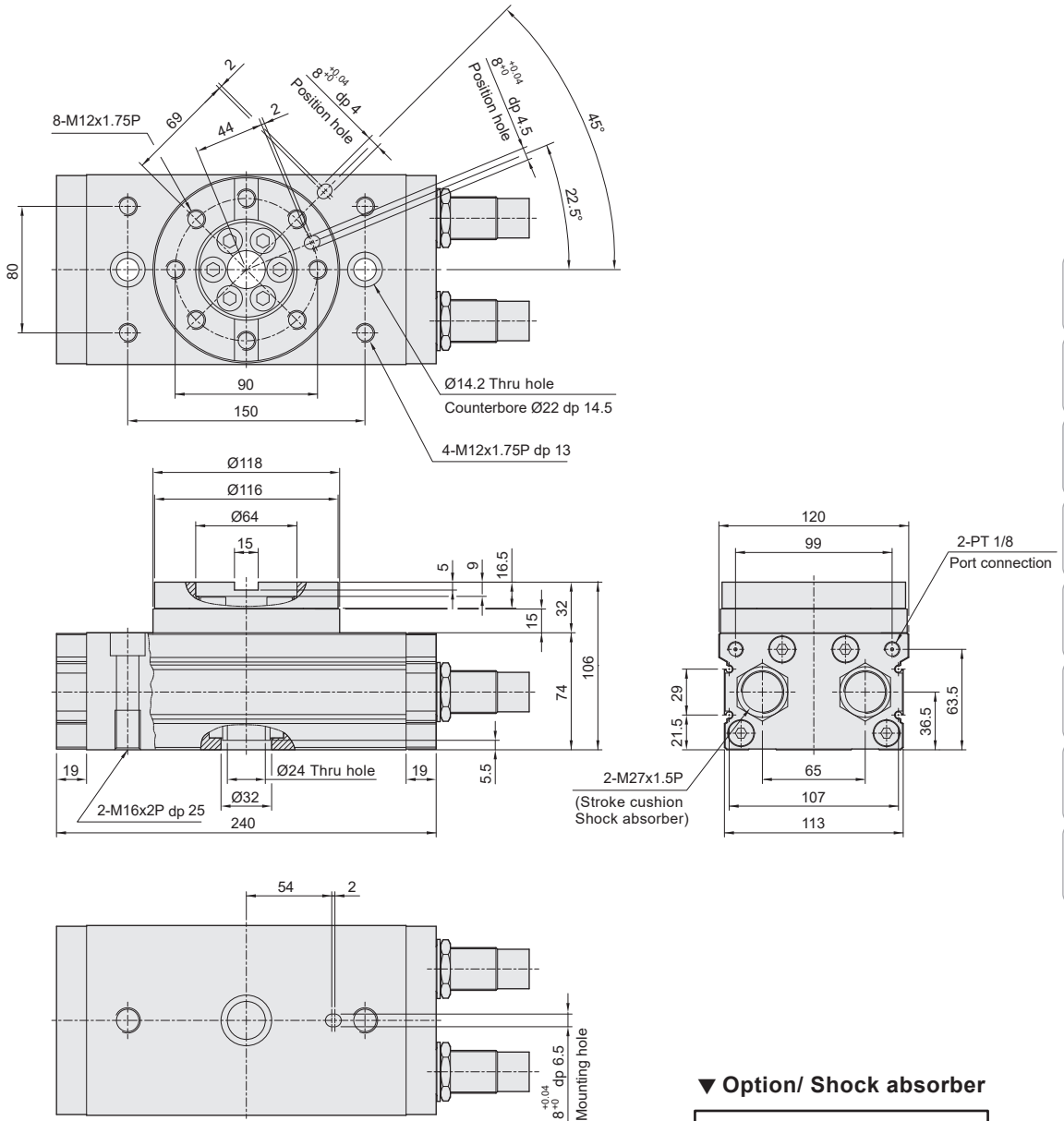


# RTB series Rotary Table

## Dimensions

CHELIC

### RTB 200



RTM

RMF

RTB

RTBM

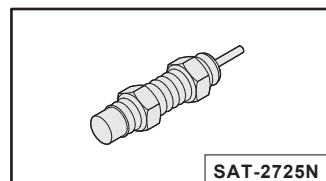
RTZB

RTP

RTH

RTU

### ▼ Option/ Shock absorber



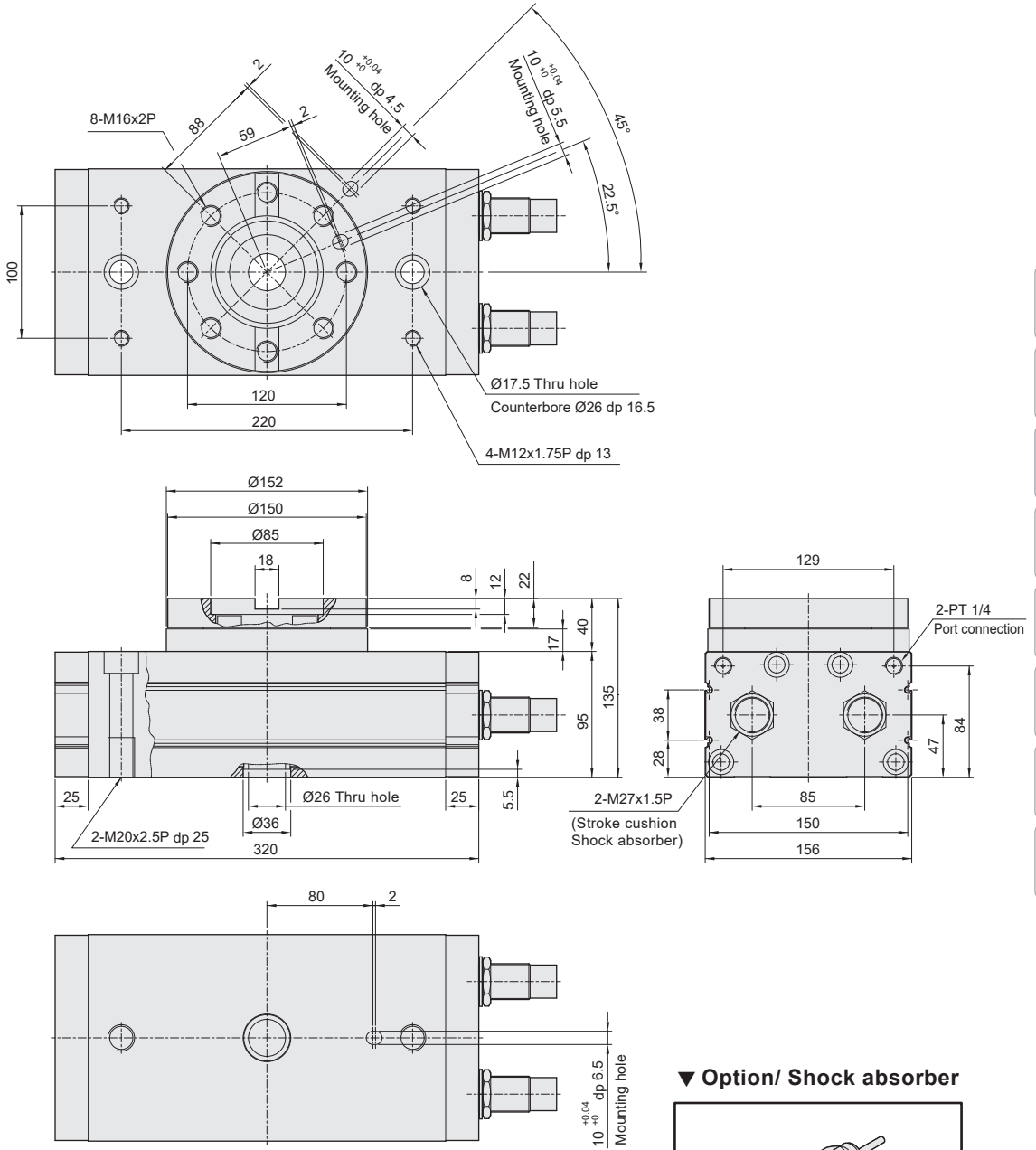


# RTB series Rotary Table

## Dimensions

CHELIC

### RTB 500



- RTM
- RTB
- RTBM
- RTBZB
- RTP
- RTH
- RTU

#### ▼ Option/ Shock absorber

