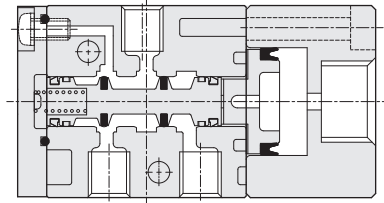
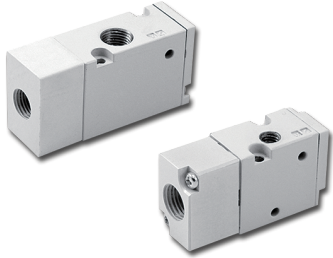


PMU series Air Operated Valve

Product features/ Code of order

CHELIC

Internal structure



Specification

Item	Model	PMU5000	PMU7000
Fluid		Air	
Pressure range	kgf/cm ² (kPa)	0 ~ 7 (0 ~ 700)	
Pilot pressure range	kgf/cm ² (kPa)	1.5 ~ 7 (150 ~ 700)	
Ambient and fluid temperature	°C	5 ~ 60	
Pilot type		Air operated	
Number of positions		3/2-position	
Type of actuation		Normally open, Normally closed	
Effective orifice	mm ² (CV)	2.16 (0.12)	12.6 (0.7)
Port size		M5	Rc1/8
Lubrication		Lubrication free type	

Code of order

PMU - **5** - **10** - **1** - **NC** - **M** **2**

Model	Model number	Coil q'ty	Port size			Type of actuation	Manifolds
PMU: 3/2-position Pilot valve	5: 5000 series 7: 7000 series	10: Single	Mark	Thread	Model	Mark	Type
			M5	M5x0.8p	PMU5000	NC	Normally open
			1	Rc 1/8	PMU7000	NO	Normally closed

For A port

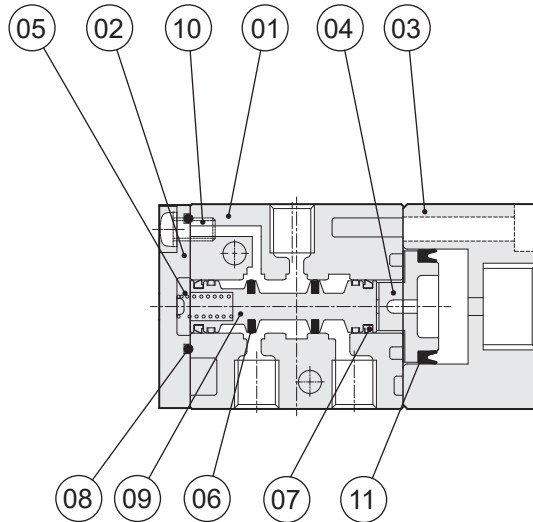
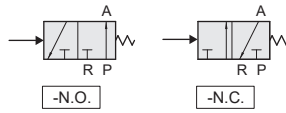
None:
Without manifold
M2 = 2 sets
M3 = 3 sets
⋮
M20 = 20 sets

PMU series Air Operated Valve

Product features

CHELIC

- 3 port 2-position single



PM

PMB

PMU

PMUB

PV

PN

Components and Material list

No.	Item	Material	No.	Item	Material
01	Body	Aluminum alloy	07	Spool packing	NBR
02	Rear cover	Aluminum alloy	08	Rear cover O-ring	NBR
03	Air pilot holder	Aluminum alloy	09	Shaft	Aluminum alloy
04	Holder piston	POM	10	Rear screw	Alloy steel
05	Rear cover spring	Stainless steel	11	Holder piston packing	NBR
06	Spool packing	NBR			

Note: The main body has been treated with painting.

Packing and O-Ring material list

Item	Holder piston packing	Rear cover packing
Model \ Quantity	1	1
PMU 5000	MYA-10	MYA-7
PMU 7000	MYA-11	MYA-7

Note: Piston packing and rod packing all adopt import parts (MITSUBISHI, SAKAGAH, and same grade).

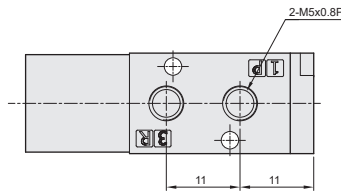
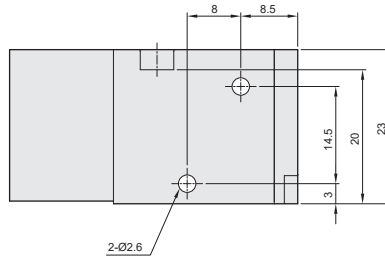
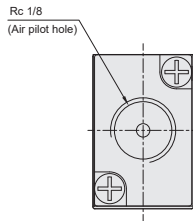
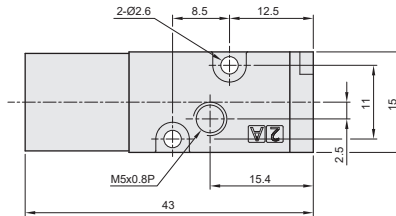
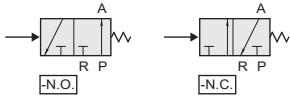
PMU 5000 series Air Operated Valve

Dimensions/ Standard

CHELIC

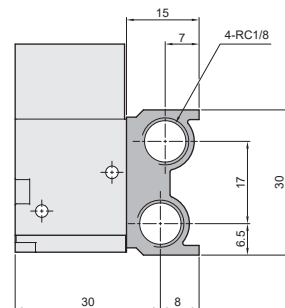
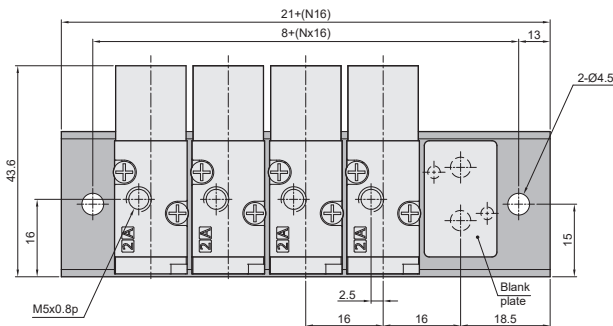
PMU 510M5 - □

3 port 2-position single



PMU 5000 series - standard

Manifold dimension



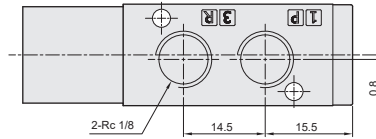
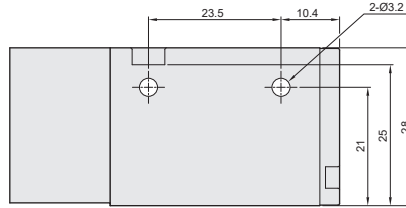
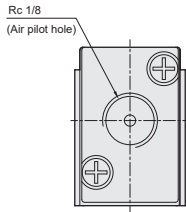
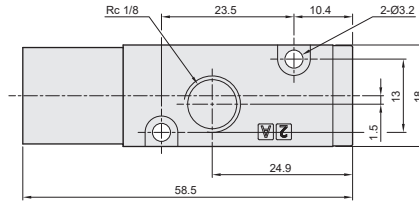
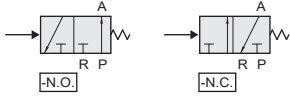
PMU 7000 series Air Operated Valve

Dimensions/ Standard

CHELIC

PMU 7101 - □

3 port 2-position single



PM

PMB

PMU

PMUB

PV

PN

PMU 7000 series - standard

Manifold dimension

