

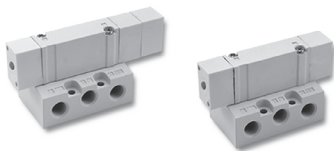
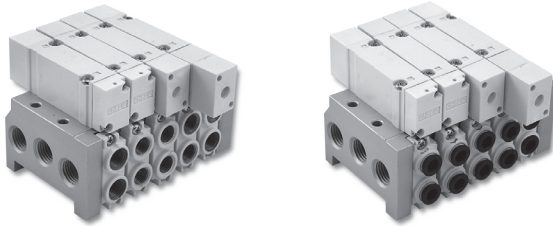
# Directional control – PMB Air Operated Valve

PMB3000, PMB5000, PMB7000, PMB9000 Air operated valve

**CHELIC**



Provide CAD external dimension.



Small size, big flow rate!  
Air hole can be changed and be added connector.

PM

PMB

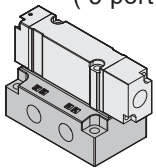
PMU

PMUB

PV

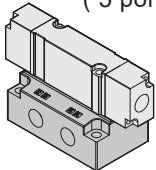
PN

**Single air pilot valve**  
( 5 port 2-position )



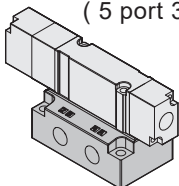
<b>PMB - 3000 series</b>	-- M5	-----	<b>P.2-3.28</b>
<b>PMB - 5000 series</b>	-- Rc1/8, Ø4, Ø6, Ø8	-----	<b>P.2-3.30</b>
<b>PMB - 7000 series</b>	-- Rc1/8, 1/4, Ø6, Ø8, Ø10	-----	<b>P.2-3.33</b>
<b>PMB - 9000 series</b>	-- Rc3/8	-----	<b>P.2-3.36</b>

**Double air pilot valve**  
( 5 port 2-position )



<b>PMB - 3000 series</b>	-- M5	-----	<b>P.2-3.28</b>
<b>PMB - 5000 series</b>	-- Rc1/8, Ø4, Ø6, Ø8	-----	<b>P.2-3.30</b>
<b>PMB - 7000 series</b>	-- Rc1/8, 1/4, Ø6, Ø8, Ø10	-----	<b>P.2-3.33</b>
<b>PMB - 9000 series</b>	-- Rc3/8	-----	<b>P.2-3.36</b>

**Double air pilot valve**  
( 5 port 3-position )



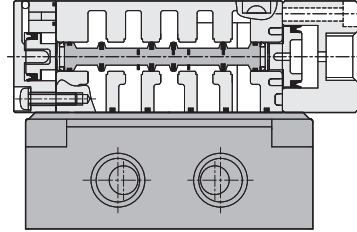
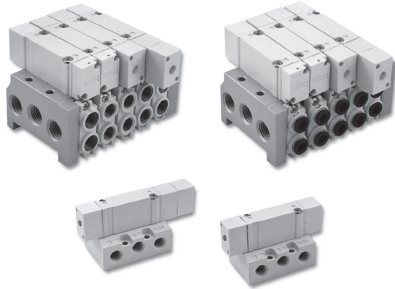
<b>PMB - 3000 series</b>	-- M5	-----	<b>P.2-3.29</b>
<b>PMB - 5000 series</b>	-- Rc1/8, Ø4, Ø6, Ø8	-----	<b>P.2-3.31</b>
<b>PMB - 7000 series</b>	-- Rc1/8, 1/4, Ø6, Ø8, Ø10	-----	<b>P.2-3.34</b>
<b>PMB - 9000 series</b>	-- Rc3/8	-----	<b>P.2.3.37</b>

# PMB series Air Operated Valve ( Base Mounting Type with One-Touch Fitting )

Product features/ Code of order

**CHELIC**

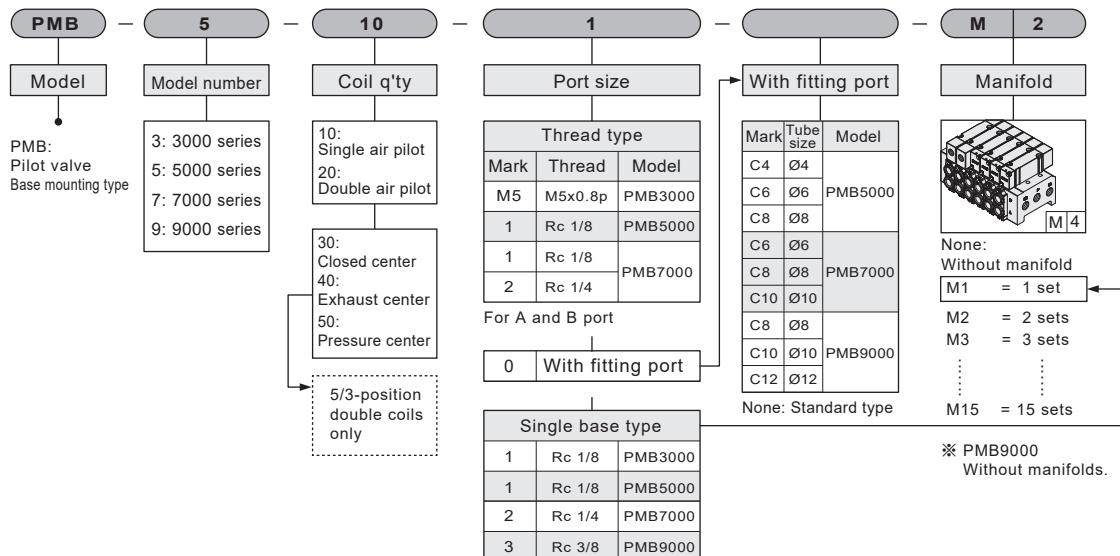
## Internal structure



## Specification

Item	Model	PMB3000	PMB5000	PMB5000	PM5000
Fluid		Air			
Pressure range	kgf/cm <sup>2</sup> (kPa)	0 ~ 7 ( 0 ~ 700 )			
Pilot pressure range	kgf/cm <sup>2</sup> (kPa)	1.5 ~ 7 ( 150 ~ 700 )			
Ambient and fluid temperature	°C	5 ~ 60			
Pilot type		Air operated			
Number of positions		5/2-position, 5/3-position			
Type of actuation		Normally closed			
Effective orifice	mm <sup>2</sup> (CV)	3.6 (0.2)	10.8(0.6)	18.2(1.0)	36(2.0)
Port size		M5, Rc 1/8, Ø4, Ø6, Ø8		Rc1/8, Rc 1/4, Ø6, Ø8, Ø10	Rc 3/8
Lubrication		Lubrication free type			

## Code of order

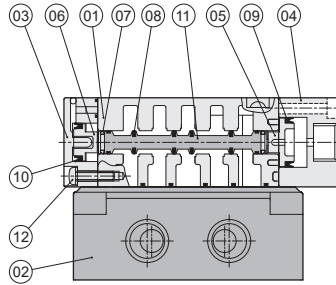
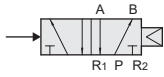


# PMB series Air Operated Valve ( Base Mounting Type with One-Touch Fitting )

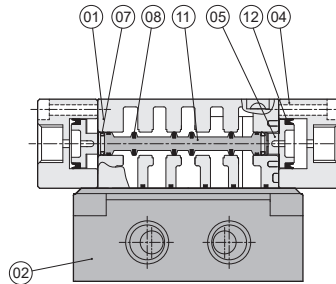
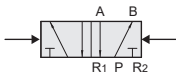
## Product features

**CHELIC**

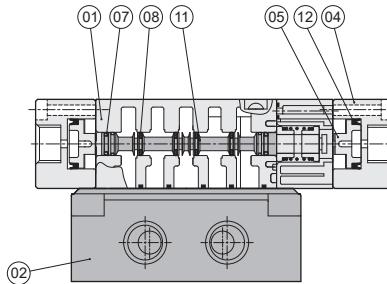
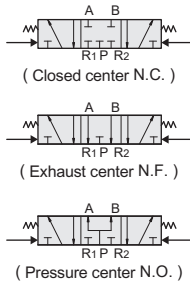
### ● 5 port 2-position single



### ● 5 port 2-position double



### ● 5 port 3-position double



PM

PMB

PMU

PMUB

PV

PN

## 🔍 Components and Material list

No.	Item	Material	No.	Item	Material
01	Body	Aluminum alloy	07	Spool packing	NBR
02	Single sub-plate	Aluminum alloy	08	Spool packing	NBR
03	Rear cover	Resin	09	Holder piston packing	NBR
04	Air pilot holder	Aluminum alloy	10	Rear cover packing	NBR
05	Holder piston	POM	11	Shaft	Aluminum alloy
06	Rear cover piston	POM	12	Rear screw	Alloy steel

🔍 Note: The main body has been treated with painting.

## 🔍 Packing and O-Ring material list

Item	Holder piston packing	Rear cover packing
Model	1	1
PMB 5000	MYA-10	MYA-7
PMB 7000	MYA-11	MYA-7

🔍 Note: Piston packing and rod packing all adopt import parts ( MITSUBISHI, SAKAGAH, and same grade ).

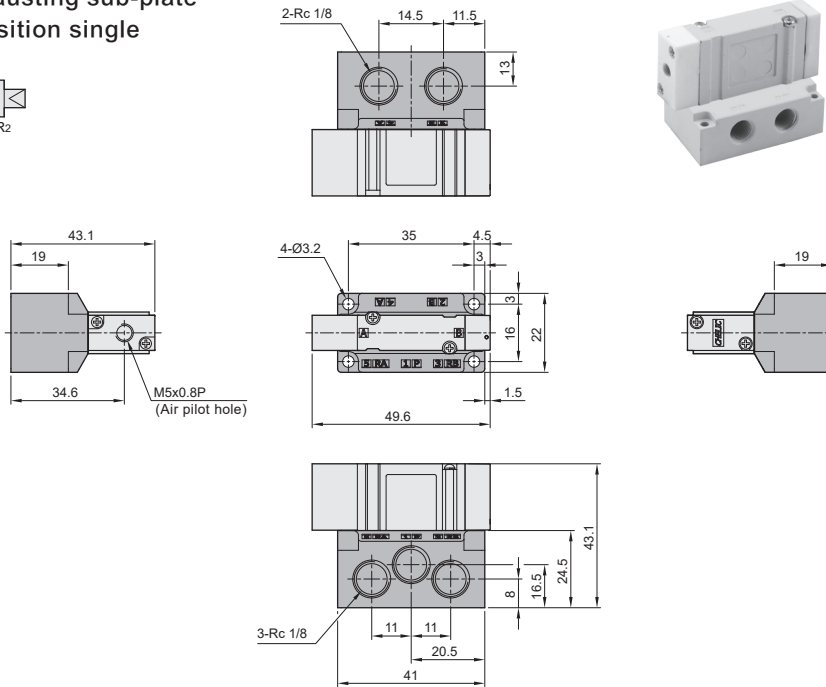
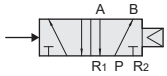
# PMB 3000 series Air Operated Valve ( Base Mounting Type with One-Touch Fitting )

Dimensions/ Standard

**CHELIC**

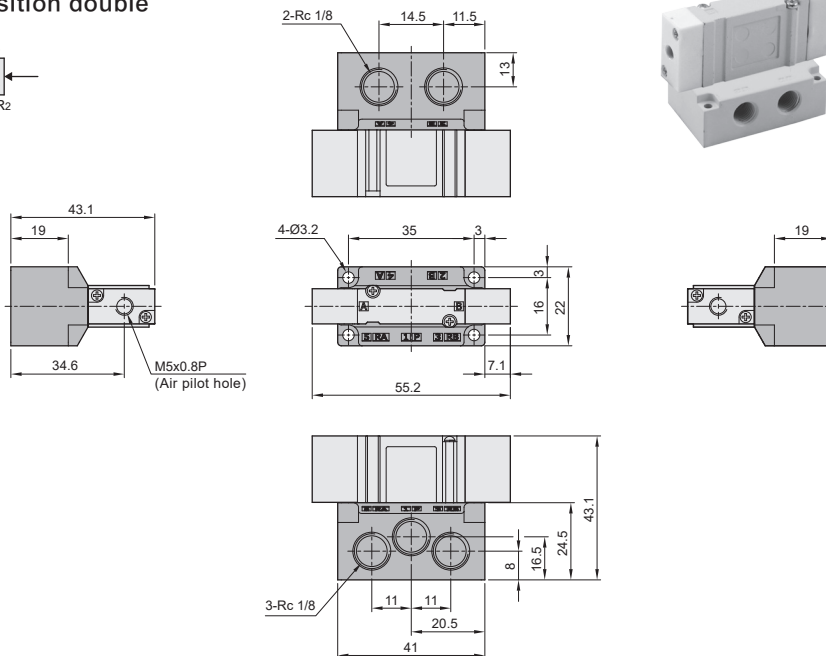
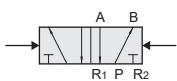
## ▶ PMB 3101

Single exhausting sub-plate  
5 port 2-position single



## ▶ PMB 3201

Single exhausting sub-plate  
5 port 2-position double



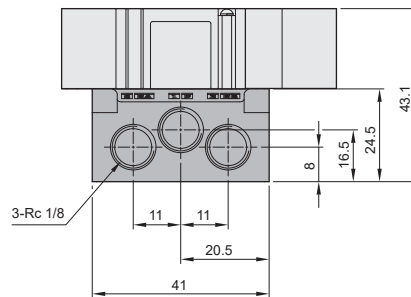
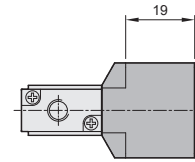
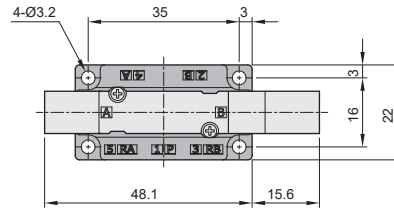
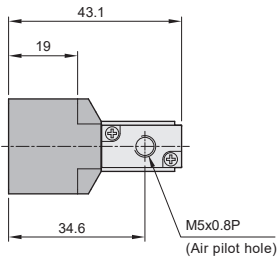
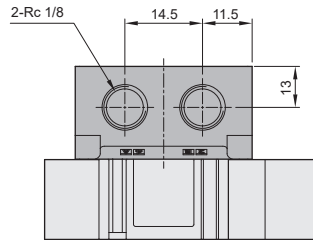
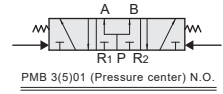
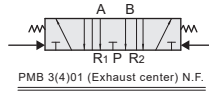
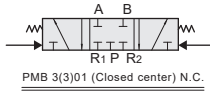
# PMB 3000 series Air Operated Valve ( Base Mounting Type with One-Touch Fitting )

Dimensions/ Standard

**CHELIC**

- PMB 3(3)01
- PMB 3(4)01
- PMB 3(5)01

Single exhausting sub-plate  
5 port 3-position double



PM

PMB

PMU

PMUB

PV

PN

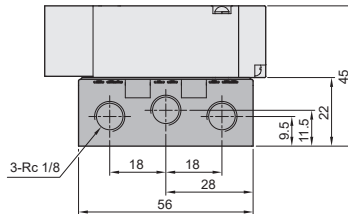
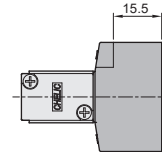
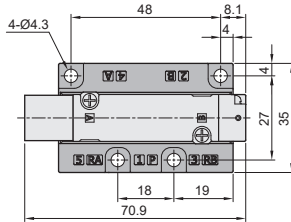
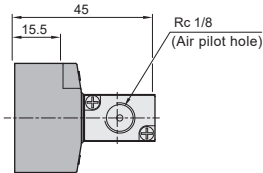
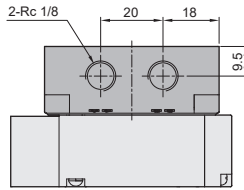
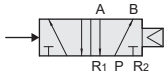
# PMB 5000 series Air Operated Valve (Base Mounting Type with One-Touch Fitting)

Dimensions/ Standard

**CHELIC**

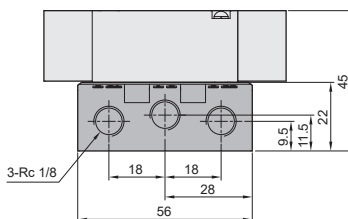
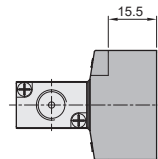
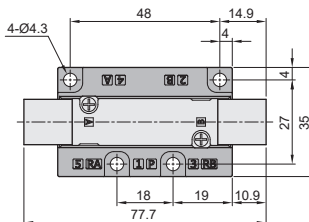
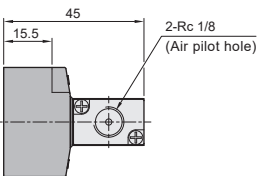
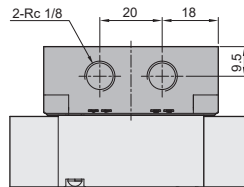
## ▶ PMB 5101

Single exhausting sub-plate  
5 port 2-position single



## ▶ PMB 5201

Single exhausting sub-plate  
5 port 2-position double



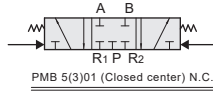
# PMB 5000 series Air Operated Valve ( Base Mounting Type with One-Touch Fitting )

Dimensions/ Standard

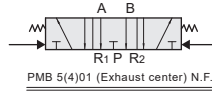
**CHELIC**

- PMB 5(3)01
- PMB 5(4)01
- PMB 5(5)01

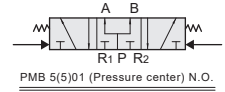
Single exhausting sub-plate  
5 port 3-position double



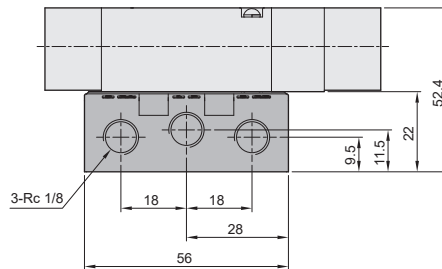
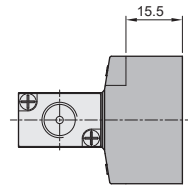
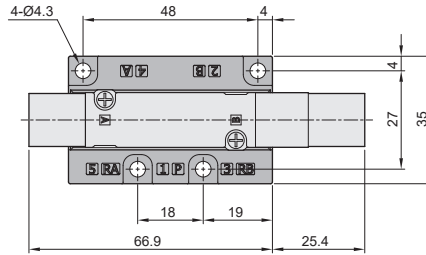
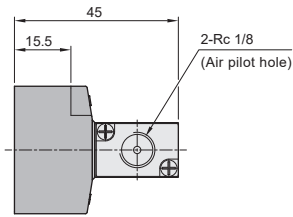
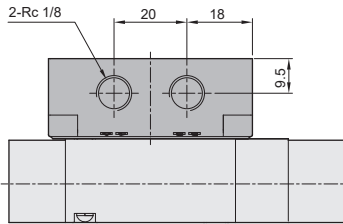
PMB 5(3)01 (Closed center) N.C.



PMB 5(4)01 (Exhaust center) N.F.



PMB 5(5)01 (Pressure center) N.O.



PM

PMB

PMU

PMUB

PV

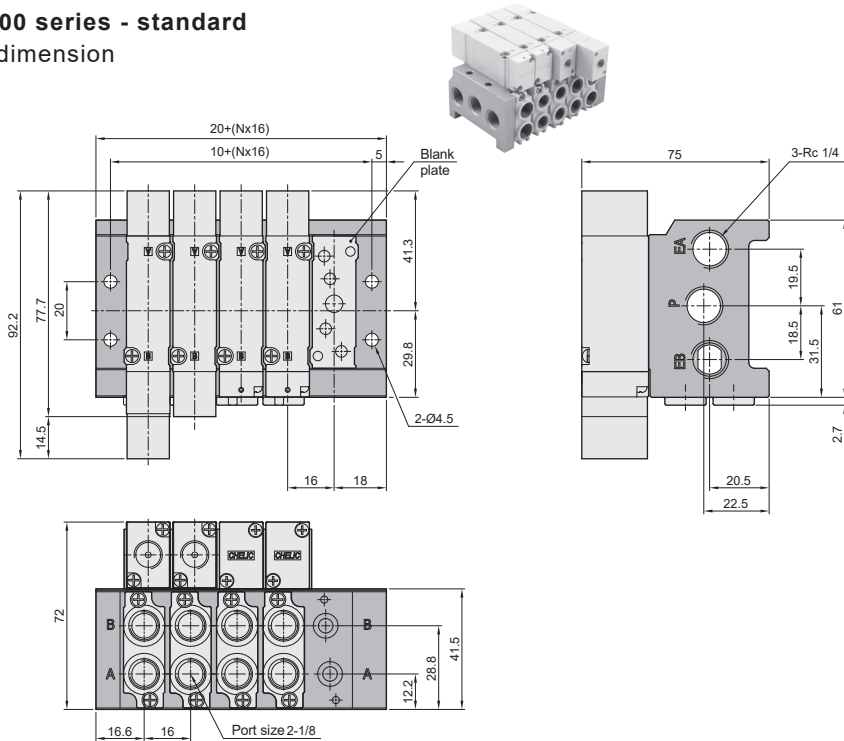
PN

# PMB 5000 series Air Operated Valve ( Base Mounting Type with One-Touch Fitting )

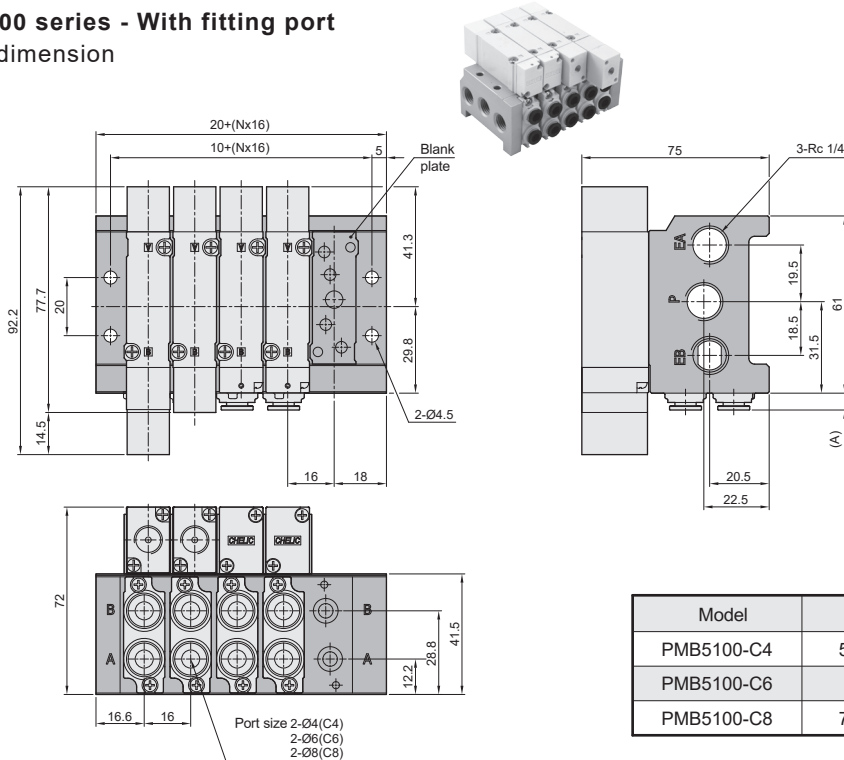
## Dimensions/ Manifold type

**CHELIC**

### PMB - 5000 series - standard Manifold dimension



### PMB - 5000 series - With fitting port Manifold dimension





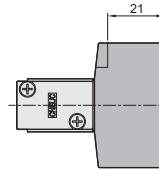
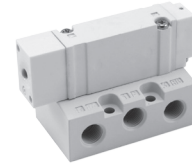
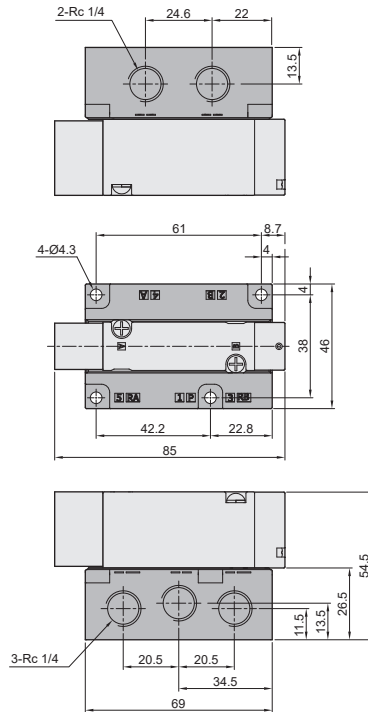
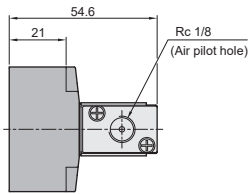
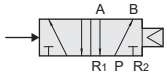
# PMB 7000 series Air Operated Valve ( Base Mounting Type with One-Touch Fitting )

Dimensions/ Standard

**CHELIC**

## PMB 7102

Single exhausting sub-plate  
5 port 2-position single



PM

PMB

PMU

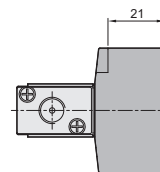
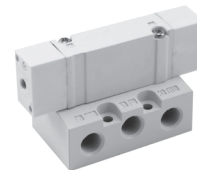
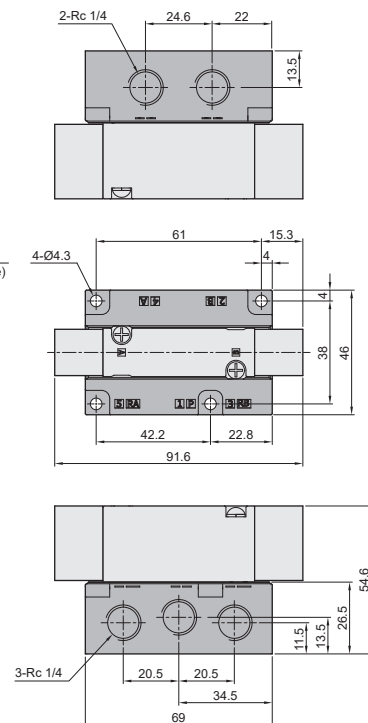
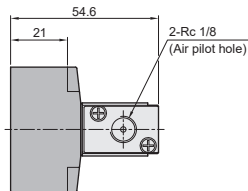
PMUB

PV

PN

## PMB 7202

Single exhausting sub-plate  
5 port 2-position double



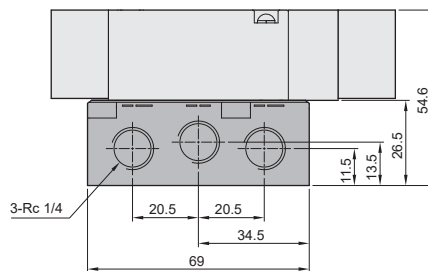
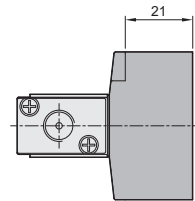
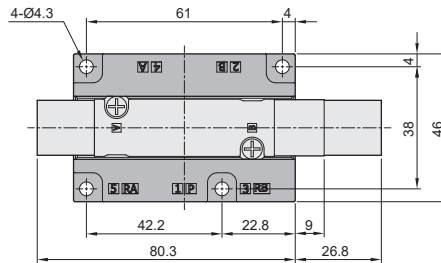
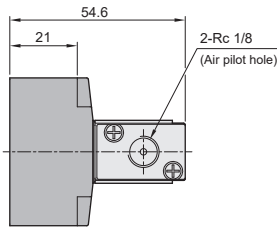
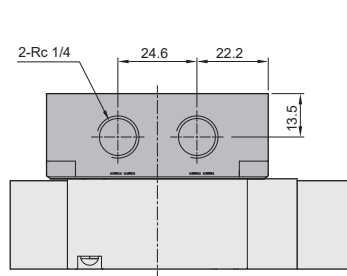
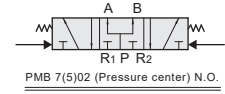
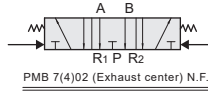
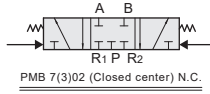
# PMB 7000 series Air Operated Valve ( Base Mounting Type with One-Touch Fitting )

Dimensions/ Standard

**CHELIC**

- PMB 7(3)02
- PMB 7(4)02
- PMB 7(5)02

Single exhausting sub-plate  
5 port 3-position double

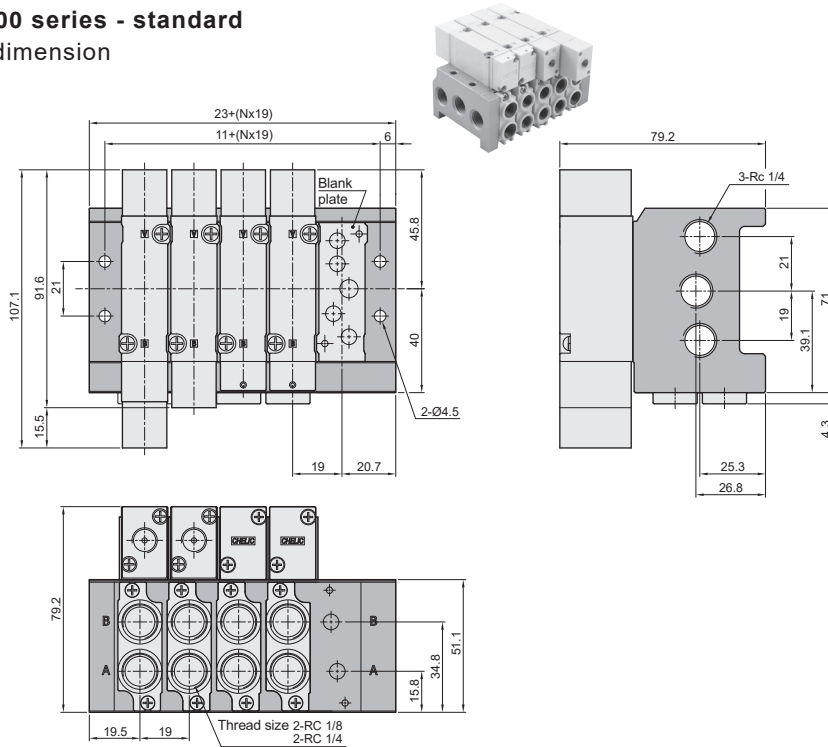


# PMB 7000 series Air Operated Valve ( Base Mounting Type with One-Touch Fitting )

## Dimensions/ Manifold type

**CHELIC**

### PMB - 7000 series - standard Manifold dimension



PM

PMB

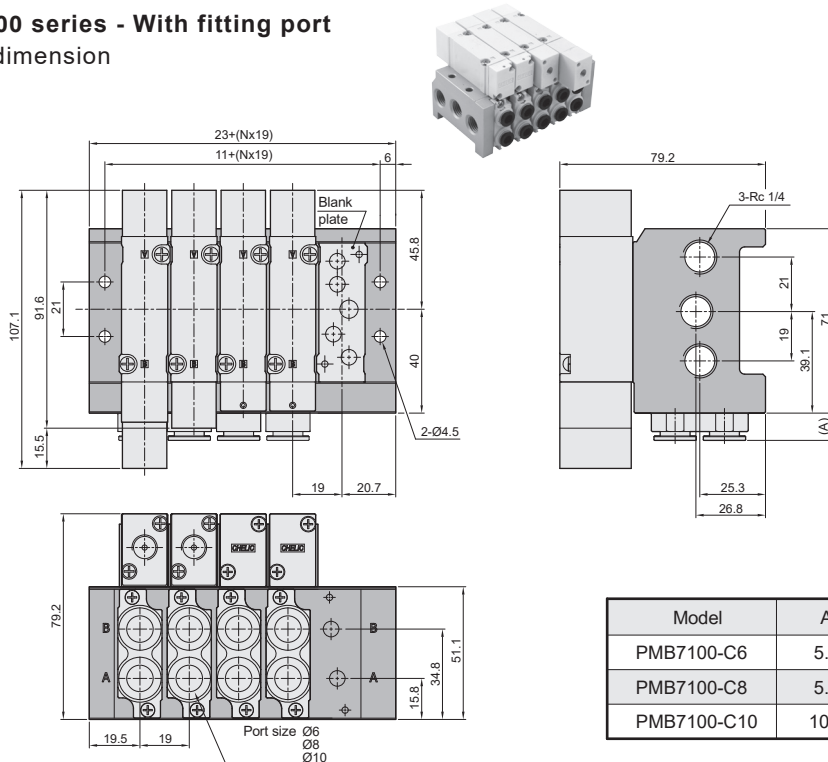
PMU

PMUB

PV

PN

### PMB - 7000 series - With fitting port Manifold dimension



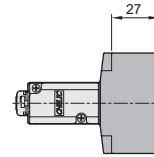
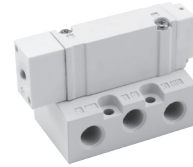
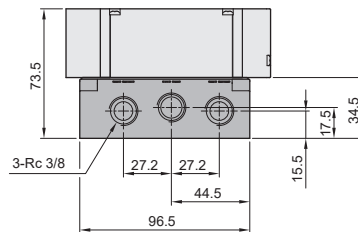
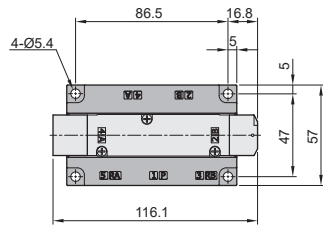
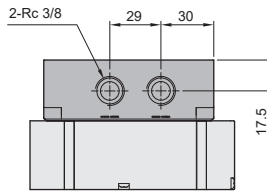
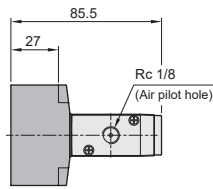
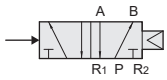
# PMB 9000 series Air Operated Valve (Base Mounting Type with One-Touch Fitting)

Dimensions/ Standard

**CHELIC**

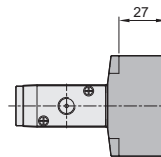
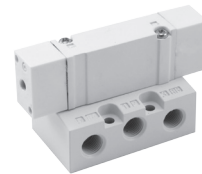
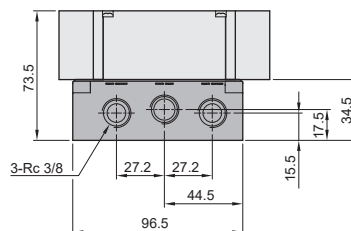
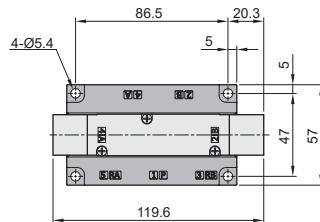
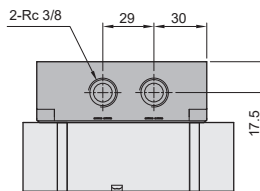
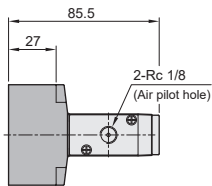
## ▶ PMB 9103

Single exhausting sub-plate  
5 port 2-position single



## ▶ PMB 9203

Single exhausting sub-plate  
5 port 2-position double



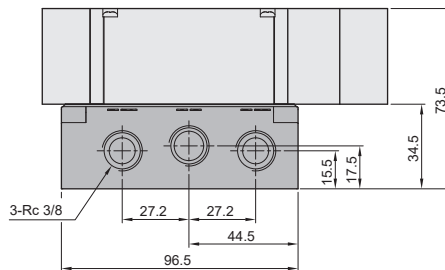
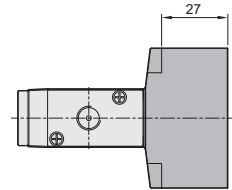
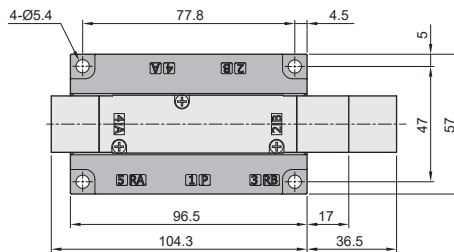
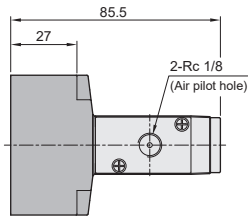
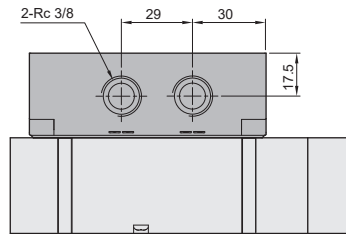
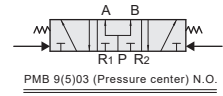
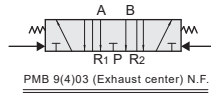
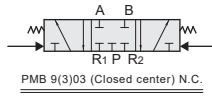
# PMB 9000 series Air Operated Valve ( Base Mounting Type with One-Touch Fitting )

Dimensions/ Standard

**CHELIC**

- PMB 9(3)03
- PMB 9(4)03
- PMB 9(5)03

Single exhausting sub-plate  
5 port 3-position double



PM

PMB

PMU

PMUB

PV

PN