

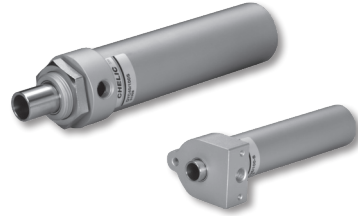
DYC series Vacuum Cylinder

Product features/ Code of order

CHELIC

Feature

- The vacuum pump and pad can directly extended and suck workpiece without cylinder.
- Vacuum braker included to release the workpiece.



Specification

Item	Bore size(mm)	Ø25	Ø40
Operation		Single acting	
Fluid		Air	
Stroke	mm	25, 50, 75, 100, 125, 150, 200, 300	
Setting range	mmHg	-600	

Note: 1. High air consumption need to used with vacuum pump.
2. Customized product, MOQ should be 10pcs.

Code of Order **DYC 25 x 150 - SA 2**

1 — 2 — 3 — 4

1

Mark	Bore size(mm)
25	Ø25
40	Ø40

2

Bore size(mm)	Stroke (mm)
Ø25	25、50、75、100、125、150
Ø40	100、150、200

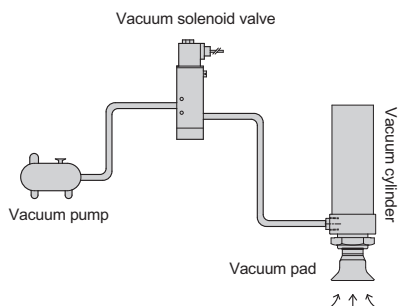
3

Mark	Sensor switch
None	Without sensor switch
SA	CS-100
Image	
CS-100	

4

Mark	Sensor quantity
1	1 sensor
2	1 sensors

Application instruction



Internal structure



