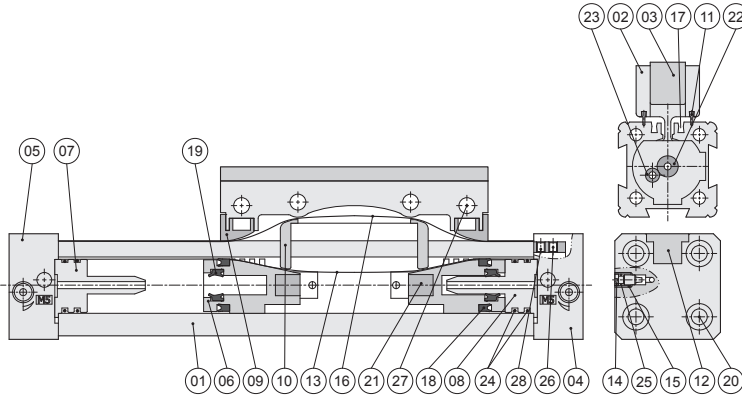


PRU(F)2 series Mechanically Jointed Rodless Cylinder

Product feature

CHELIC

Internal structure



Product weight

Unit: kg

Bore size (mm)	Stroke = 0mm	Additional weight
Ø16	0.25	0.1
Ø20	0.47	0.15
Ø25	0.74	0.197
Ø32	1.62	0.354
Ø40	2.10	0.415
Ø50	4.28	0.660

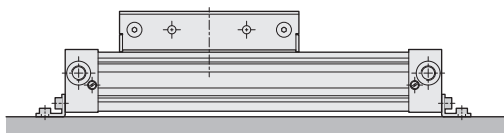
Note: Additional weight per each 100 mm in $\pm 5\%$ difference

Components and material list

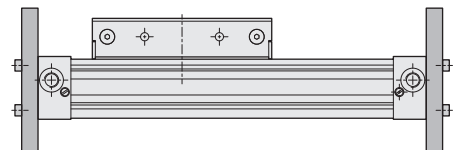
NO.	Item	Material	NO.	Item	Material
01	Body	Aluminum alloy	15	Bush	Stainless steel
02	Slider	Aluminum alloy	16	Outer belt	Stainless steel
03	Slider cap	Aluminum alloy	17	Magnet belt	Rare earth metal
04	Left end cap	Aluminum alloy	18	Piston packing	NBR
05	Right end cap	Aluminum alloy	19	Air cushion packing	NBR
06	Piston	POM	20	End cap screw	Carbon steel
07	Air cushion lever (left)	POM	21	Piston magnet	Rare earth metal
08	Air cushion lever (right)	POM	22	End cap O-ring	NBR
09	Outer belt block	POM	23	Air cushion lever O-ring_1	NBR
10	Belt guide block	POM	24	Air cushion lever O-ring_2	NBR
11	Slider plate	NBR	25	Air cushion pin O-ring	NBR
12	Cover	POM	26	Cap screw	Carbon steel
13	Inner belt	PU	27	Slider plate screw	Carbon steel
14	Air cushion pin	Copper Alloy	28	Inner belt screw	Carbon steel

Mounting type

● Mounting bracket type



● End bracket type



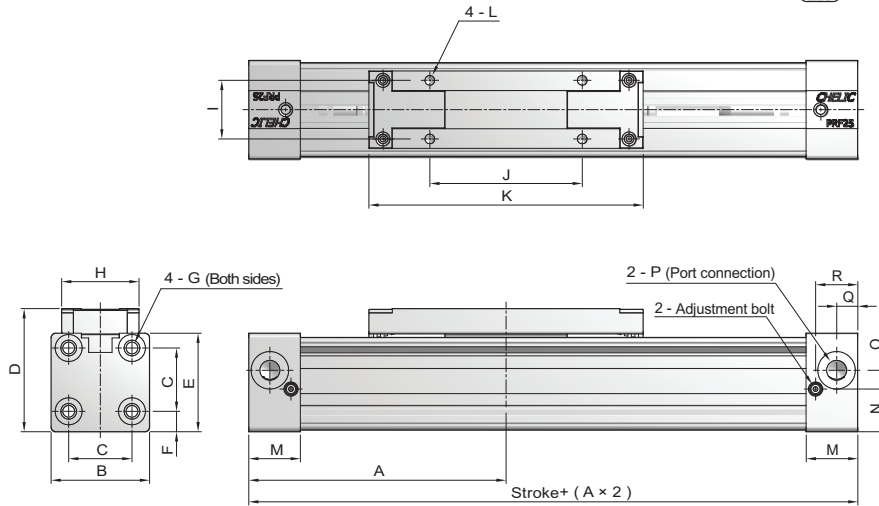
Note: It has thread hole in the mounting screw of cover to use, do not take out this screw.

PRF2 series Mechanically Jointed Rodless Cylinder (Plate type)

Dimensions

CHELIC

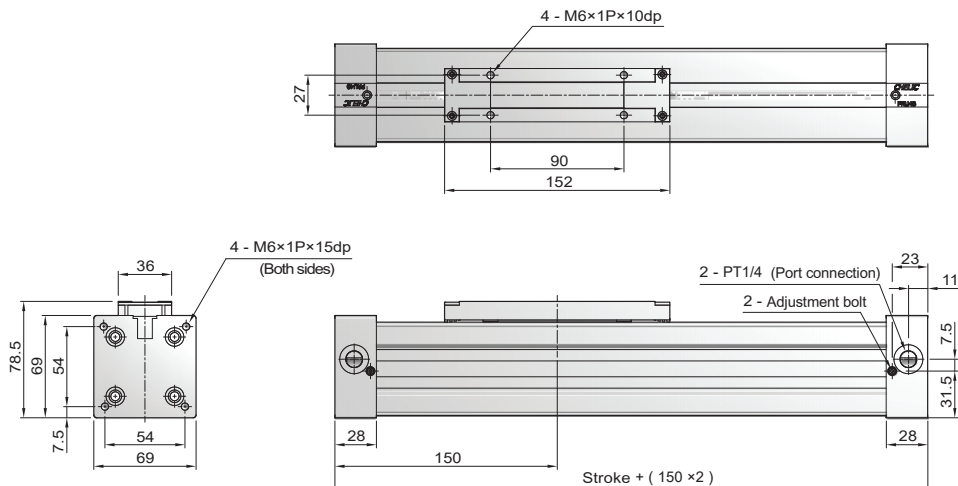
PRF2 Ø16 ~ Ø32



Unit: mm

Mark	A	B	C	C2	D	E	F	G	H	I	J	K	L	M	N	O	P	Q	R
Ø16	65	30	18	18	38	30	6.4	M3x0.5Px9dp	22	16.5	36	69	M4x0.7Px6dp	14	13.4	3.5	M5x0.8p	5	10
Ø20	80	37	24	24	46	37	6	M4x0.7Px12dp	28	20	50	90	M4x0.7Px6dp	22	17	5	PT1/8	9	18
Ø25	100	42	27	27	52.5	42	8.7	M5x0.8Px15dp	33	25	65	117	M5x0.8Px8dp	22	18.2	8	PT1/8	9	18
Ø32	125	54	36	36	66.5	55	9.5	M6x1Px15dp	36	27	90	152	M6x1Px10dp	25.5	24	9	PT1/4	11	21

PRF2 Ø40



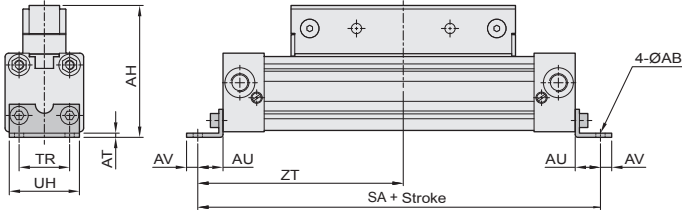
PRU(F)2 series Mechanically Jointed Rodless Cylinder

Accessory

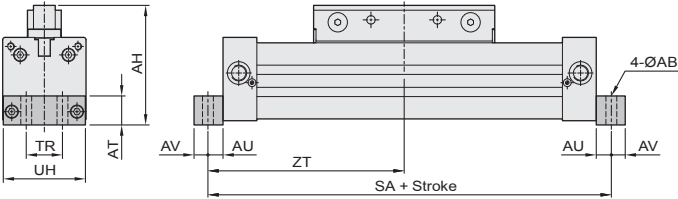
CHELIC

L series Mounting bracket (PRU)

● PRU Ø 16 ~ Ø 32



● PRU Ø 40

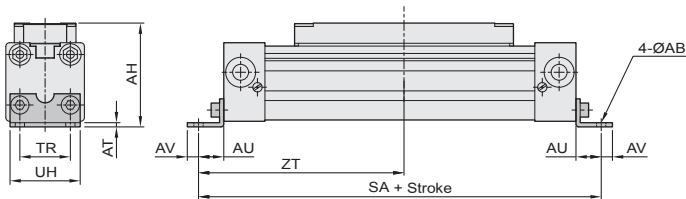


Unit: mm

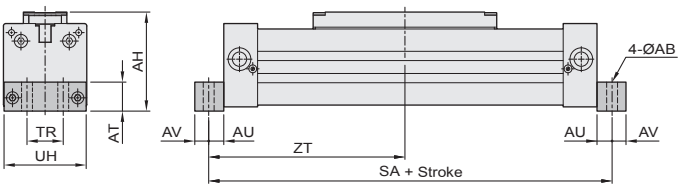
Mark Bore size	AB	AH	AT	AU	AV	SA	TR	UH	ZT
Ø16	3.6	45	1.6	10	4	150	18	26	75
Ø20	4.6	56	1.6	11	5	182	24	35	91
Ø25	5.8	68	2.5	16	6	232	27	39	116
Ø32	6.6	89.8	3	18	8	286	36	50	143
Ø40	9	99	24	12.5	11.5	325	30	68	162.5

L series Mounting bracket (PRF)

● PRF Ø 10 ~ Ø 32



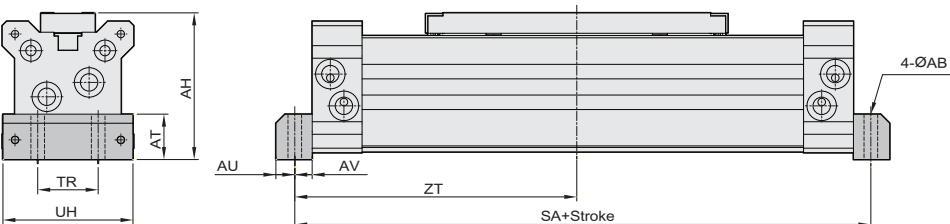
● PRF Ø 40



Unit: mm

Mark Bore size	AB	AH	AT	AU	AV	SA	TR	UH	ZT
Ø16	3.6	38	1.6	10	4	150	18	26	75
Ø20	4.6	47	1.6	11	5	182	24	35	91
Ø25	5.8	53	2.5	16	6	232	27	39	116
Ø32	6.6	68	3	18	8	286	36	50	143
Ø40	9	82	24	12.5	11.5	325	30	68	162.5
Ø50	9	97	30	12.5	11.5	373	40	86	186.5

● PRF Ø 50



PRE

PRET(P)

PRU(F)2

PRUT2

MRD

MRB

MRBT

MRX

MRU

MRH

MRY

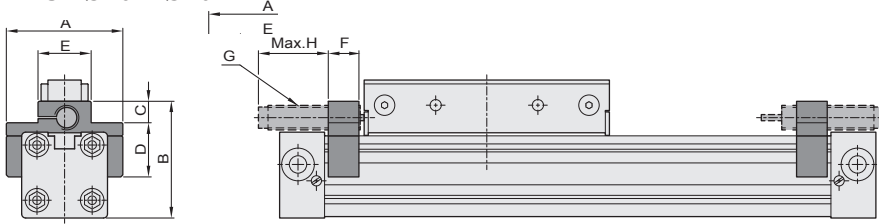
PRU(F)2 series Mechanically Jointed Rodless Cylinder

Accessory

CHELIC

Cushion

● PRU2 Ø16 ~ Ø40



Unit: mm

Mark	A	B	C	D	E	F	G	H
Ø16	43	44.5	10.5	19.6	24	10	M10×1.0P	37
Ø20	52	53.2	11.8	24.6	27	10	M10×1.0P	37
Ø25	57	64.7	17.5	27	30	15	M12×1.0P	37.5
Ø32	69	79.2	19.5	34	31	15	M14×1.5P	52
Ø40	80	91.4	18.9	38.5	38	20	M20×1.5P	52

Operating range

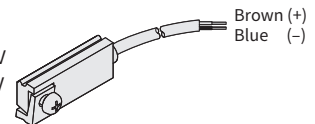
Unit: mm

Model	CS - 95	
Bore size	Operating range(F)	Hysteresis(R)
Ø16	10	1
Ø20	9	1.2
Ø25	9	1.2
Ø32	13	1.2
Ø40	10.5	1.5

▶ Sensor switch introduction

CS-95

Voltage: DC 5 ~ 120V
AC 5 ~ 120V



PRE

PRET(P)

PRU(F)2

PRUT2

MRD

MRB

MRBT

MRX

MRU

MRH

MRY